

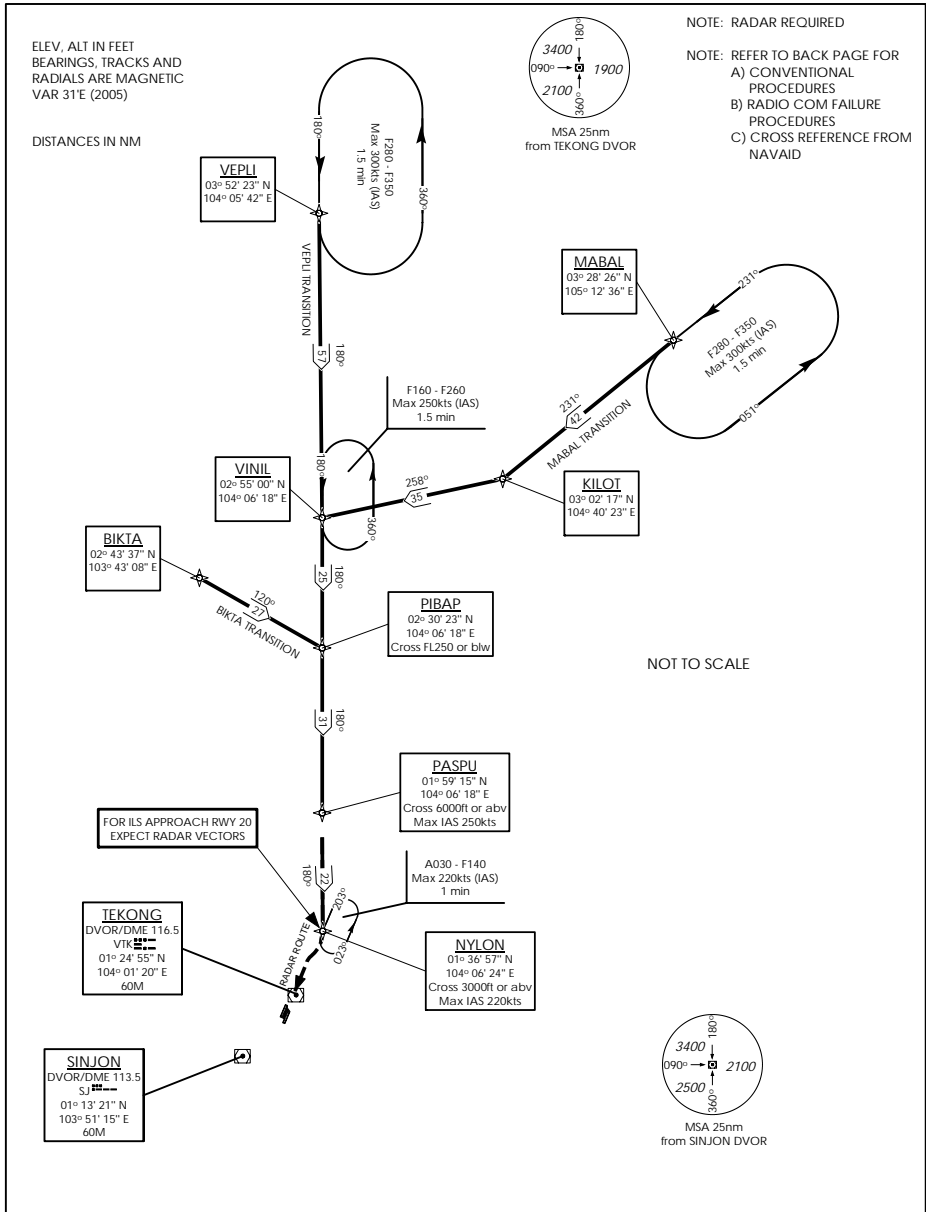
STANDARD ARRIVAL CHART -  
INSTRUMENT (STAR)

ACC 133.8 / 127.3  
APP 124.05 / 120.3  
ARR 119.3  
TWR 118.6 / 118.25

TRANSITION ALTITUDE  
11 000ft

D-ATIS AP ID-WSSS  
128.6

SINGAPORE/Singapore Changi  
RWY 20R/C  
PASPU ONE BRAVO ARRIVAL  
PASPU 1B  
RNAV(GNSS)



→ (A) BASIC RNAV ARRIVAL

For non-RNP1/P-RNAV approved aircraft or whose RNP1/P-RNAV capability have been degraded

TRANSITIONS/ROUTE	PASPU ONE BRAVO ARRIVAL (PASPU 1B)
<p>BIKTA (M751/B469): FROM <u>BIKTA TO PASPU</u> AT BIKTA TRACK 120° TO PIBAP THEN TURN RIGHT AND TRACK 180° TO PASPU. CROSS PIBAP AT OR BELOW FL250. CROSS PASPU AT OR ABOVE 6 000FT AT MAX IAS 250KTS. THEN FOLLOW THE APPROPRIATE PASPU ARRIVAL.</p>	<p>AT PASPU TRACK 180° TO NYLON. CROSS NYLON AT OR ABOVE 3 000FT AT MAX IAS 220KTS, OR AS DIRECTED BY ATC. FROM NYLON, EXPECT RADAR VECTORS FOR ILS APPROACH RUNWAY 20.</p>
<p>VEPLI(L642): FROM <u>VEPLI TO PASPU</u> AT VEPLI TRACK 180° TO PIBAP THEN TO PASPU. CROSS PIBAP AT OR BELOW FL250. CROSS PASPU AT OR ABOVE 6 000FT AT MAX IAS 250KTS. THEN FOLLOW THE APPROPRIATE PASPU ARRIVAL.</p>	
<p>MABAL(N892): FROM <u>MABAL TO PASPU</u> AT MABAL TRACK 231° TO KILOT THEN TURN RIGHT TO TRACK 258° TO VINIL. AT VINIL TURN LEFT TRACK 180° TO PIBAP THEN TO PASPU. CROSS PIBAP AT OR BELOW FL250. CROSS PASPU AT OR ABOVE 6 000FT AT MAX IAS 250KTS. THEN FOLLOW THE APPROPRIATE PASPU ARRIVAL.</p>	

(B) RADIO COMMUNICATIONS FAILURE PROCEDURE

1	SET TRANSPONDER TO MODE A/C CODE 7600
2	<p>When cleared via PASPU 1B by Singapore ATC</p> <p>(a) Maintain last assigned flight level or altitude and proceed on PASPU 1B to NYLON.</p> <p>(b) From NYLON commence descent and carry out appropriate landing procedure for RWY 20 as close as possible to EAT or ETA</p> <p>(c) If unable to effect a landing, refer to Singapore AIP for missed approach procedure</p>
3	<p>No clearance or instruction received from Singapore ATC</p> <p>- refer to Singapore AIP for radio communications failure procedure</p>

(C) RADIAL AND DME FROM VOR/DME

WAY POINTS	VTK VOR/DME	SJ VOR/DME
BIKTA	VTK R-346.9/D80.4	SJ R-355.0/D90.2
KILOT	VTK R-022.0/D104.5	SJ R-024.4/D119.0
MABAL	VTK R-030.1/D142.1	SJ R-031.2/D157.2
NYLON	VTK R-023.0/D13.0	SJ R-032.9/D30.0
PASPU	VTK R-008.3/D34.5	SJ R-018.3/D48.1
PIBAP	VTK R-004.4/D65.3	SJ R-011.1/D78.1
VEPLI	VTK R-001.7/D146.8	SJ R-005.2/D158.9
VINIL	VTK R-003.2/D89.8	SJ R-008.5/D102.3