

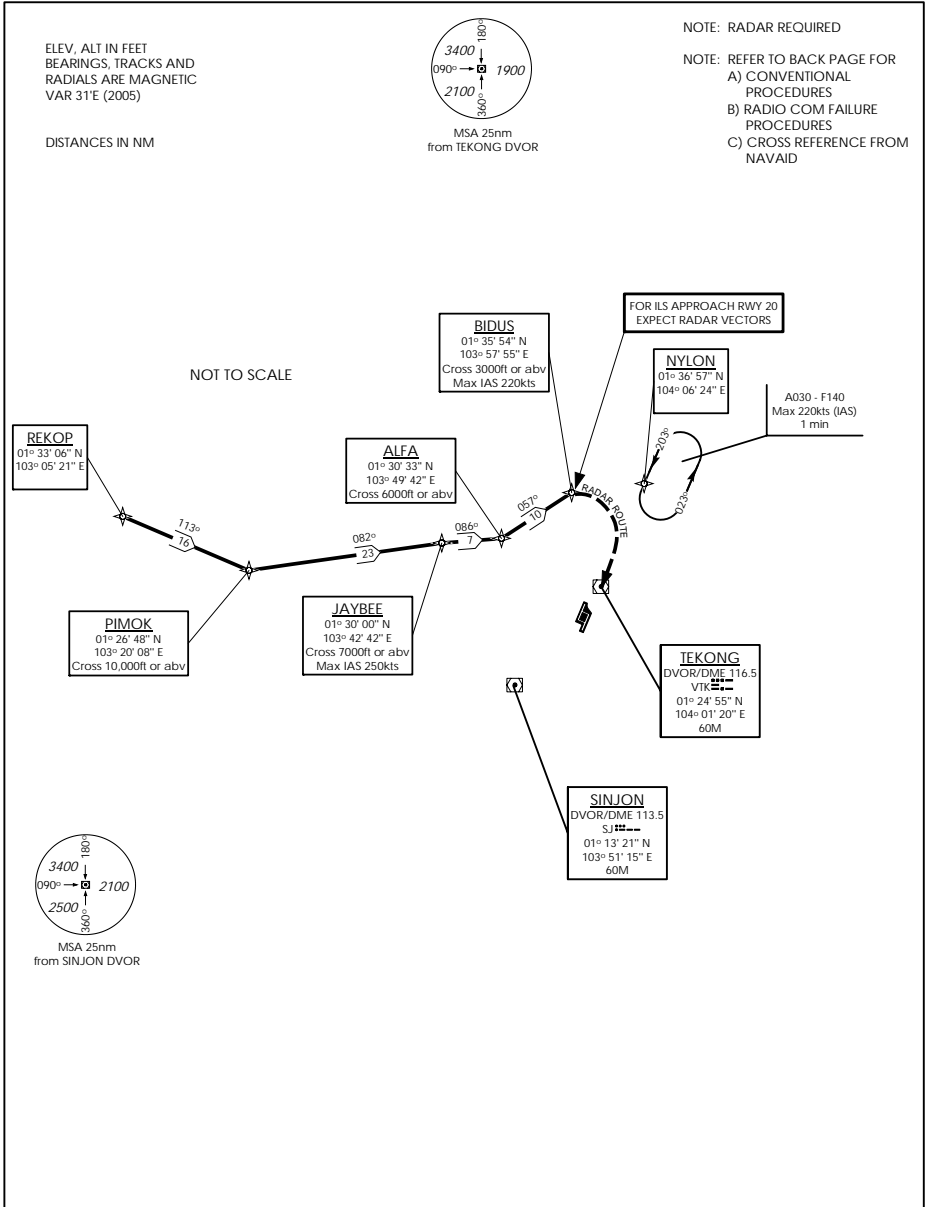
STANDARD ARRIVAL CHART -
INSTRUMENT (STAR)

ACC 133.25
APP 124.05 / 120.3
ARR 119.3
TWR 118.6 / 118.25

TRANSITION ALTITUDE
11 000ft

D-ATIS AP ID-WSSS
128.6

SINGAPORE/Singapore Changi
RWY 20R/C
PIMOK TWO BRAVO ARRIVAL
PIMOK 2B
RNAV_(GNSS)



→ (A) BASIC RNAV ARRIVAL

For non-RNP1/P-RNAV approved aircraft or whose RNP1/P-RNAV capability have been degraded

TRANSITIONS/ROUTE	PIMOK TWO BRAVO ARRIVAL (PIMOK 2B)
A576	AT PIMOK, TURN LEFT AND TRACK 082° TO JB (JAYBEE) NDB. CROSS PIMOK AT OR ABOVE 10 000FT. CROSS JB (JAYBEE) NDB AT OR ABOVE 7 000FT AT MAX IAS 250KTS. FROM JB (JAYBEE) NDB TRACK 086° TO ALFA. AT ALFA, TURN LEFT AND TRACK 057° TO BIDUS. CROSS ALFA 6 000FT OR ABOVE. CROSS BIDUS 3 000FT OR ABOVE AT MAX IAS 200KTS. FROM BIDUS, EXPECT RADAR VECTORS FOR ILS APPROACH RWY 20.

(B) RADIO COMMUNICATIONS FAILURE PROCEDURE

1	SET TRANSPONDER TO MODE A/C CODE 7600
2	When cleared via PIMOK 2B by Singapore ATC (a) Maintain last assigned flight level or altitude and proceed on PIMOK 2B to BIDUS, then direct to NYLON. (b) From NYLON commence descent and carry out appropriate landing procedure for RWY 20 as close as possible to EAT or ETA (c) If unable to effect a landing, refer to Singapore AIP for missed approach procedure
3	No clearance or instruction received from Singapore ATC - refer to Singapore AIP for radio communications failure procedure

(C) RADIAL AND DME FROM VOR/DME

WAY POINTS	VTK VOR/DME	SJ VOR/DME
ALFA	VTK R-295.7/D12.9	SJ R-354.8/D17.2
BIDUS	VTK R-326.0/D13.2	SJ R-6.9/D22.6
JB (JAYBEE)	VTK R-285.1/D19.3	SJ R-332.6/D18.6
NYLON	VTK R-023.0/D13.0	SJ R-032.9/D30.0
PIMOK	VTK R-272.6/D41.3	SJ R-293.2/D33.9
REKOP	VTK R-278.3/D56.6	SJ R-293.1/D50.0