

STANDARD ARRIVAL CHART -
INSTRUMENT (STAR)

ACC 134.4
APP 124.05 / 120.3
ARR 119.3
TWR 118.6 / 118.25

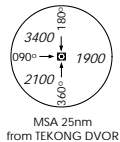
TRANSITION ALTITUDE
11 000ft

D-ATIS AP ID-WSSS
128.6

SINGAPORE/Singapore Changi
RWY 02L/C
REMES FIVE ALPHA ARRIVAL
REMES 5A
RNAV_(GNSS)

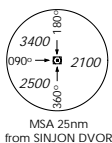
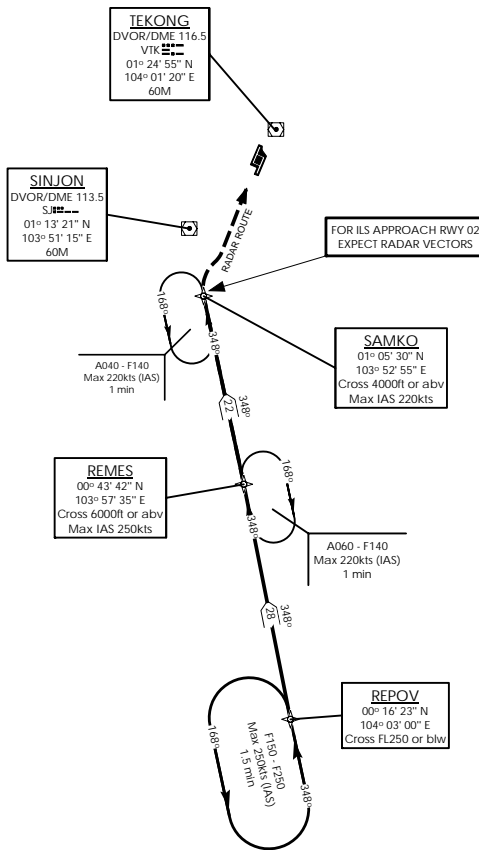
ELEV, ALT IN FEET
BEARINGS, TRACKS AND
RADIALS ARE MAGNETIC
VAR 31°E (2005)

DISTANCES IN NM



NOTE: RADAR REQUIRED

- NOTE: REFER TO BACK PAGE FOR
- A) CONVENTIONAL PROCEDURES
 - B) RADIO COM FAILURE PROCEDURES
 - C) CROSS REFERENCE FROM NAVAID



→ (A) BASIC RNAV ARRIVAL

For non-RNP1/P-RNAV approved aircraft or whose RNP1/P-RNAV capability have been degraded

TRANSITIONS/ROUTE	REMES FIVE ALPHA ARRIVAL (REMES 5A)
G579	AT PARDI TRACK 348° TO REPOV * THEN TO REMES THEN TO SAMKO. CROSS REPOV * AT OR BELOW F250. CROSS REMES AT OR ABOVE 6 000FT AT MAX IAS 250KTS. CROSS SAMKO AT OR ABOVE 4 000FT AT MAX IAS 220KTS. FROM SAMKO, EXPECT RADAR VECTORS FOR ILS APPROACH RUNWAY 02.

* REPOV IS A HOLDING POINT ON ATS ROUTE G579

(B) RADIO COMMUNICATIONS FAILURE PROCEDURE

1	SET TRANSPONDER TO MODE A/C CODE 7600
2	When cleared via REMES 5A by Singapore ATC (a) Maintain last assigned flight level or altitude and proceed on REMES 5A to SAMKO (b) From SAMKO commence descent and carry out appropriate landing procedure for RWY 02 as close as possible to EAT or ETA (c) If unable to effect a landing, refer to Singapore AIP for missed approach procedure
3	No clearance or instruction received from Singapore ATC - refer to Singapore AIP for radio communications failure procedure

(C) RADIAL AND DME FROM VOR/DME

WAY POINTS	VTK VOR/DME	SJ VOR/DME
REMES	VTK R-185.2/D41.2	SJ R-167.9/D30.2
REPOV	VTK R-178.6/D68.2	SJ R-168.3/D57.9
SAMKO	VTK R-203.5/D21.1	SJ R-168.0/D8.0