

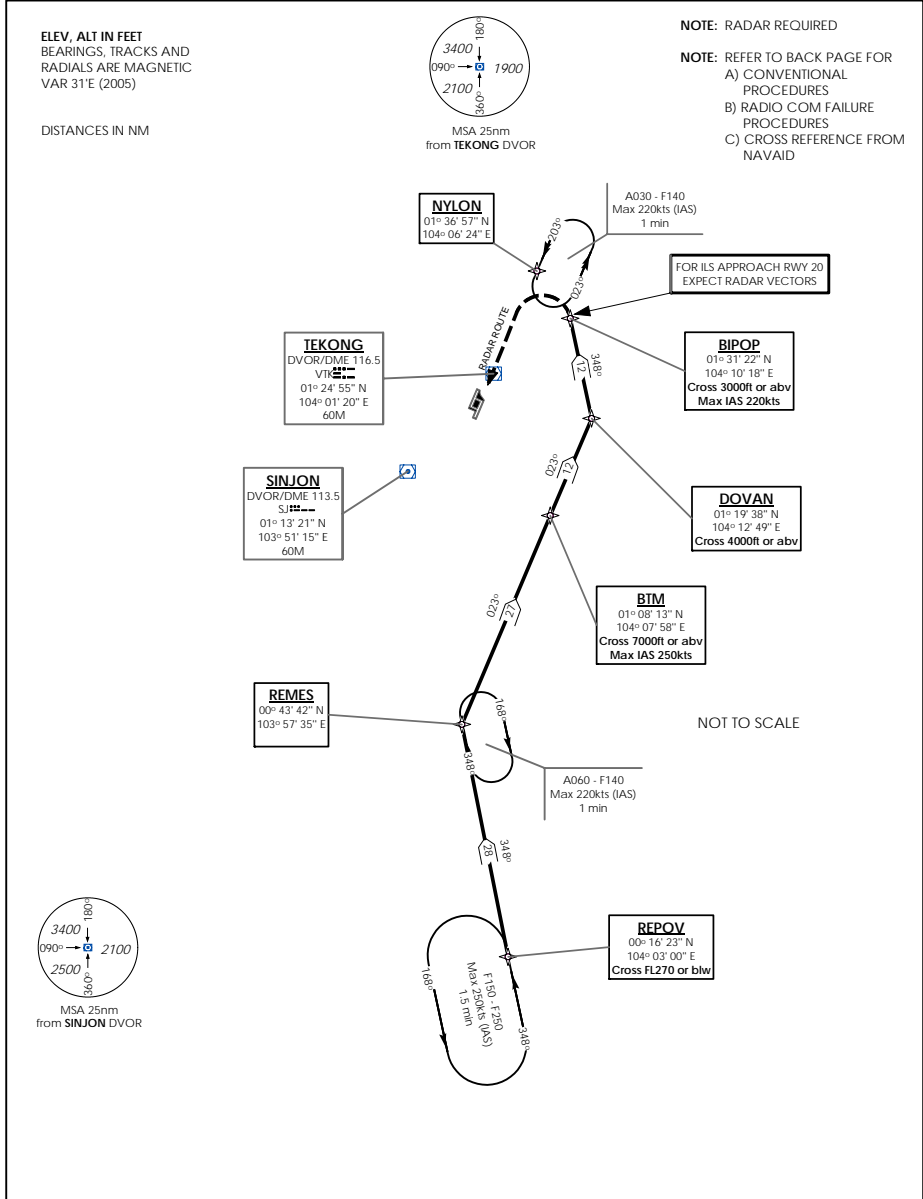
**STANDARD ARRIVAL CHART -
INSTRUMENT (STAR)**

ACC 134.4
APP 124.05 / 120.3
ARR 119.3
TWR 118.6 / 118.25

TRANSITION ALTITUDE
11 000ft

D-ATIS AP ID-WSSS
128.6

**SINGAPORE/Singapore Changi
RWY 20R/C
REMEX SIX BRAVO ARRIVAL
REMEX 6B
RNAV(GNSS)**



(A) BASIC RNAV ARRIVAL

For non-RNP1/P-RNAV approved aircraft or whose RNP1/P-RNAV capability have been degraded

TRANSITIONS/ROUTE	REMES SIX BRAVO ARRIVAL
G579	AT PARDI TRACK 348° TO REPOV * THEN TO REMES. CROSS REPOV * AT OR BELOW FL270. AT REMES TURN RIGHT AND TRACK 023° TO BTM DVOR/DME THEN TO DOVAN. CROSS BTM DVOR/DME AT OR ABOVE 7 000FT AT MAX IAS 250KTS OR AS DIRECTED BY ATC. CROSS DOVAN AT OR ABOVE 4 000FT. AT DOVAN, TURN LEFT AND TRACK 348° TO BIPOP. CROSS BIPOP AT OR ABOVE 3000FT AT MAX IAS 220KTS. FROM BIPOP, EXPECT RADAR VECTORS FOR ILS APPROACH RWY 20.

* REPOV IS A HOLDING POINT ON ATS ROUTE G579

(B) RADIO COMMUNICATIONS FAILURE PROCEDURE

1	SET TRANSPONDER TO MODE A/C CODE 7600
2	<p>When cleared via REMES 6B by Singapore ATC</p> <p>(a) Maintain last assigned flight level or altitude and proceed on REMES 6B to BIPOP, then direct to NYLON</p> <p>(b) From NYLON commence descent and carry out appropriate landing procedure for RWY 20 as close as possible to EAT or ETA</p> <p>(c) If unable to effect a landing, refer to Singapore AIP for missed approach procedure</p>
3	<p>No clearance or instruction received from Singapore ATC</p> <p>- refer to Singapore AIP for radio communications failure procedure</p>

(C) RADIAL AND DME FROM VOR/DME

WAY POINTS	VTK VOR/DME	SJ VOR/DME
BIPOP	VTK R-054.5/D11.0	SJ R-046.8/D26.2
BTM	VTK R-158.2/D17.9	SJ R-107.0/D17.5
DOVAN	VTK R-114.6/D12.7	SJ R-073.9/D22.5
NYLON	VTK R-023.0/D13.0	SJ R-032.9/D30.0
REMES	VTK R-185.2/D41.2	SJ R-167.9/D30.2
REPOV	VTK R-178.6/D68.2	SJ R-168.3/D57.9