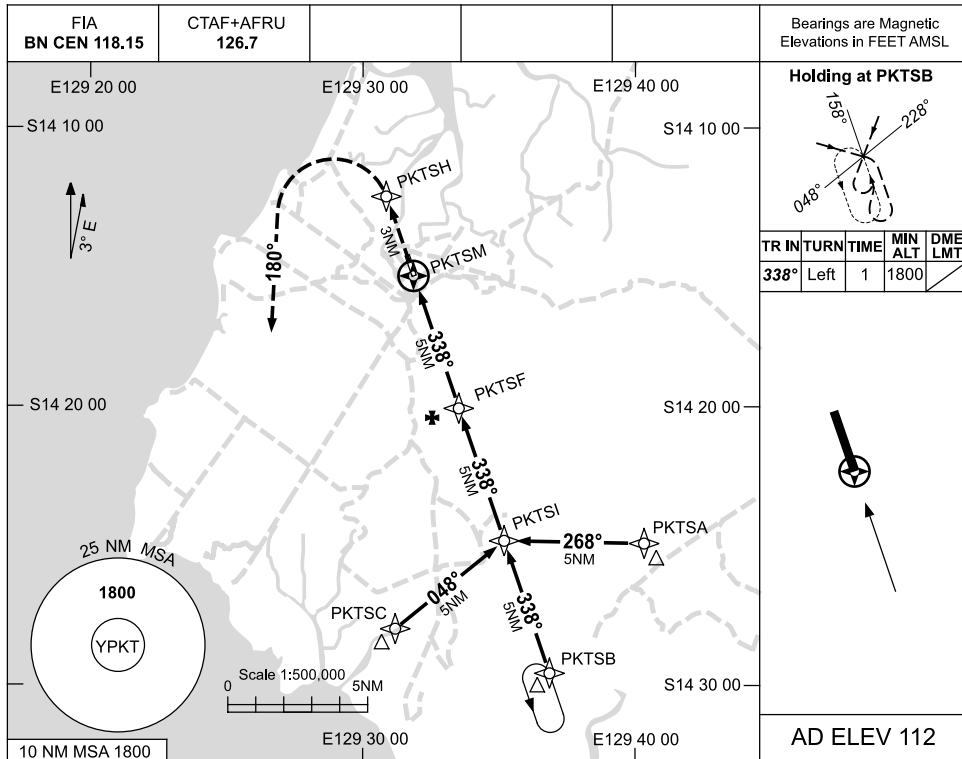


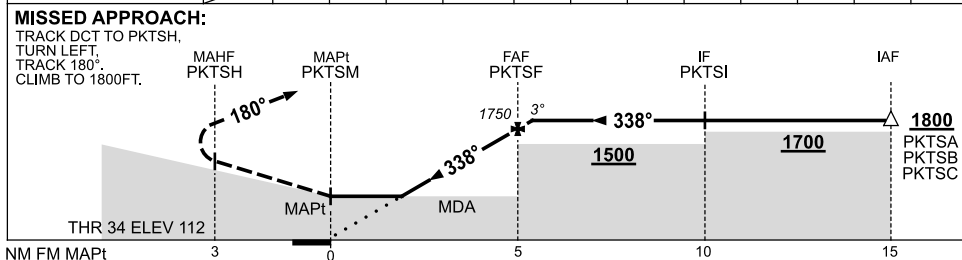
USE QNH

RNAV-Z (GNSS) RWY 34
PORT KEATS, NT (YPKT)

6 MAR 2014



NM TO NEXT WPT	PKTSM	2.2	3	4	PKTSF	0.2						
ALT (3° APCH PATH)		880	1120	1440	1750	1800						



NOTES

CATEGORY	A	B	C	D
S-I GNSS	880 (768-4.3)			NOT APPLICABLE
CIRCLING	930 (818-2.4)		1030 (918-4.0)	
ALTERNATE	(1318-4.4)		(1418-6.0)	

1. MAX IAS:
INITIAL : 210KT.
2. AWIS (PHONE)
08 8978 2188

Changes: AFRU.

PKTGN02-138