

# STANDARD DEPARTURE CHART-INSTRUMENT

VAR5° W

APP 124.85(123.85)  
ATIS 126.25  
TWR 118.1(124.35)

ZBHH HOHHOT/Baita  
NDB RWY26

BEARINGS ARE MAGNETIC  
ALTITUDES, ELEVATIONS  
AND HEIGHTS IN METERS  
DME DISTANCES IN  
NAUTICAL MILES  
DISTANCES IN KM

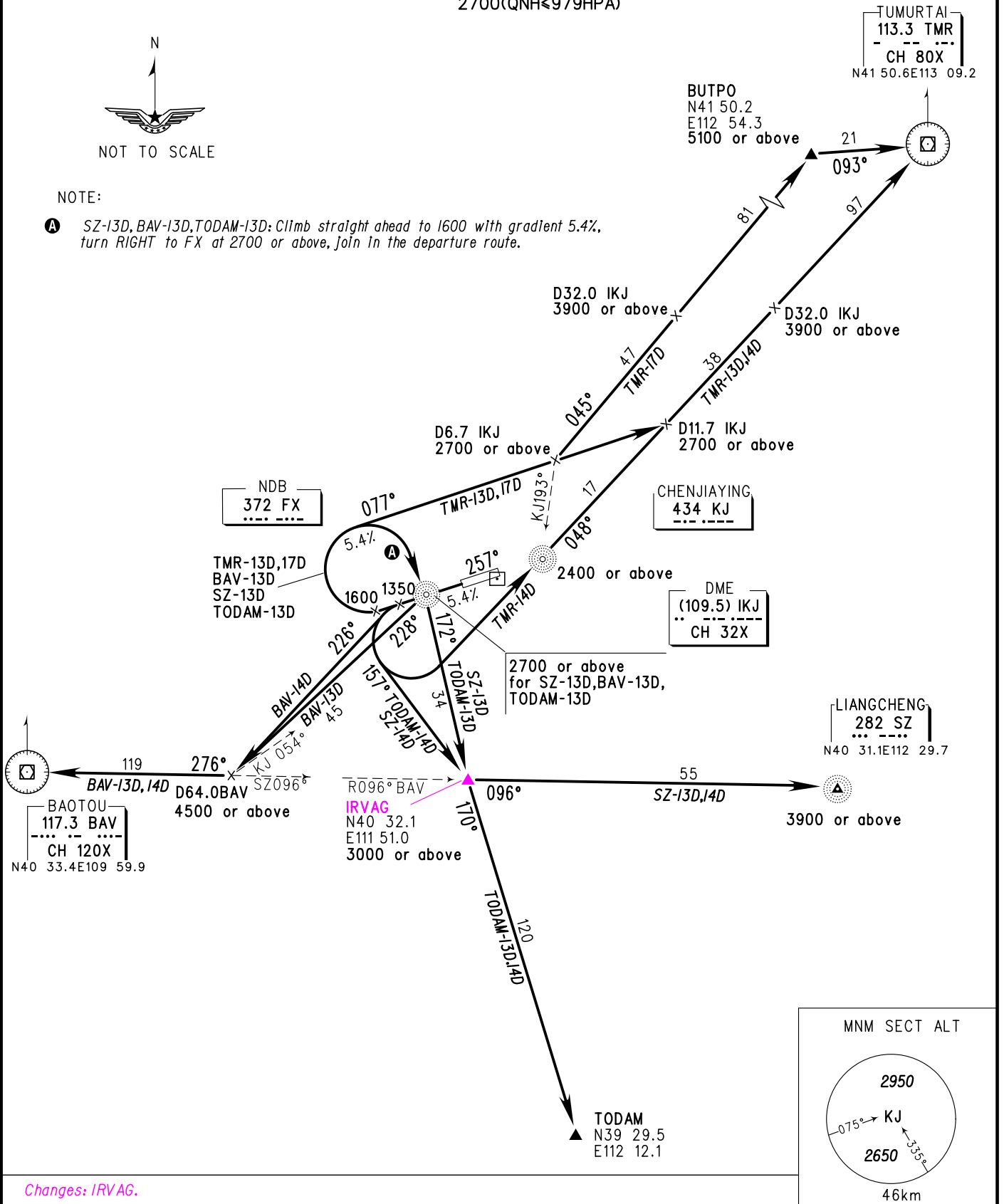
TL 3600  
TA 3000  
3300(QNH≥1031HPA)  
2700(QNH≤979HPA)



NOT TO SCALE

**NOTE:**

- Ⓐ SZ-13D, BAV-13D, TODAM-13D: Climb straight ahead to 1600 with gradient 5.4%, turn RIGHT to FX at 2700 or above, join in the departure route.



Changes: IRVAG.