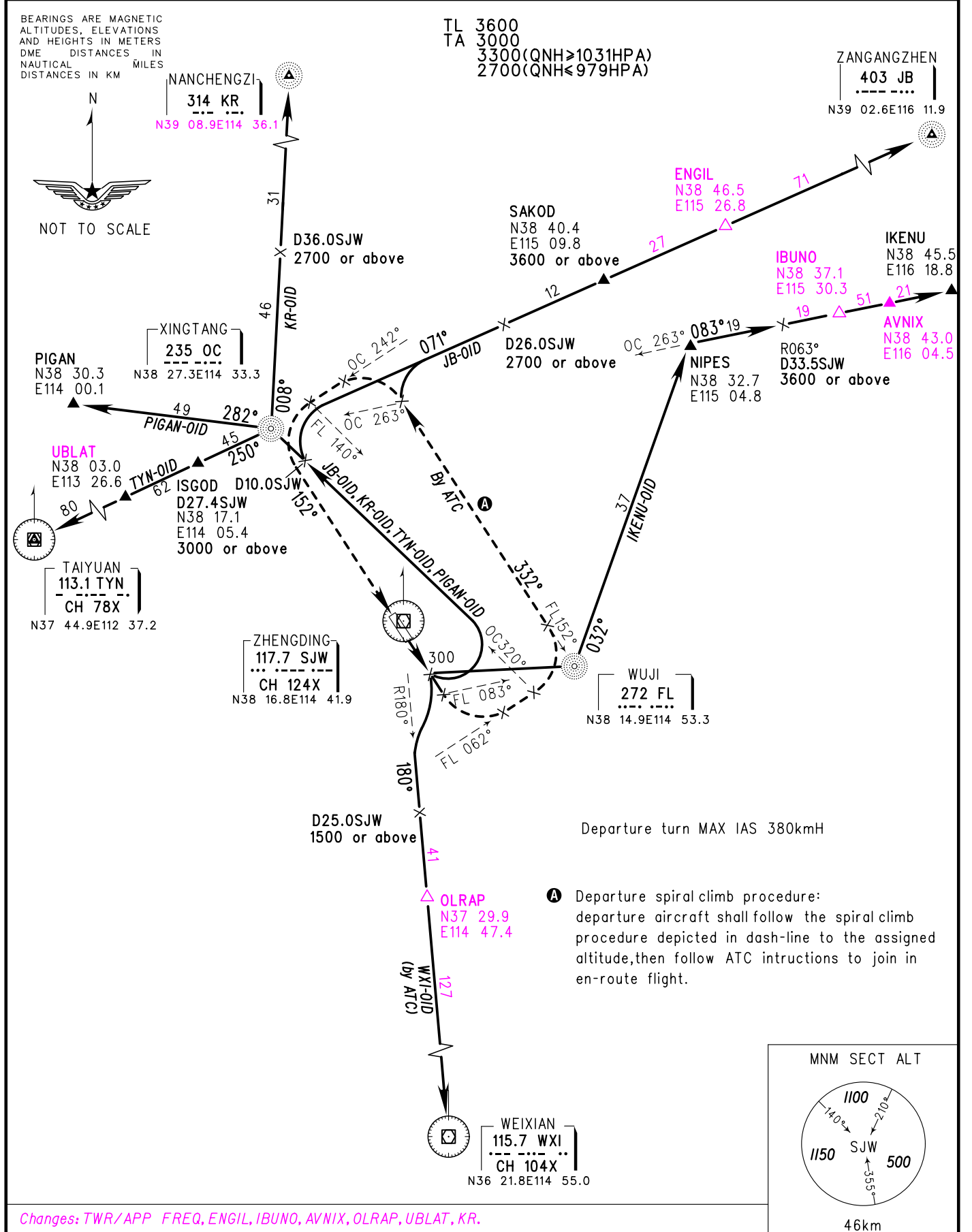


STANDARD DEPARTURE CHART-INSTRUMENT

VAR5° W

ATIS 127.85
APP 120.45(124.75)
TWR 118.35(123.65)

ZBSJ SHIJIAZHUANG/Zhengding RWY15



Changes: TWR/APP FREQ, ENGL, IBUNO, AVNIX, OLRAP, UBLAT, KR.