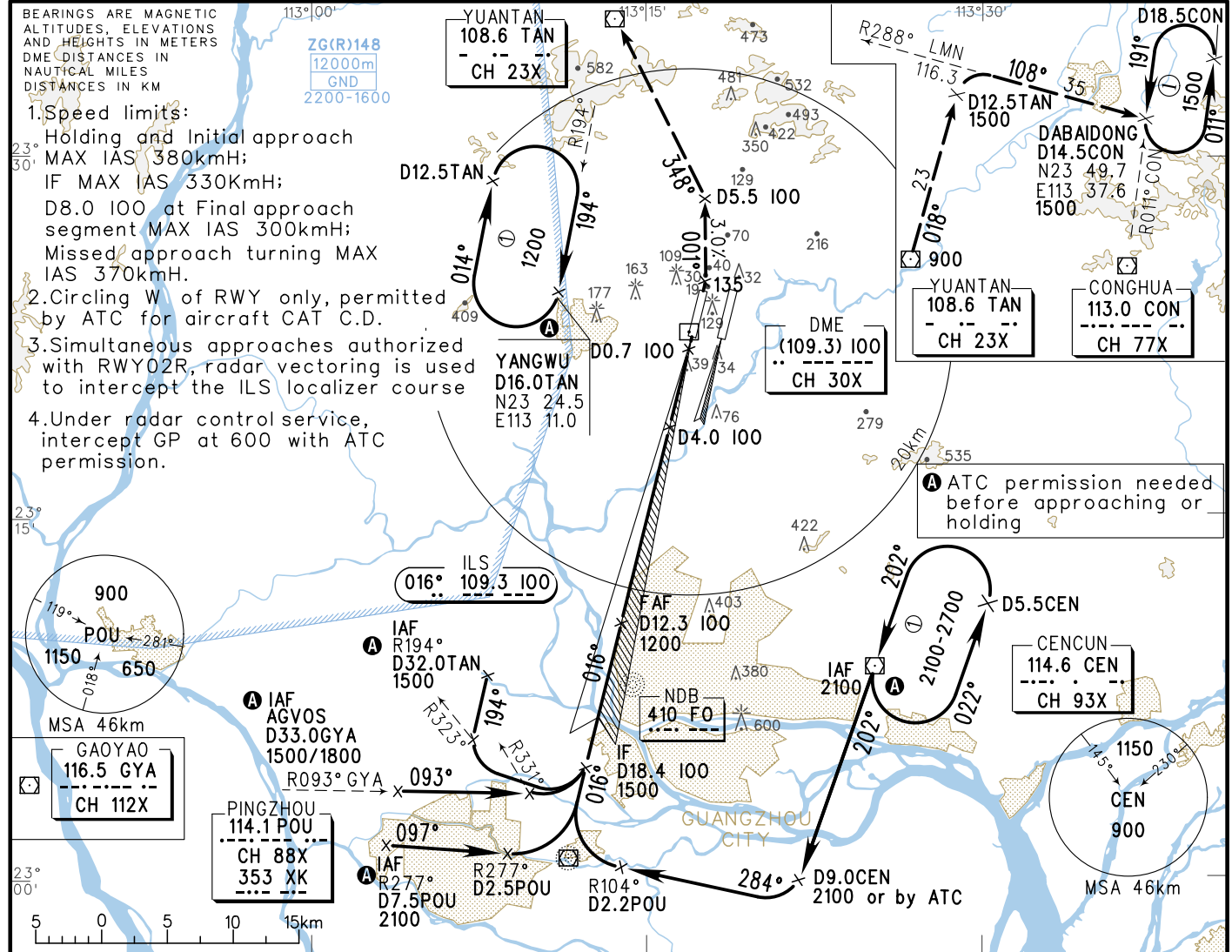


INSTRUMENT APPROACH CHART-ICAO

VAR2°W

ATIS 128.6	APP 126.55(127.75)/AP01
D-ATIS 131.45	119.70(127.75)/AP02
	126.35(119.60)/AP03
AERODROME ELEV 15.2	121.05(124.20)/AP04
HEIGHTS RELATED TO THR RWY02L ELEV 12.4	120.40(124.20)/AP05
	TWR 118.1(E)/118.8(W) (124.3)

ZGGG GUANGZHOU/Baiyun ILS/DME RWY02L



1. Speed limits:

- Holding and Initial approach MAX IAS 380kmH;
- IF MAX IAS 330kmH;
- D8.0 100 at Final approach segment MAX IAS 300kmH;
- Missed approach turning MAX IAS 370kmH.

2. Circling W of RWY only, permitted by ATC for aircraft CAT C.D.

3. Simultaneous approaches authorized with RWY02R, radar vectoring is used to intercept the ILS localizer course

4. Under radar control service, intercept GP at 600 with ATC permission.

900

POU 281°

1150 650

MSA 46km

GAOYAO 116.5 GYA

CH 112X

PINGZHOU 114.1 POU

CH 88X

353 XK

CH 88X

353 XK

CH 88X

353 XK

CH 88X

353 XK

CH 88X

353 XK

CH 88X

353 XK

CH 88X

353 XK

CH 88X

353 XK

CH 88X

353 XK

CH 88X

353 XK

CH 88X

353 XK

CH 88X

353 XK

CH 88X

353 XK

CH 88X

353 XK

CH 88X

353 XK

CH 88X

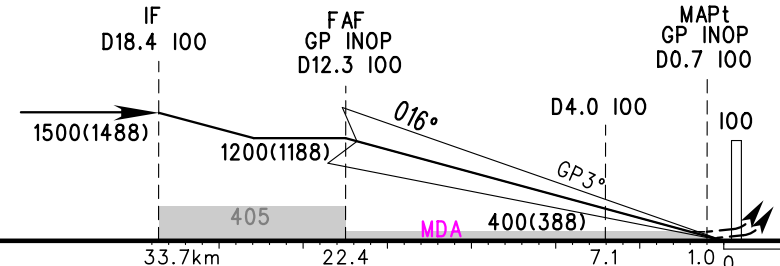
353 XK

GP INOP	DME (100) (NM)	12	10	8	6	4	2	1	
	ALT (m)	1175	981	787	593	400	205		

TL 3600(QNH<980HPA)
3300(QNH>980HPA)
TA 2700

MISSED APPROACH

Climb straight ahead to 135, with climb gradient of 3.0%, turn LEFT on track 001° to D5.5 100, turn LEFT on track R168° TAN to TAN at 900, turn RIGHT on track R018° TAN to D12.5TAN at 1500, turn RIGHT on track R288° LMN to Dabaidong at 1500, then join holding pattern; or instructed by ATC, join holding pattern at YANGWU.



	A	B	C	D	FAF-MAPt(GP INOP) 21.4km					
					GS in kt	150	185	220	260	295
ILS/DME DA(H) RVR/VIS	72(60) 550/800				80	100	120	140	160	180
GP INOP MDA(H) VIS	115(103) 1100				8:40	6:56	5:47	4:57	4:20	3:51
CIRCLING MDA(H) VIS	220(205) 1600	255(240) 2000	355(340) 4400	355(340) 5000	2.2	2.7	3.2	3.8	4.3	4.9

Changes: Landing minlma, chart number.