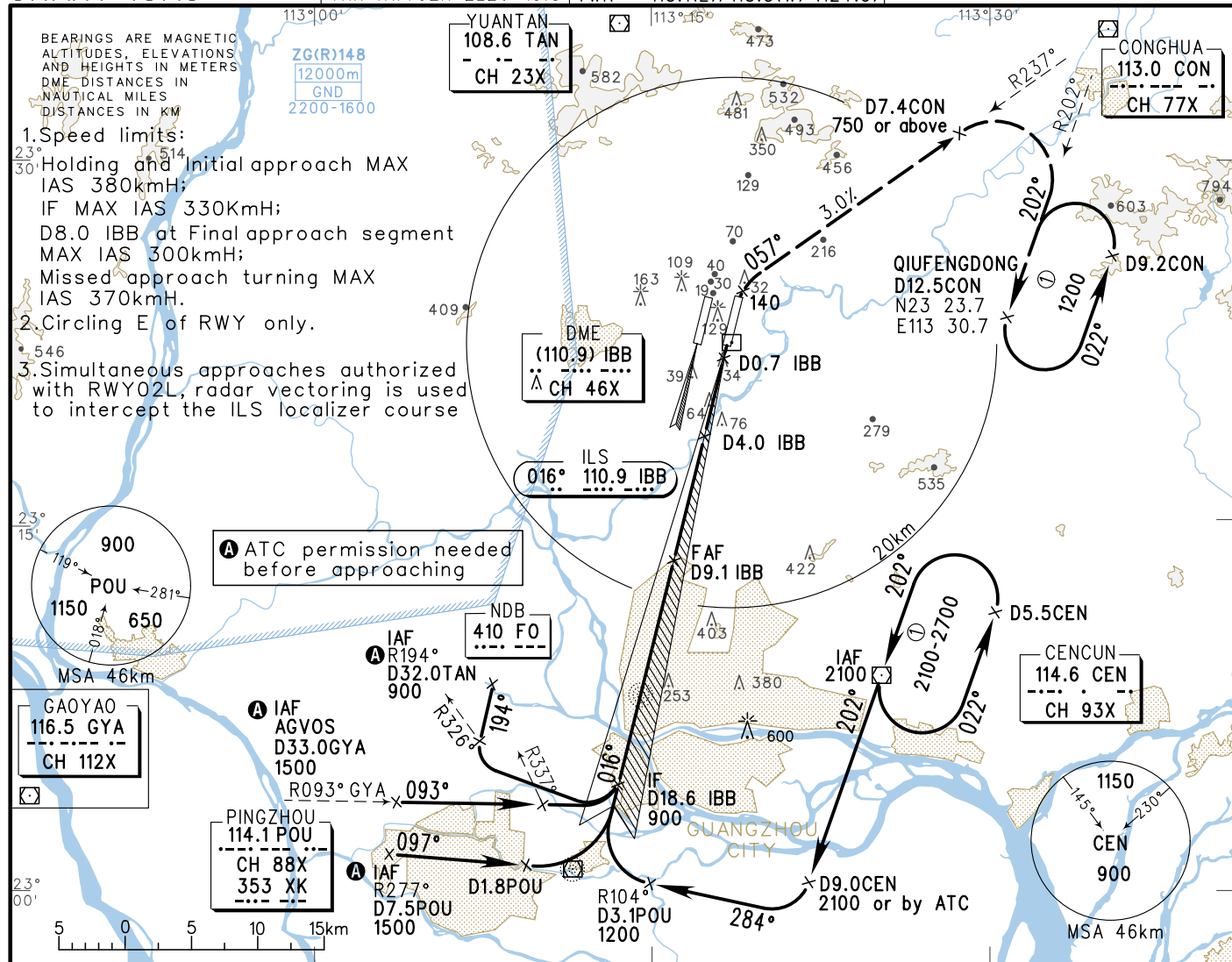


# INSTRUMENT APPROACH CHART-ICAO

VAR2°W

ATIS 128.6	APP 126.55(127.75)/AP01
D-ATIS 131.45	119.70(127.75)/AP02
AERODROME ELEV 15.2	126.35(119.60)/AP03
HEIGHTS RELATED TO 121.05(124.20)/AP04	120.40(124.20)/AP05
THR RWY02R ELEV 13.8	TWR 118.1(E)/118.8(W) (124.3)

**ZGGG**  
**GUANGZHOU/Baiyun**  
ILS/DME RWY02R

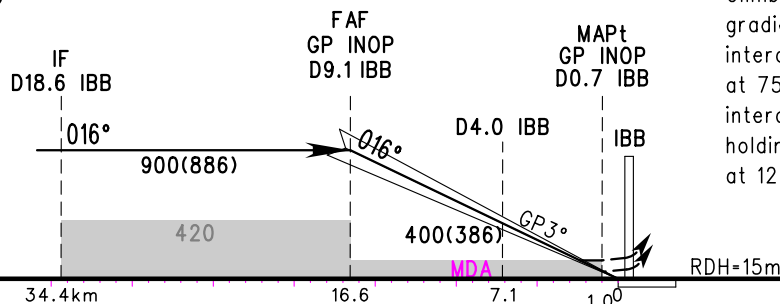


GP INOP	DME (IBB) (NM)	9	8	7	6	5	4	3	2
	ALT (m)	886	789	692	595	497	400	303	206

TL 3600(QNH<980HPA)  
3300(QNH ≥980HPA)  
TA 2700

### MISSED APPROACH

Climb straight ahead to 140 with gradient of 3.0%, turn RIGHT and intercept R237° CON to D7.4CON at 750 or above, turn RIGHT and intercept R202° CON, then join holding pattern over Qiu Fengdong at 1200; or instructed by ATC.



	A	B	C	D	FAF-MAPt(GP INOP) 15.6km						
ILS/DME DA(H) RVR/VIS	74(60) 550/800				GS in	80	100	120	140	160	180
	140(126) 1600				kt	150	185	220	260	295	335
GP INOP MDA(H) VIS	140(126) 1600				Time	6:19	5:03	4:13	3:37	3:10	2:48
	140(126) 1600				Rate of descent	2.2	2.7	3.2	3.8	4.3	4.9
CIRCLING MDA(H) VIS	220(205) 1600	255(240) 2000	355(340) 4400	355(340) 5000	Changes: Landing minima.						