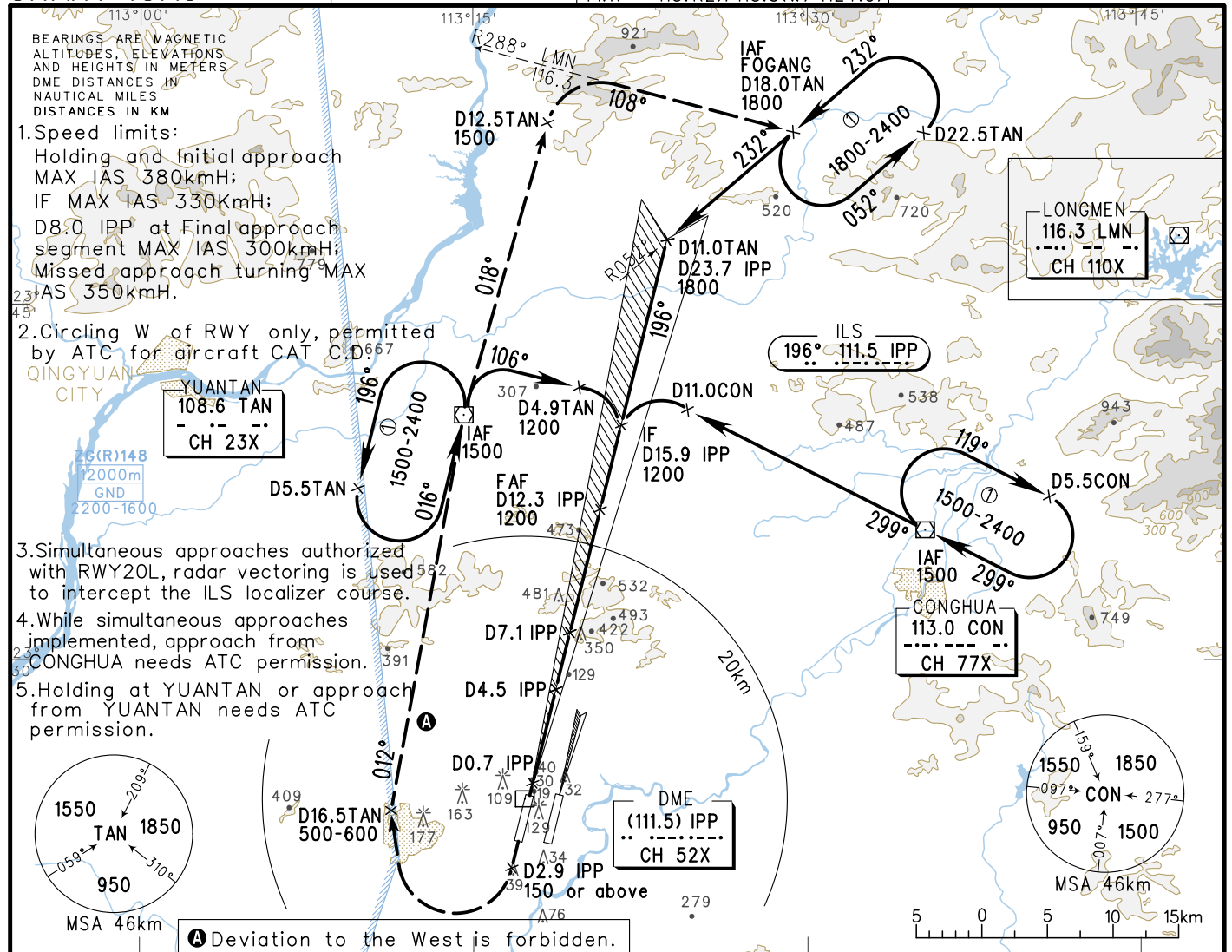


INSTRUMENT APPROACH CHART-ICAO

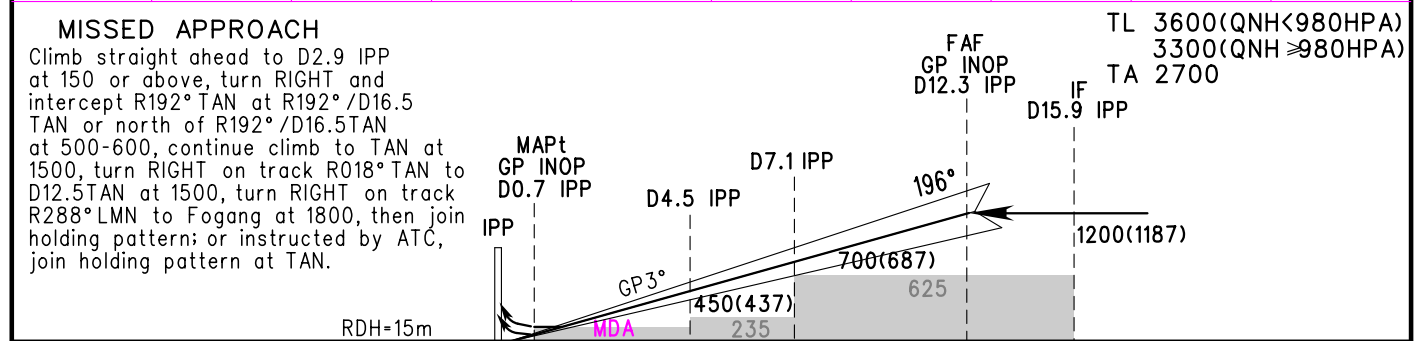
VAR2° W

ATIS 128.6	APP 126.55(127.75)/AP01
D-ATIS 131.45	119.70(127.75)/AP02
AERODROME ELEV 15.2	126.35(119.60)/AP03
HEIGHTS RELATED TO	121.05(124.20)/AP04
THR RWY20R ELEV 13.0	120.40(124.20)/AP05
TWR 118.1(E)/118.8(W) (124.3)	

ZGGG
GUANGZHOU/Baiyun
ILS/DME RWY20R



GP INOP	DME (IPP) (NM)	1	2	4	6	8	10	12
	ALT (m)		205	399	594	788	982	1176



ILS/DME	DA(H)	73(60)				FAF-MAPt(GP INOP) 21.4km						
	RVR/VIS	550/800				GS in kt	80	100	120	140	160	180
GP INOP	MDA(H)	150(137)				Time min:sec	8:40	6:56	5:47	4:57	4:20	3:51
	VIS	1800				Rate of descent m/s	2.2	2.7	3.2	3.8	4.3	4.9
CIRCLING	MDA(H)	220(205)	255(240)	355(340)	355(340)	Changes: Landing minima.						
	VIS	1600	2000	4400	5000							