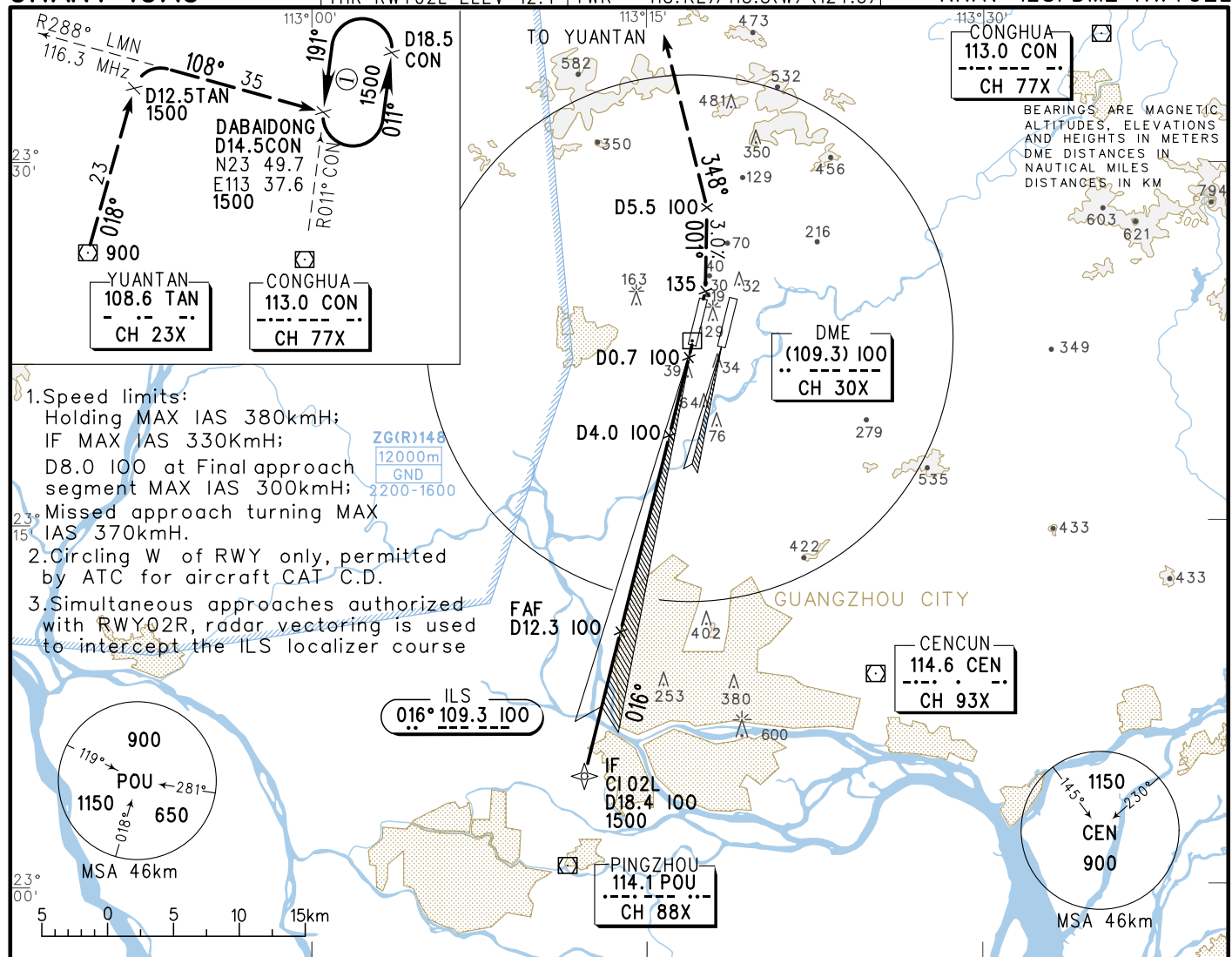


INSTRUMENT APPROACH CHART-ICAO

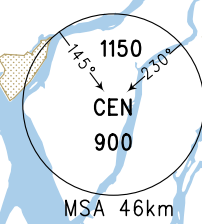
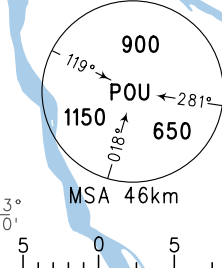
VAR2° W

ATIS 128.6	APP 126.55(127.75)/AP01
D-ATIS 131.45	119.70(127.75)/AP02
AERODROME ELEV 15.2	126.35(119.60)/AP03
HEIGHTS RELATED TO	121.05(124.20)/AP04
THR RWY02L ELEV 12.4	120.40(124.20)/AP05
TWR 118.1(E)/118.8(W) (124.3)	

ZGGG
GUANGZHOU/Baiyun
RNAV ILS/DME RWY02L



- Speed limits:
Holding MAX IAS 380kmH;
IF MAX IAS 330kmH;
D8.0 100 at Final approach segment MAX IAS 300kmH;
Missed approach turning MAX IAS 370kmH.
- Circling W of RWY only, permitted by ATC for aircraft CAT C.D.
- Simultaneous approaches authorized with RWY02R, radar vectoring is used to intercept the ILS localizer course

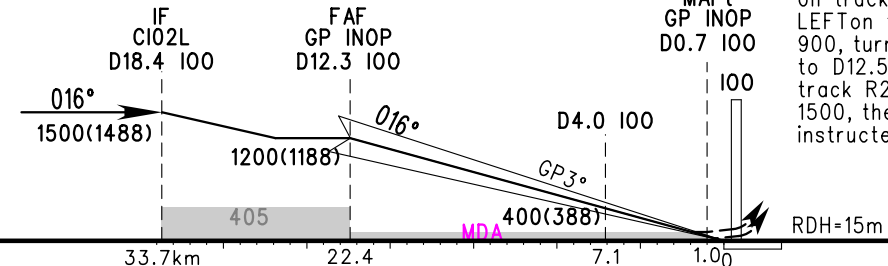


GP INOP	DME (100) (NM)	12	10	8	6	4	2	1	
	ALT (m)	1175	981	787	593	400	205		

TL 3600(QNH<980HPA)
3300(QNH>980HPA)
TA 2700

MISSED APPROACH

Climb straight ahead to 135, with climb gradient of 3.0%, turn LEFT on track 001° to D5.5 100, turn LEFT on track R168° TAN to TAN at 900, turn RIGHT on track R018° TAN to D12.5TAN at 1500, turn RIGHT on track R288°LMN to Dabaidong at 1500, then join holding pattern; or instructed by ATC.



	A	B	C	D	FAF-MAPt(GP INOP) 21.4km							
ILS/DME DA(H) RVR/VIS	72(60) 550/800				GS in	80	100	120	140	160	180	
					kt	150	185	220	260	295	335	
GP INOP MDA(H) VIS	115(103) 1100				Time	8:40	6:56	5:47	4:57	4:20	3:51	
					min:sec							
CIRCLING MDA(H) VIS	220(205) 1600	255(240) 2000	355(340) 4400	355(340) 5000	Rate of descent	2.2	2.7	3.2	3.8	4.3	4.9	
					m/s							

Changes: Landing minima, chart number.