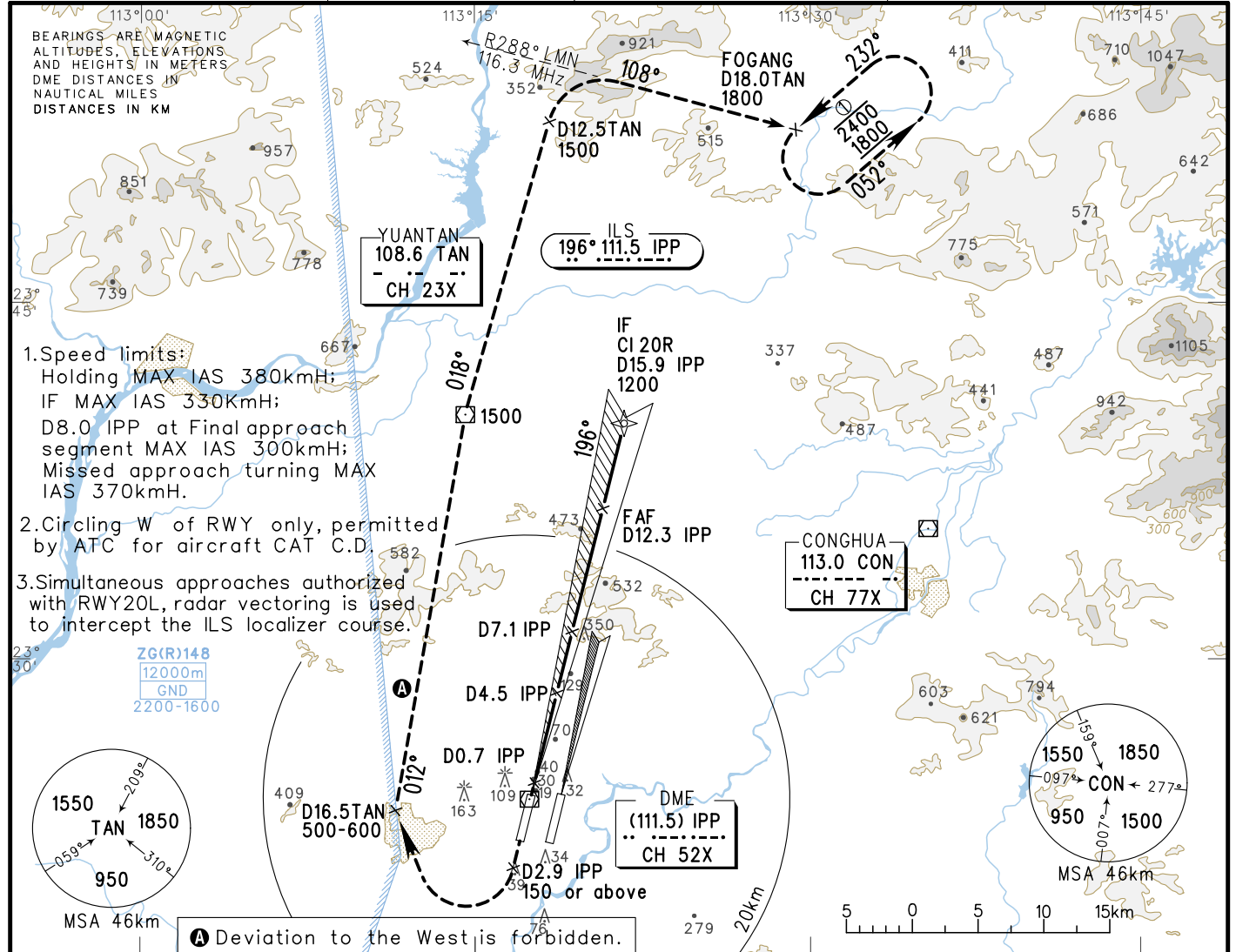


# INSTRUMENT APPROACH CHART-ICAO

VAR2° W

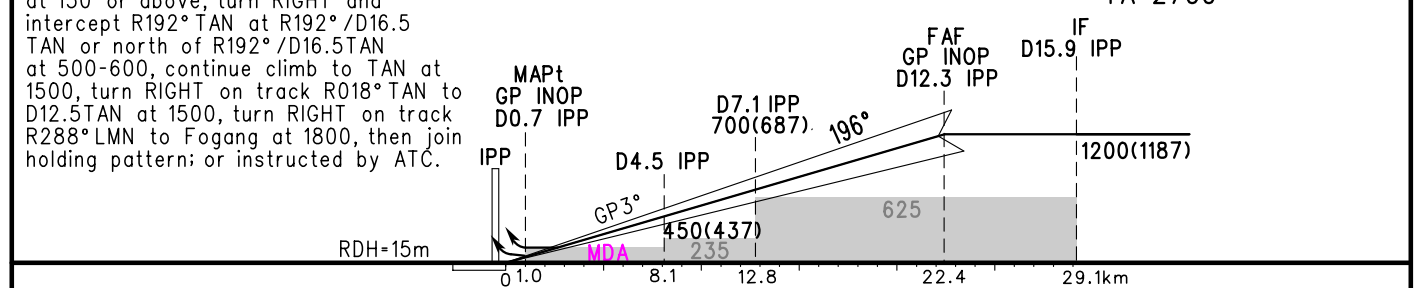
ATIS 128.6	APP 126.55(127.75)/AP01
D-ATIS 131.45	119.70(127.75)/AP02
AERODROME ELEV 15.2	126.35(119.60)/AP03
HEIGHTS RELATED TO	121.05(124.20)/AP04
THR RWY20R ELEV 13.0	120.40(124.20)/AP05
TWR 118.1(E)/118.8(W) (124.3)	

**ZGGG**  
**GUANGZHOU/Baiyun**  
RNAV ILS/DME RWY20R



GP INOP	DME (IPP) (NM)	1	2	4	6	8	10	12
	ALT (m)		205	399	594	788	982	1176

**MISSED APPROACH**  
 Climb straight ahead to D2.9 IPP at 150 or above, turn RIGHT and intercept R192° TAN at R192°/D16.5 TAN or north of R192°/D16.5 TAN at 500-600, continue climb to TAN at 1500, turn RIGHT on track R018° TAN to D12.5 TAN at 1500, turn RIGHT on track R288° LMN to Fogang at 1800, then join holding pattern; or instructed by ATC.  
 TL 3600(QNH<980HPA)  
 TA 2700  
 3300(QNH>980HPA)



ILS/DME	DA(H) RVR/VIS	FAF-MAPt(GP INOP) 21.4km			
		A	B	C	D
	73(60) 550/800				
GP INOP	MDA(H) VIS	150(137) 1800			
CIRCLING	MDA(H) VIS	220(205) 1600	255(240) 2000	355(340) 4400	355(340) 5000

GS in kt	80	100	120	140	160	180
kmH	150	185	220	260	295	335
Time min:sec	8:40	6:56	5:47	4:57	4:20	3:51
Rate of descent m/s	2.2	2.7	3.2	3.8	4.3	4.9

Changes: Landing minima, chart number.