

ATIS 127.0  
 D-ATIS 131.45  
 APP 126.55(127.75)/AP01  
 119.70(127.75)/AP02  
 126.35(119.60)/AP03  
 121.05(124.20)/AP04  
 120.40(124.20)/AP05  
 118.1(E)/118.8(W) (124.3)

STANDARD DEPARTURE  
CHART-INSTRUMENT

ZGGG  
 GUANGZHOU/Baiyun  
 RWY02R

VAR2° W TWR

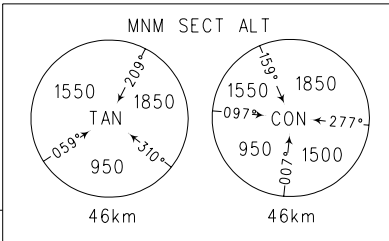
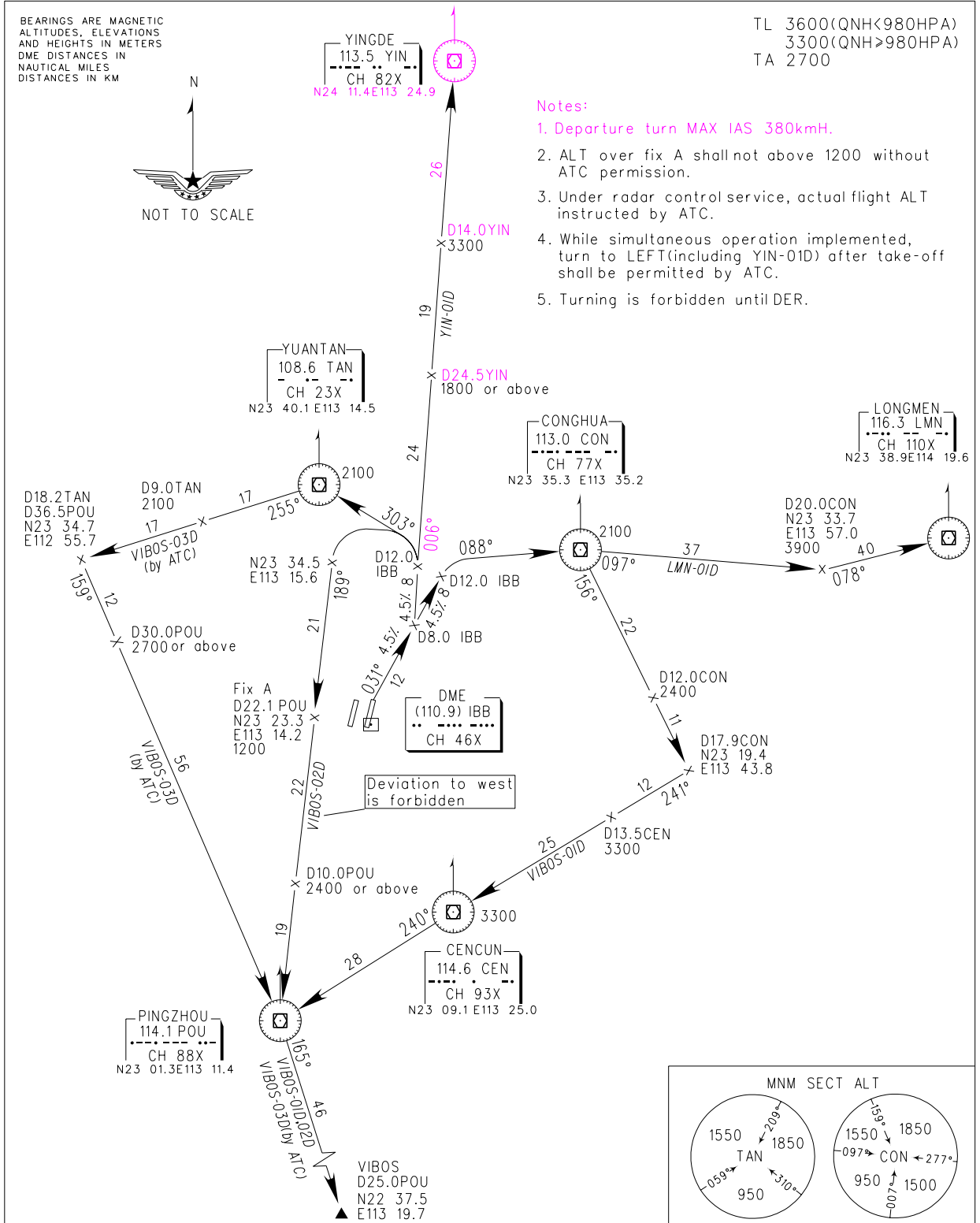
TL 3600(QNH<980HPA)  
 3300(QNH>980HPA)  
 TA 2700

BEARINGS ARE MAGNETIC  
 ALTITUDES, ELEVATIONS  
 AND HEIGHTS IN METERS  
 DME DISTANCES IN  
 NAUTICAL MILES  
 DISTANCES IN KM



Notes:

1. Departure turn MAX IAS 380kmH.
2. ALT over fix A shall not above 1200 without ATC permission.
3. Under radar control service, actual flight ALT instructed by ATC.
4. While simultaneous operation implemented, turn to LEFT(including YIN-01D) after take-off shall be permitted by ATC.
5. Turning is forbidden until DER.



Changes: YIN displaced, notes.