

STANDARD DEPARTURE CHART-INSTRUMENT

VAR2° W TWR 118.1(E)/118.8(W) (124.3)

ZGGG
GUANGZHOU/Baiyun
RWY20L

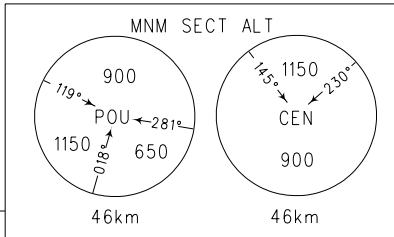
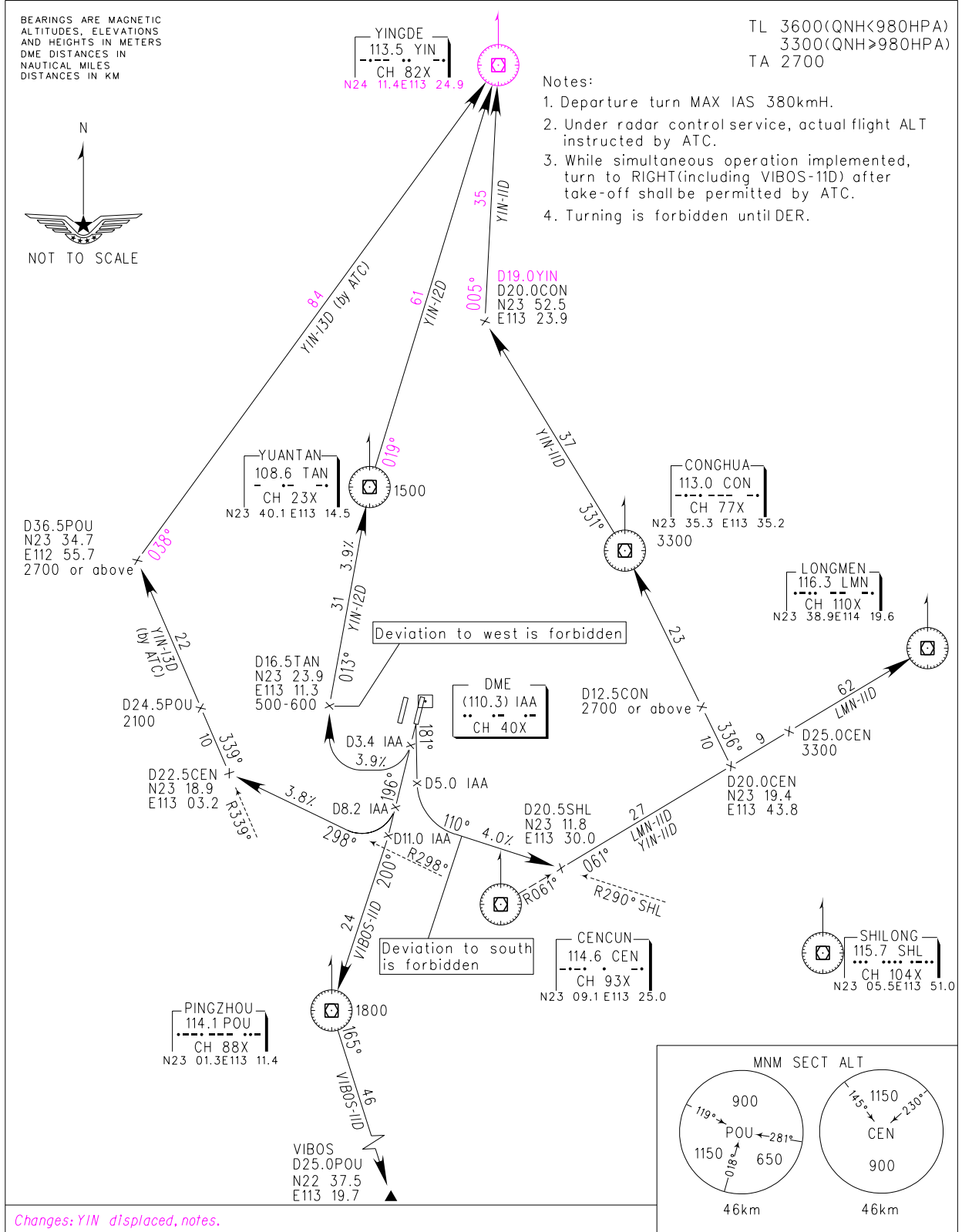
ATIS 127.0
D-ATIS 131.45
APP 126.55(127.75)/AP01
119.70(127.75)/AP02
126.35(119.60)/AP03
121.05(124.20)/AP04
120.40(124.20)/AP05
118.1(E)/118.8(W) (124.3)

TL 3600(QNH<980HPA)
3300(QNH≥980HPA)
TA 2700

BEARINGS ARE MAGNETIC
ALTITUDES, ELEVATIONS
AND HEIGHTS IN METERS
DME DISTANCES IN
NAUTICAL MILES
DISTANCES IN KM



- Notes:
1. Departure turn MAX IAS 380kmh.
 2. Under radar control service, actual flight ALT instructed by ATC.
 3. While simultaneous operation implemented, turn to RIGHT(including VIBOS-11D) after take-off shall be permitted by ATC.
 4. Turning is forbidden until DER.



Changes: YIN displaced, notes.