

# STANDARD DEPARTURE CHART-INSTRUMENT

VAR2° W TWR 118.1(E)/118.8(W) (124.3)

ZGGG  
GUANGZHOU/Baiyun  
RWY02L

ATIS 127.0  
D-ATIS 131.45  
APP 126.55(127.75)/AP01  
119.70(127.75)/AP02  
126.35(119.60)/AP03  
121.05(124.20)/AP04  
120.40(124.20)/AP05  
118.1(E)/118.8(W) (124.3)

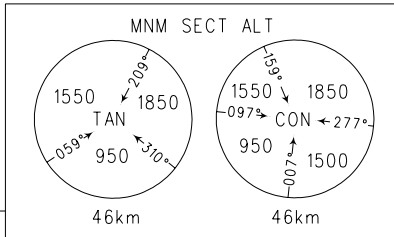
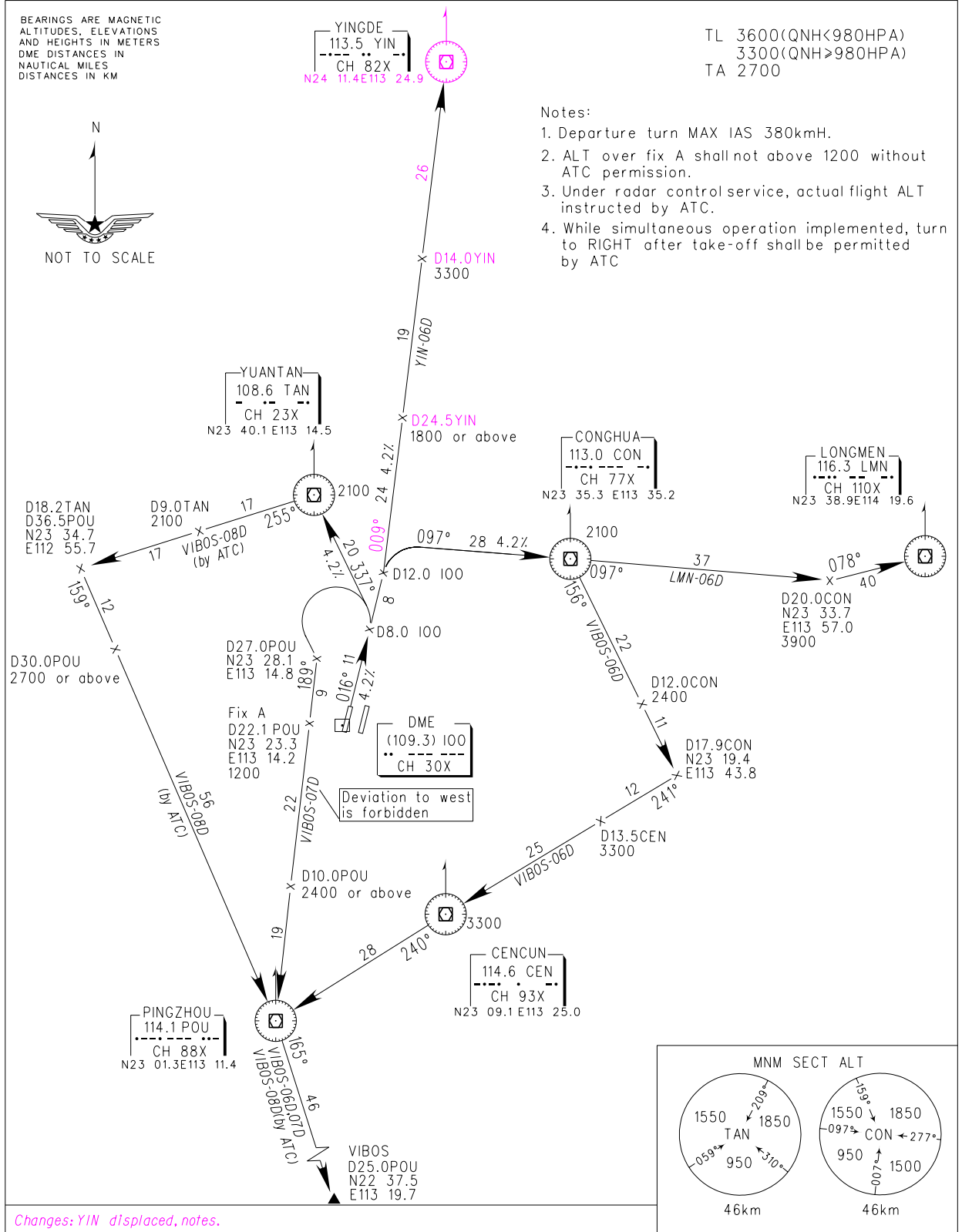
BEARINGS ARE MAGNETIC  
ALTITUDES, ELEVATIONS  
AND HEIGHTS IN METERS  
DME DISTANCES IN  
NAUTICAL MILES  
DISTANCES IN KM



TL 3600(QNH<980HPA)  
3300(QNH>980HPA)  
TA 2700

Notes:

1. Departure turn MAX IAS 380km/h.
2. ALT over fix A shall not above 1200 without ATC permission.
3. Under radar control service, actual flight ALT instructed by ATC.
4. While simultaneous operation implemented, turn to RIGHT after take-off shall be permitted by ATC



Changes: YIN displaced, notes.