

STANDARD DEPARTURE CHART-INSTRUMENT

VAR2° W

ZGGG
GUANGZHOU/Baiyun
RNAV Rwy20L

BEARINGS ARE MAGNETIC ALTITUDES,ELEVATIONS
AND HEIGHTS IN METERS DME DISTANCES IN
NAUTICAL MILES DISTANCES IN KM

ATIS 127.0
D-ATIS 131.45

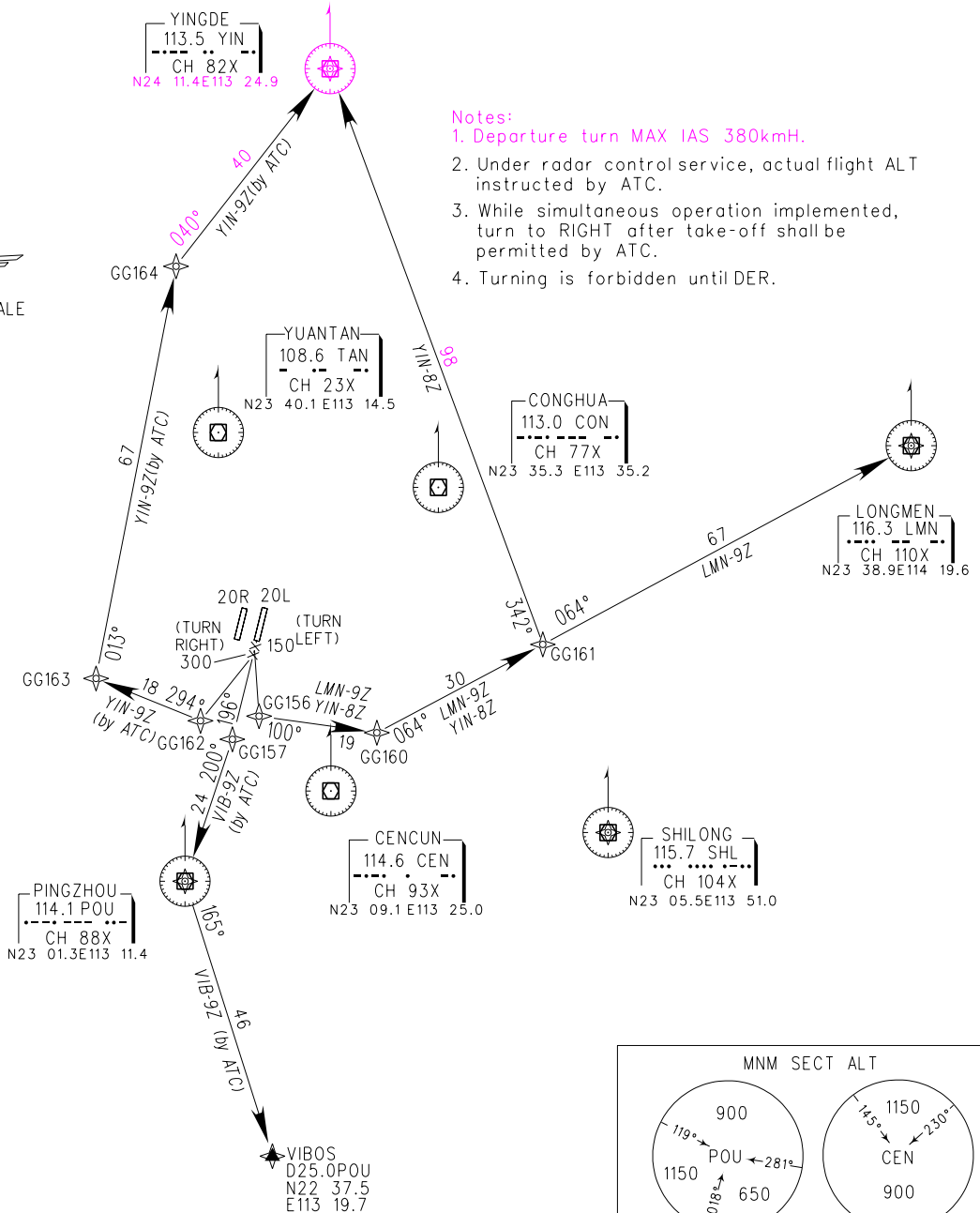
TWR 118.1(E)/118.8(W) (124.3)

APP 126.55(127.75)/AP01
119.70(127.75)/AP02
126.35(119.60)/AP03
121.05(124.20)/AP04
120.40(124.20)/AP05

TL 3600(QNH<980HPA)
3300(QNH>980HPA)
TA 2700

1. RADAR REQUIRED
2. RNAV 1
3. GNSS,DME/DME/IRU REQUIRED

All coordinates used in the procedure are operational equivalent to WGS-84 coordinates.



- Notes:
1. Departure turn MAX IAS 380kmH.
 2. Under radar control service, actual flight ALT instructed by ATC.
 3. While simultaneous operation implemented, turn to RIGHT after take-off shall be permitted by ATC.
 4. Turning is forbidden until DER.

Changes: YIN displaced, APP FREQ, notes, procedures.