

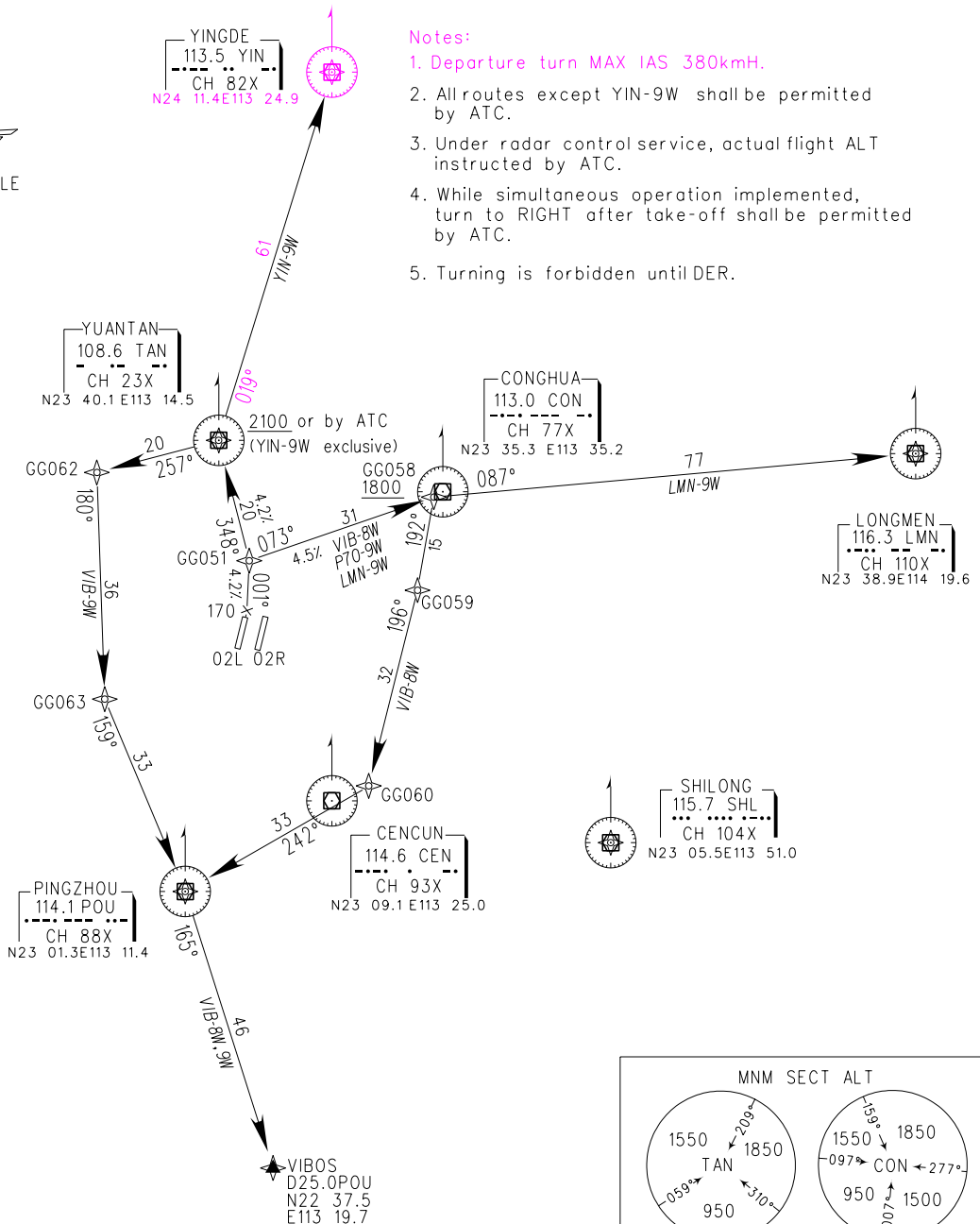
# STANDARD DEPARTURE CHART-INSTRUMENT

VAR2° W

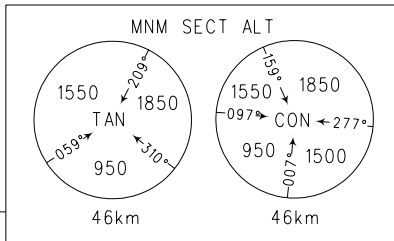
ZGGG  
GUANGZHOU/Baiyun  
RNAV Rwy02L

BEARINGS ARE MAGNETIC ALTITUDES,ELEVATIONS AND HEIGHTS IN METERS DME DISTANCES IN NAUTICAL MILES DISTANCES IN KM	ATIS 127.0 D-ATIS 131.45	APP 126.55(127.75)/AP01 119.70(127.75)/AP02 126.35(119.60)/AP03 121.05(124.20)/AP04 120.40(124.20)/AP05	TL 3600(QNH<980HPA) 3300(QNH>980HPA) TA 2700
	1. RADAR REQUIRED 2. RNAV 1 3. GNSS,DME/DME/IRU REQUIRED		

All coordinates used in the procedure are operational equivalent to WGS-84 coordinates.



- Notes:**
1. Departure turn MAX IAS 380kmH.
  2. All routes except YIN-9W shall be permitted by ATC.
  3. Under radar control service, actual flight ALT instructed by ATC.
  4. While simultaneous operation implemented, turn to RIGHT after take-off shall be permitted by ATC.
  5. Turning is forbidden until DER.



Changes: YIN displaced, APP FREQ, notes, procedures.