

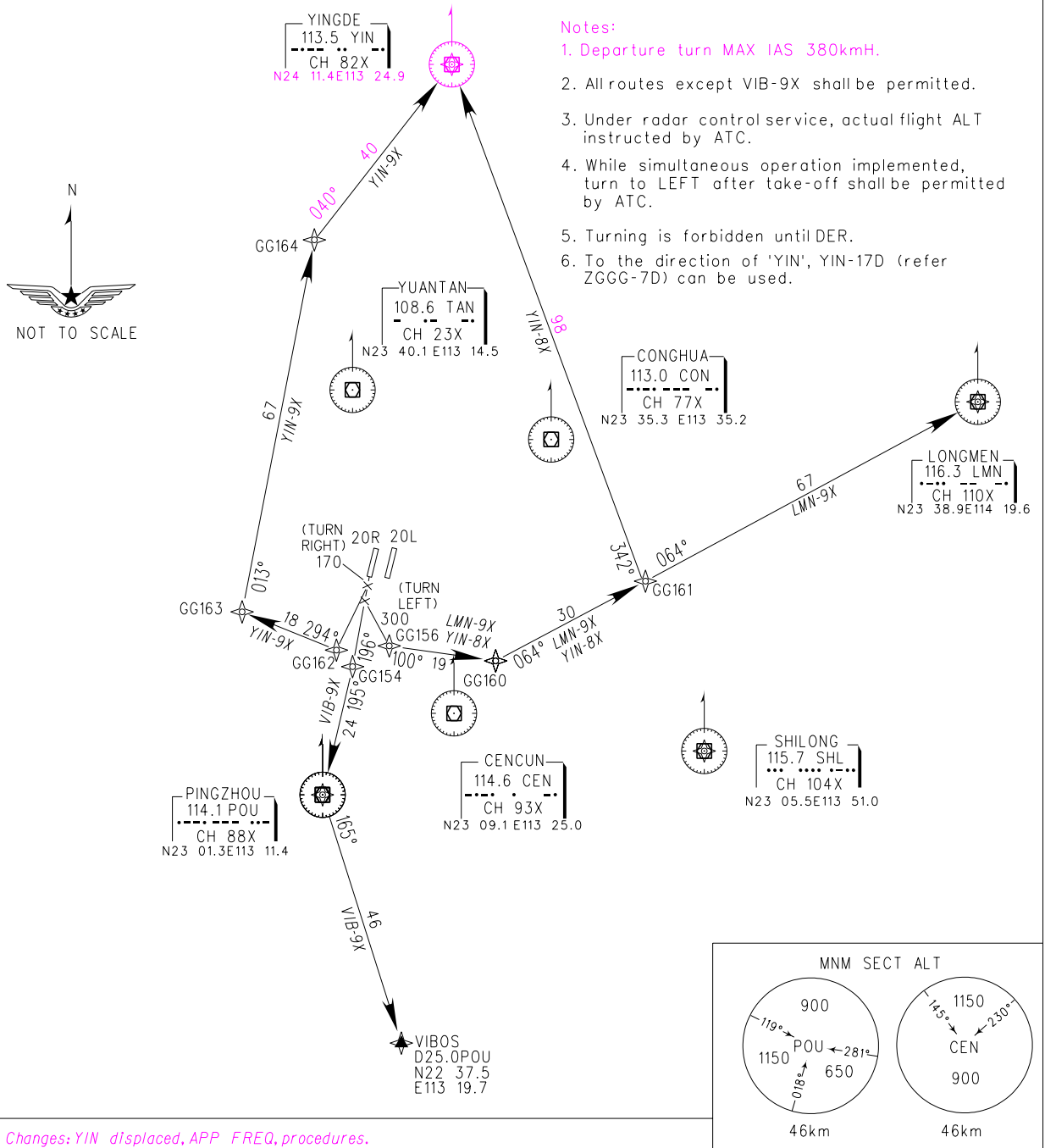
# STANDARD DEPARTURE CHART-INSTRUMENT

VAR2° W

ZGGG  
GUANGZHOU/Baiyun  
RNAV Rwy20R

BEARINGS ARE MAGNETIC ALTITUDES,ELEVATIONS AND HEIGHTS IN METERS DME DISTANCES IN NAUTICAL MILES DISTANCES IN KM	ATIS 127.0	APP 126.55(127.75)/AP01 119.70(127.75)/AP02 126.35(119.60)/AP03 121.05(124.20)/AP04 120.40(124.20)/AP05	TL 3600(QNH<980HPA) 3300(QNH>980HPA) TA 2700
	D-ATIS 131.45		
1. RADAR REQUIRED	TWR 118.1(E)/118.8(W) (124.3)		
2. RNAV 1			
3. GNSS,DME/DME/IRU REQUIRED			

All coordinates used in the procedure are operational equivalent to WGS-84 coordinates.



Changes: YIN displaced, APP FREQ, procedures.