

# STANDARD ARRIVAL CHART-INSTRUMENT

VAR2° W

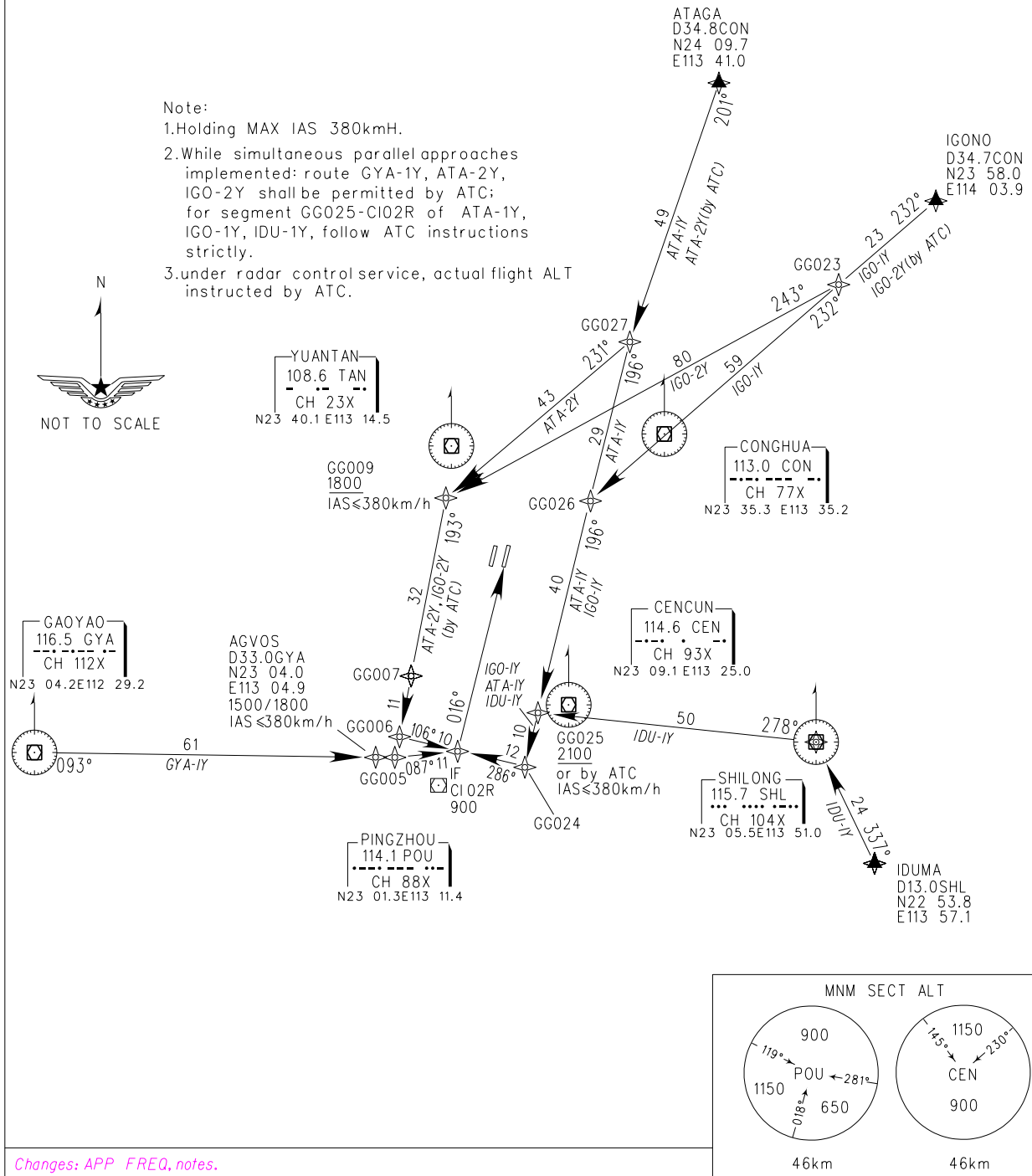
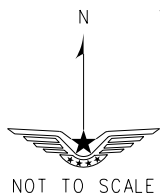
ZGGG  
GUANGZHOU/Baiyun  
RNAV RWY 02R

BEARINGS ARE MAGNETIC ALTITUDES,ELEVATIONS AND HEIGHTS IN METERS DME DISTANCES IN NAUTICAL MILES DISTANCES IN KM	ATIS 127.0 D-ATIS 131.45	APP 126.55(127.75)/AP01 119.70(127.75)/AP02 126.35(119.60)/AP03 121.05(124.20)/AP04 120.40(124.20)/AP05	TL 3600(QNH<980HPA) 3300(QNH>980HPA) TA 2700
	1. RADAR REQUIRED 2. RNAV 1 3. GNSS,DME/DME/IRU REQUIRED	TWR 118.1(E)/118.8(W) (124.3)	

All coordinates used in the procedure are operational equivalent to WGS-84 coordinates.

Note:

- 1.Holding MAX IAS 380kmH.
- 2.While simultaneous parallel approaches implemented: route GYA-1Y, ATA-2Y, IGO-2Y shall be permitted by ATC; for segment GG025-CI02R of ATA-1Y, IGO-1Y, IDU-1Y, follow ATC instructions strictly.
- 3.under radar control service, actual flight ALT instructed by ATC.



Changes: APP FREQ, notes.