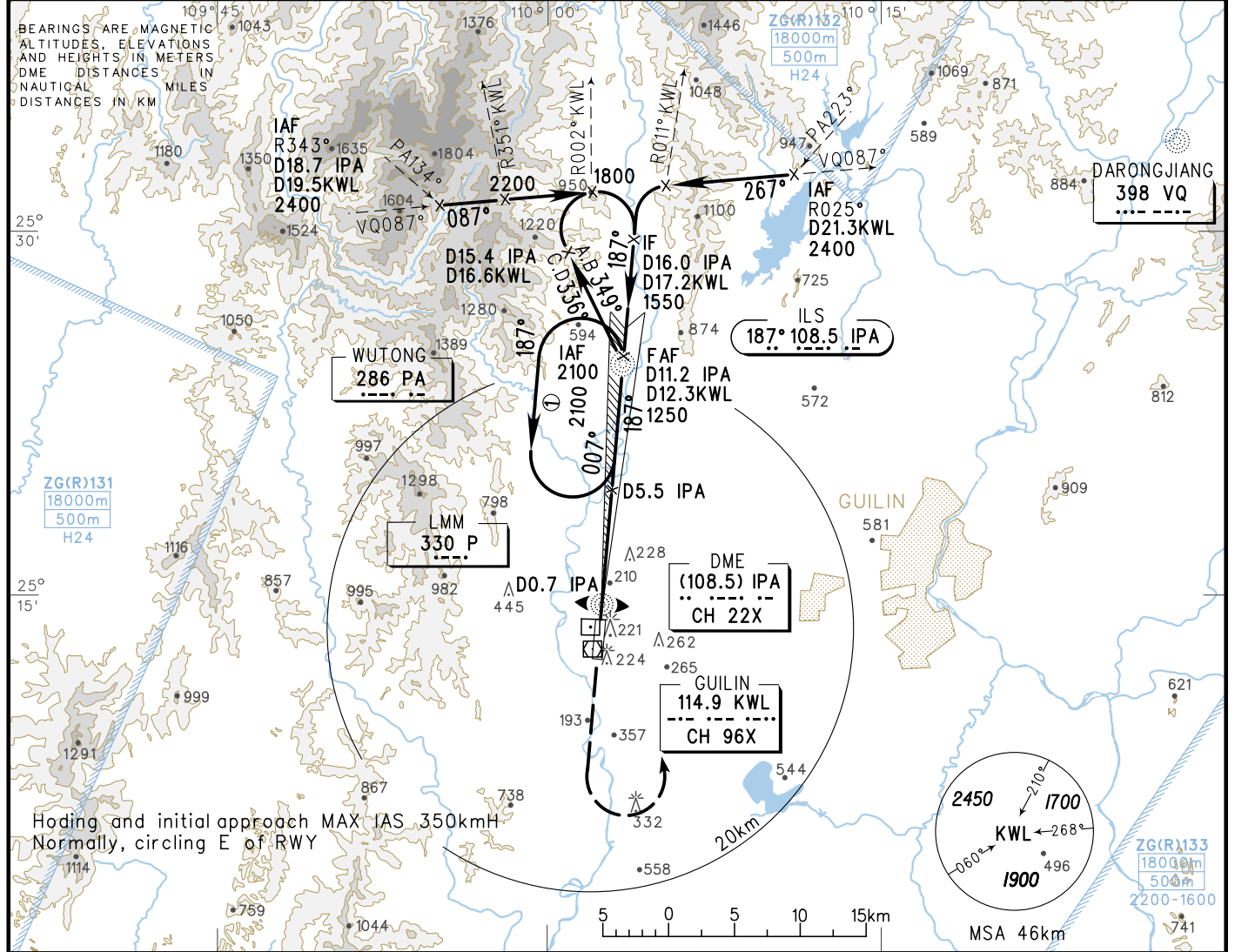


INSTRUMENT APPROACH CHART-ICAO

AERODROME ELEV 174
 HEIGHTS RELATED TO THR RWY19 ELEV 173
 ATIS 126.45
 APP 120.85(124.65)
 TWR 118.0 (118.7)

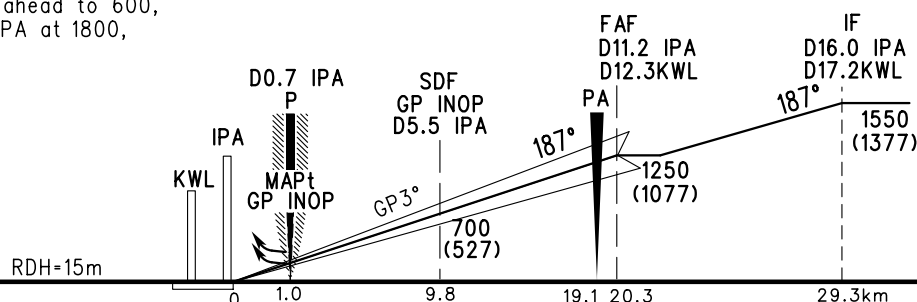
ZGKL GUILIN/Liangjiang
 ILS/DME RWY19



GP INOP	DME (IPA) (NM)	2	3	4	5	6	7	8	9
	ALT (m)	367	463	560	656	752	848	944	1040

MISSED APPROACH
 Climb straight ahead to 600,
 turn LEFT to PA at 1800,
 contact ATC.

TL 3600
 TA 3000
 3300(QNH≥1031HPA)
 2700(QNH≤979HPA)



		A	B	C	D	FAF-MAPt(GP INOP) 19.3km						
ILS/DME	DA(H)	233(60)				238(65)	GS in kt					
	RVR/VIS	550/800				600/800	80	100	120	140	160	180
GP INOP	MDA(H)	305(132)		305(132)	305(132)	Time min:sec						
	VIS	1200		1600	2000	7:49	6:15	5:13	4:28	3:54	3:28	
CIRCLING	MDA(H)	A	365(191)	370(196)	410(236)	445(271)	Rate of descent m/s					
		B	1600	1600	3200	4400	2.2	2.7	3.2	3.8	4.3	4.8
						Note: A East of RWY B West of RWY Changes: Conversion table.						