

# STANDARD DEPARTURE CHART-INSTRUMENT

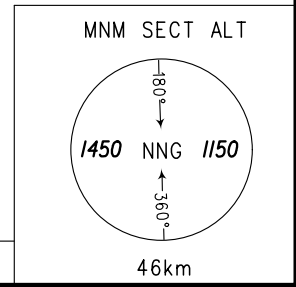
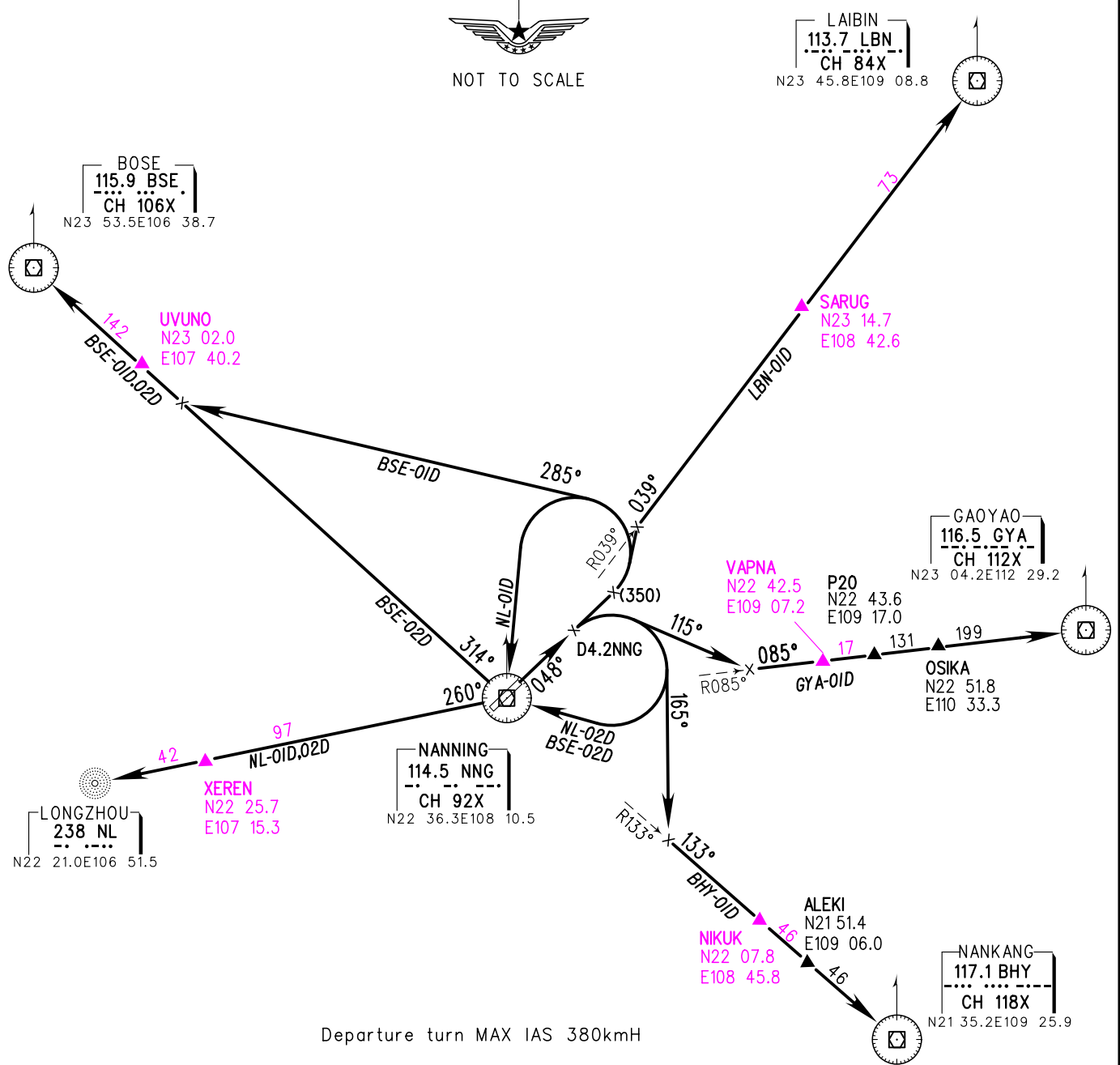
VAR1.7° W

ATIS 126.25  
APP 121.25(119.85)  
TWR 130.35(118.35,130.00)

ZGNN NANNING/Wuxu  
RWY05

BEARINGS ARE MAGNETIC  
ALTITUDES, ELEVATIONS  
AND HEIGHTS IN METERS  
DME DISTANCES IN  
NAUTICAL MILES  
DISTANCES IN KM

TL 3600  
TH (3000)



Changes: Add new fixes, APP FREQ.