

STANDARD DEPARTURE CHART-INSTRUMENT

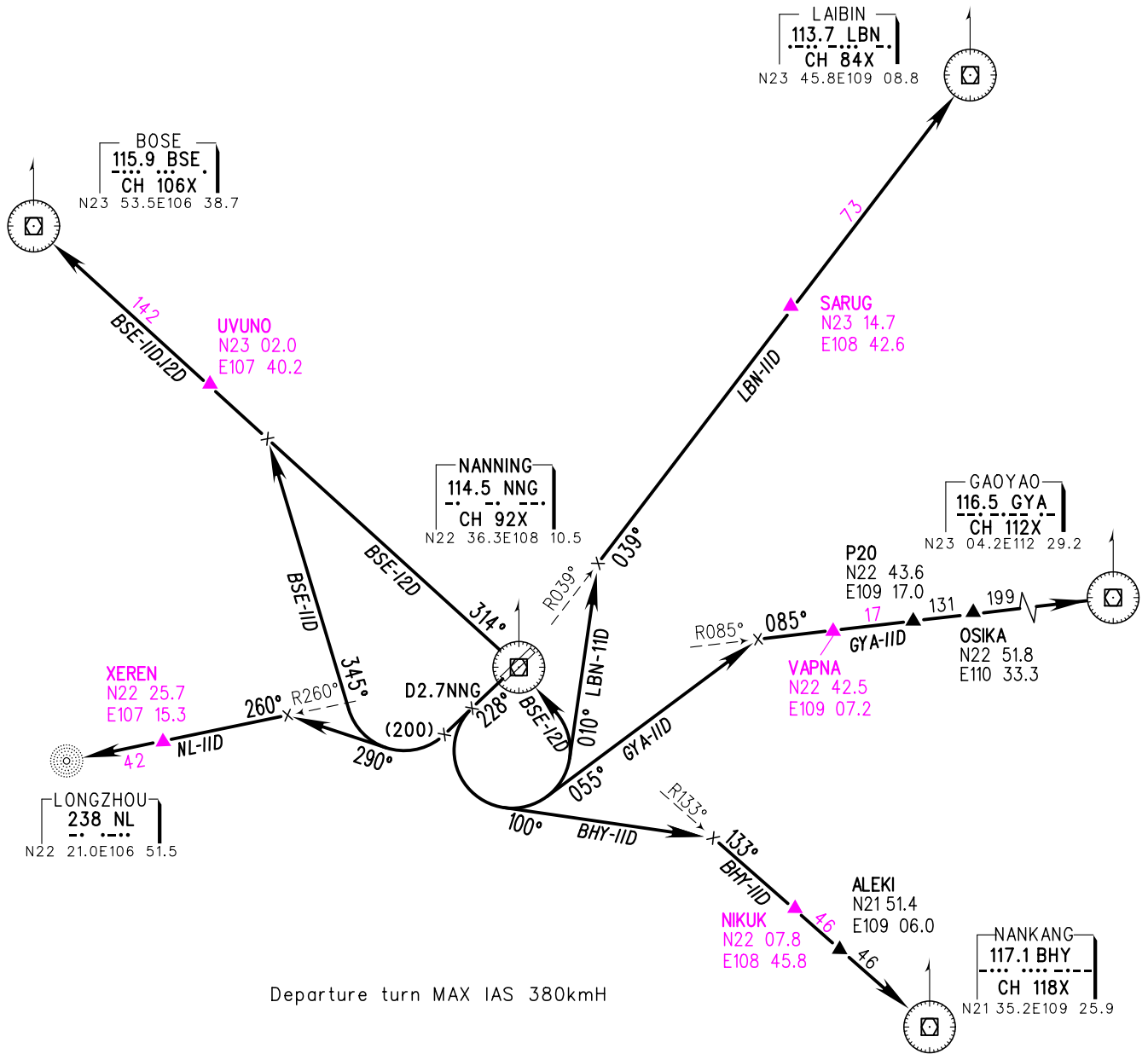
VAR1.7° W

ATIS 126.25
 APP 121.25(119.85)
 TWR 130.35(118.35,130.00)

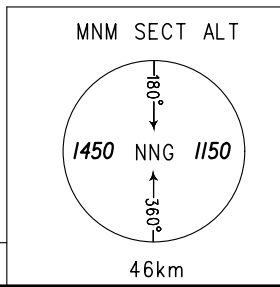
ZGNN NANNING/Wuxu RWY23

BEARINGS ARE MAGNETIC
 ALTITUDES, ELEVATIONS
 AND HEIGHTS IN METERS
 DME DISTANCES IN
 NAUTICAL MILES
 DISTANCES IN KM

TL 3600
 TH (3000)



Departure turn MAX IAS 380kmH



Changes: Add new flxs, APP FREQ.