

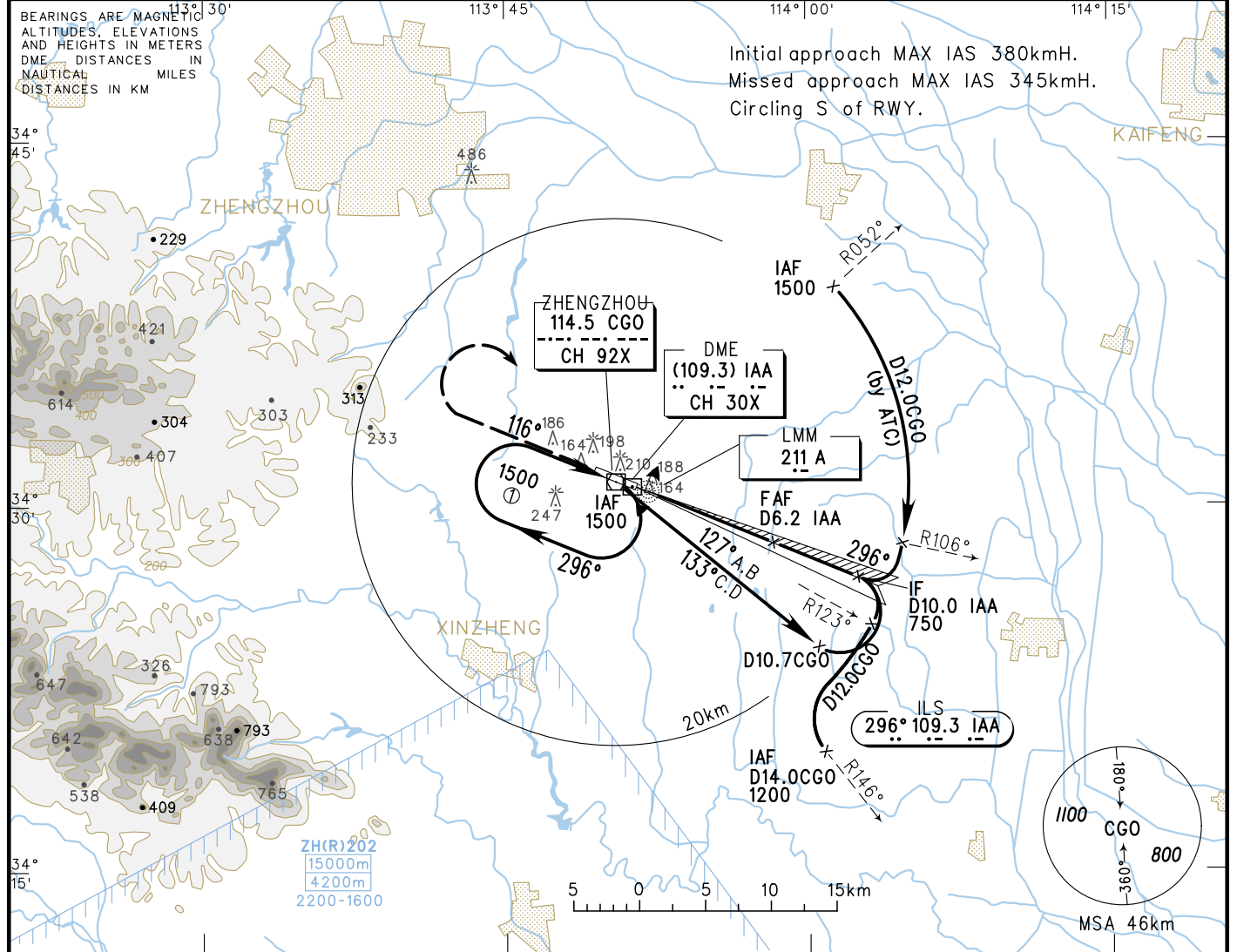
INSTRUMENT APPROACH CHART-ICAO

VAR 4° W

AERODROME ELEV 151m
 HEIGHTS RELATED TO THR RWY30 ELEV 148m

ATIS 128.45
 APP 119.9(124.2)
 TWR 118.3(118.85, 130.0)

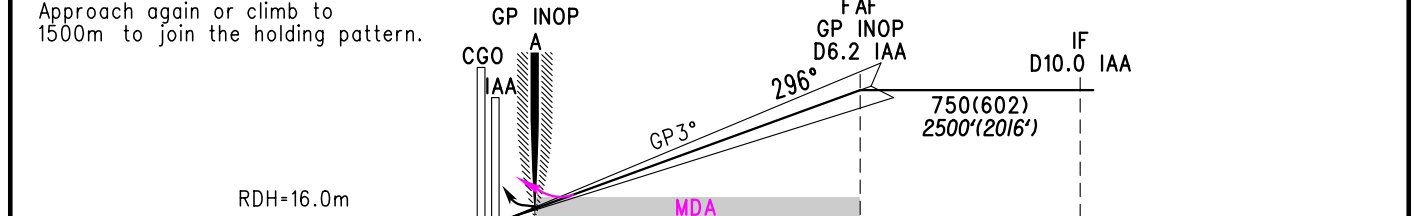
ZHCC ZHENGZHOU/Xinzheng
 ILS/DME RWY30



GP INOP	DME (IAA) (NM)	1	2	3	4	5	6	7
	ALT (m)			341	438	535	632	729

MISSED APPROACH
 Climb straight ahead to 450m, turn RIGHT inbound to CGO at 900m, and contact ATC. Approach again or climb to 1500m to join the holding pattern.

TL 3600
 TA 3000
 3300(QNH>1031HPA)
 2700(QNH<979HPA)



	A	B	C	D	FAF-MAPt(GP INOP) 10.2km					
					GS in kt	100	120	140	160	180
ILS/DME DA(H) RVR/VIS	208(60) 550/800		213(65) 550/800	218(70) 550/800	80	100	120	140	160	180
GP INOP MDA(H) VIS		250(102) 1100		250(102) 1200	150	185	220	260	295	335
					4:08	3:19	2:46	2:22	2:04	1:51
					Rate of descent m/s	2.2	2.7	3.2	3.8	4.3
CIRCLING MDA(H) VIS	300(149) 1600	340(189) 1600	370(219) 2800	370(219) 3600	Changes: Conversion table, CDFA, Chart renamed.					