

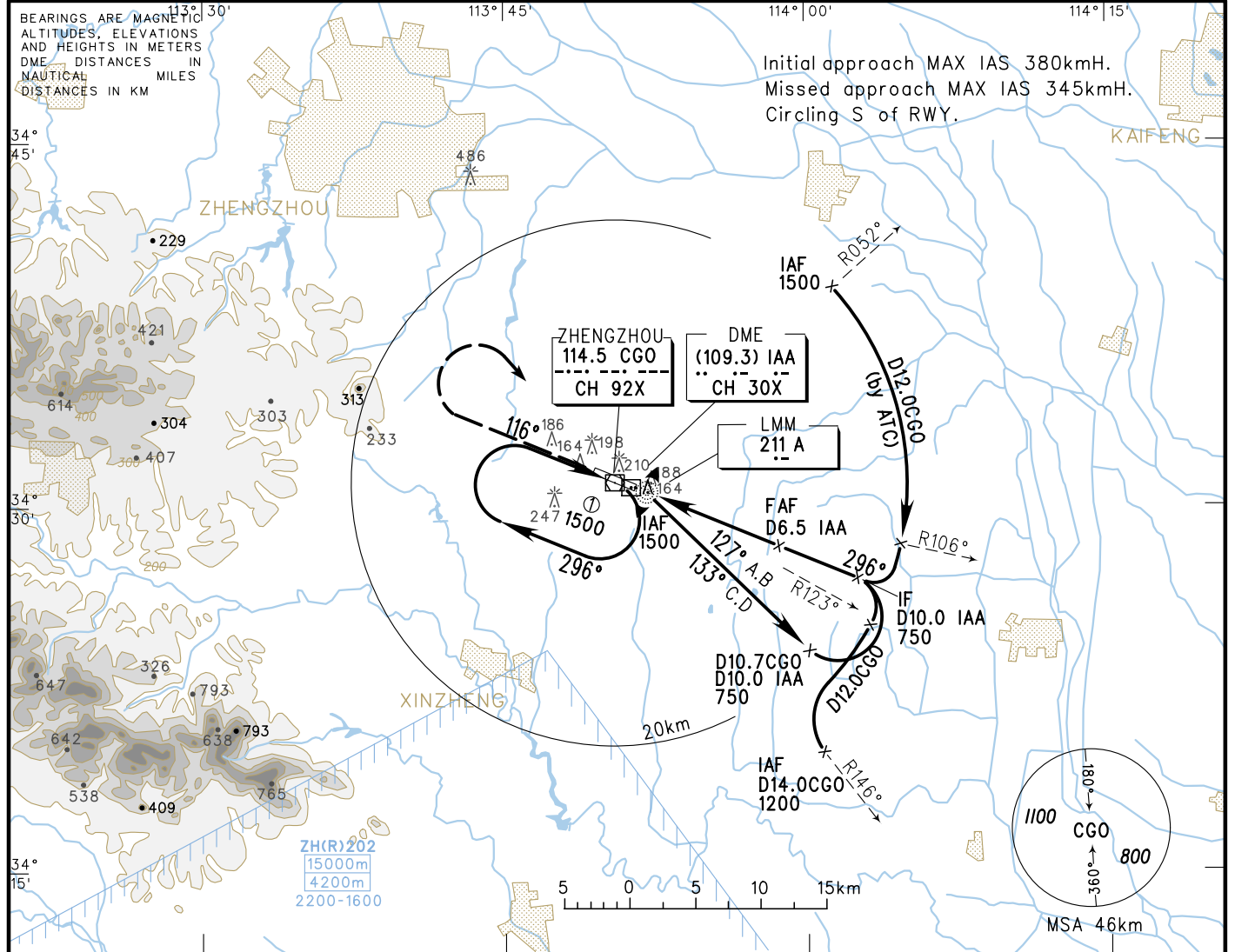
INSTRUMENT APPROACH CHART-ICAO

VAR 4° W

AERODROME ELEV 151m
 HEIGHTS RELATED TO THR RWY30 ELEV 148m

ATIS 128.45
 APP 119.9(124.2)
 TWR 118.3(118.85, 130.0)

ZHCC ZHENGZHOU/Xinzheng
 NDB/DME RWY30



MISSED APPROACH

Climb straight ahead to 450m, turn RIGHT inbound to CGO at 900m, and contact ATC. Approach again or climb to 1500m to join the holding pattern.

TL 3600
 TA 3000
 3300(QNH) > 1031HPA
 2700(QNH) < 979HPA

| NDB/DME | MDA(H) VIS | FAF-MAPT 10.7km | | | | FAF-MAPT 10.7km | | | |
|-----------------|-----------------------|------------------|------------------|------------------|------------------|-----------------|--------------|---------------------|--|
| | | A | B | C | D | GS in kt | Time min:sec | Rate of descent m/s | |
| | | 275(127) 1700 | | | | 80 | 4:20 | 2.1 | |
| | | | | | | 100 | 3:28 | 2.6 | |
| | | | | | | 120 | 2:54 | 3.1 | |
| | | | | | | 140 | 2:29 | 3.6 | |
| | | | | | | 160 | 2:10 | 4.2 | |
| | | | | | | 180 | 1:56 | 4.7 | |
| CIRCLING | MDA(H) VIS | 300(149) 1600 | 340(189) 1600 | 370(219) 2800 | 370(219) 3600 | | | | |

Changes: Conversion table, CDFA, Chart renamed.