

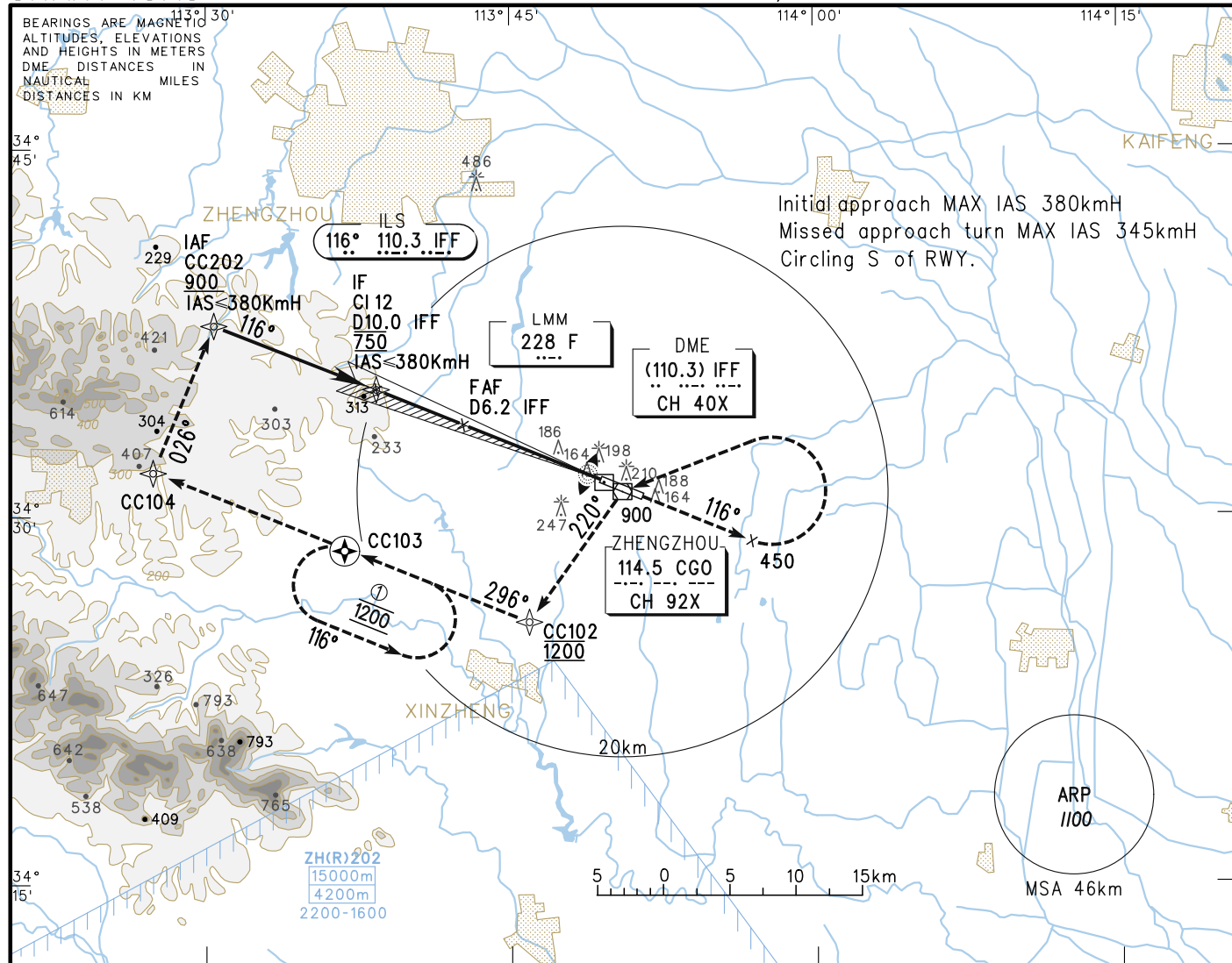
# INSTRUMENT APPROACH CHART-ICAO

VAR 4° W

AERODROME ELEV 151m  
 HEIGHTS RELATED TO THR RWY 12 ELEV 151m

ATIS 128.45  
 APP 119.9(124.2)  
 TWR 118.3(118.85, 130.0)

**ZHCC ZHENGZHOU/Xinzheng**  
 RNAV ILS/DME RWY12

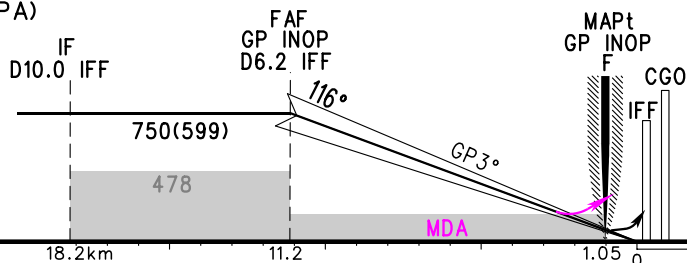


GP INOP	DME (IFF) (NM)	7	6	5	4	3	2	1
	ALT (m)		731	634	538	441	344	

TL 3600  
 TA 3000  
 3300(QNH>1031HPA)  
 2700(QNH<979HPA)

### MISSED APPROACH

Climb straight ahead to 450, turn LEFT inbound to CGO at 900, conventional approach again, or inbound to CC102 at 1200 and then join approach procedure, or join holding pattern at CC103 and then contact ATC.



RDH=15.6m

	A	B	C	D	FAF-MAPt(GP INOP) 10.15km							
ILS/DME DA(H) RVR/VIS	211(60) 550/800		216(65) 550/800		GS in kt	80	100	120	140	160	180	335
GP INOP MDA(H) VIS	280(129) 1600				Time min:sec	4:07	3:18	2:45	2:21	2:04	1:50	
CIRCLING MDA(H) VIS	300(149) 1600	340(189) 1600	370(219) 2800	370(219) 3600	Rate of descent m/s	2.2	2.7	3.2	3.8	4.3	4.9	

Changes: Conversion table, CDF A, Chart renamed.