

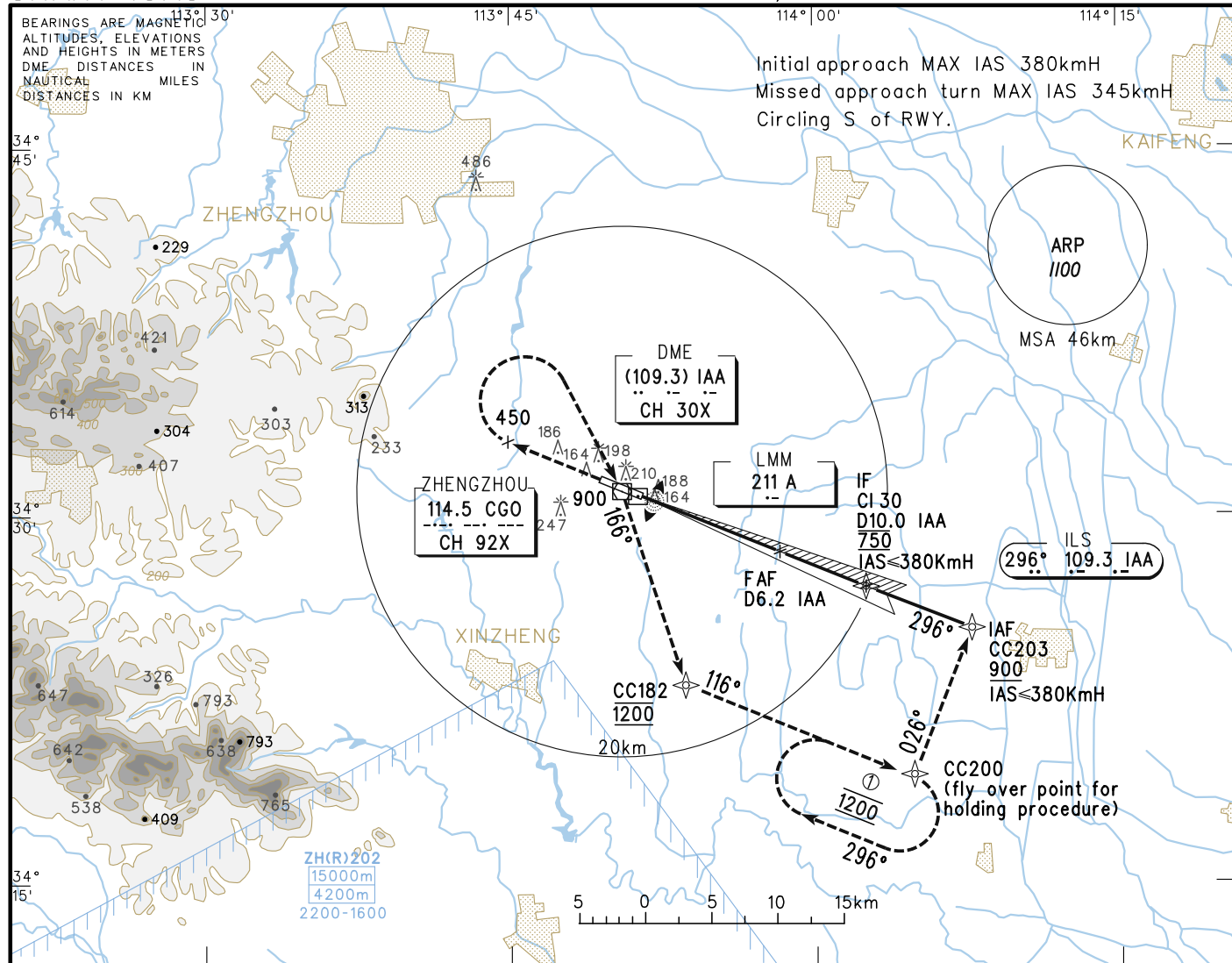
# INSTRUMENT APPROACH CHART-ICAO

VAR 4° W

AERODROME ELEV 151m  
 HEIGHTS RELATED TO THR Rwy 30 ELEV 148m

ATIS 128.45  
 APP 119.9(124.2)  
 TWR 118.3(118.85, 130.0)

**ZHCC ZHENGZHOU/Xinzheng**  
 RNAV ILS/DME Rwy30



**MISSED APPROACH**

Climb straight ahead to 450, turn RIGHT inbound to CGO at 900, conventional approach again, or inbound to CC182 at 1200 and then join approach procedure, or join holding pattern at CC200 and then contact ATC.

TL 3600  
 TA 3000  
 3300(QNH>1031HPA)  
 2700(QNH<979HPA)

	A	B	C	D	FAF-MAPt(GP INOP) 10.2km						
					GS in kt	100	120	140	160	180	
ILS/DME DA(H) RVR/VIS	208(60) 550/800	213(65) 550/800	218(70) 550/800		80	100	120	140	160	180	
GP INOP MDA(H) VIS		250(102) 1100		250(102) 1200	150	185	220	260	295	335	
CIRCLING MDA(H) VIS	300(149) 1600	340(189) 1600	370(219) 2800	370(219) 3600							
					Time min:sec	4:08	3:19	2:46	2:22	2:04	1:51
					Rate of descent m/s	2.2	2.7	3.2	3.8	4.3	4.9

Changes: Conversion table, CDFA, Chart renamed.