

# STANDARD DEPARTURE CHART-INSTRUMENT

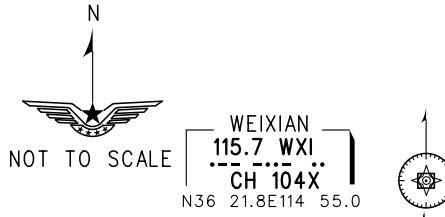
VAR4° W  
 ATIS 128.45  
 APP 119.9(124.2)  
 TWR 118.3(118.85, 130.0)

ZHCC ZHENGZHOU/Xinzheng  
 RNAV Rwy30

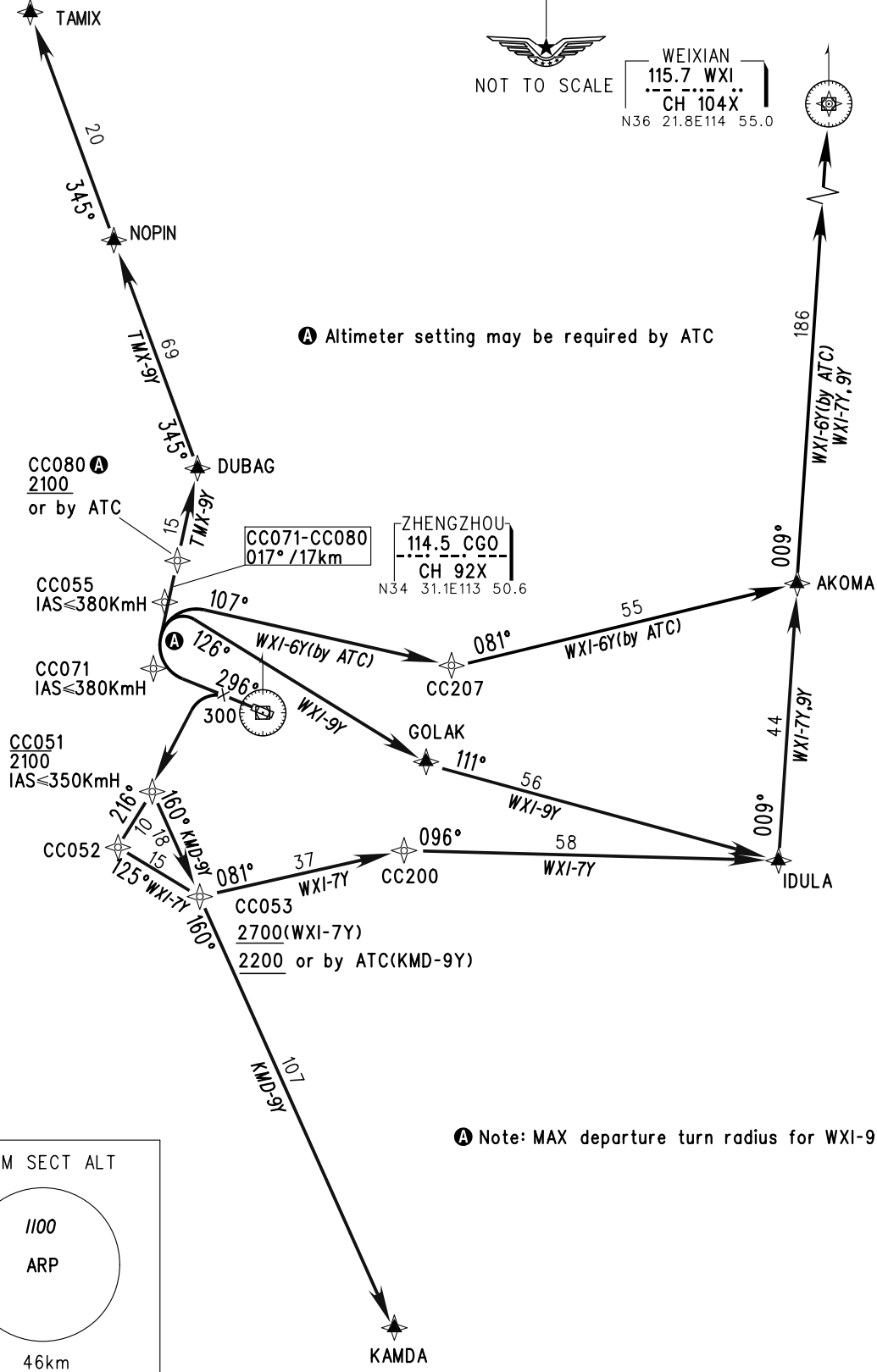
BEARINGS ARE MAGNETIC  
 ALTITUDES, ELEVATIONS  
 AND HEIGHTS IN METERS  
 DME DISTANCES IN  
 NAUTICAL MILES  
 DISTANCES IN KM

TL 3600  
 TA 3000  
 3300(QNH>1031HPA)  
 2700(QNH<979HPA)

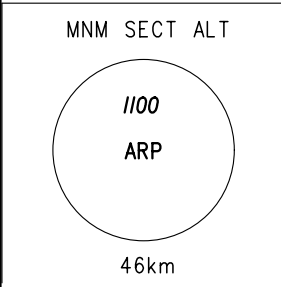
1. RNAV 1
2. GNSS REQUIRED
3. RADAR REQUIRED



Ⓐ Altimeter setting may be required by ATC



Ⓐ Note: MAX departure turn radius for WXI-9Y is 5km.



Changes: New chart.