

STANDARD DEPARTURE CHART-INSTRUMENT

VAR4° W
 ATIS 128.45
 APP 119.9(124.2)
 TWR 118.3(118.85, 130.0)

ZHCC ZHENGZHOU/Xinzheng
 RWY12

BEARINGS ARE MAGNETIC
 ALTITUDES, ELEVATIONS
 AND HEIGHTS IN METERS
 DME DISTANCES IN
 NAUTICAL MILES
 DISTANCES IN KM

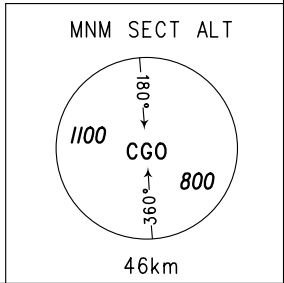
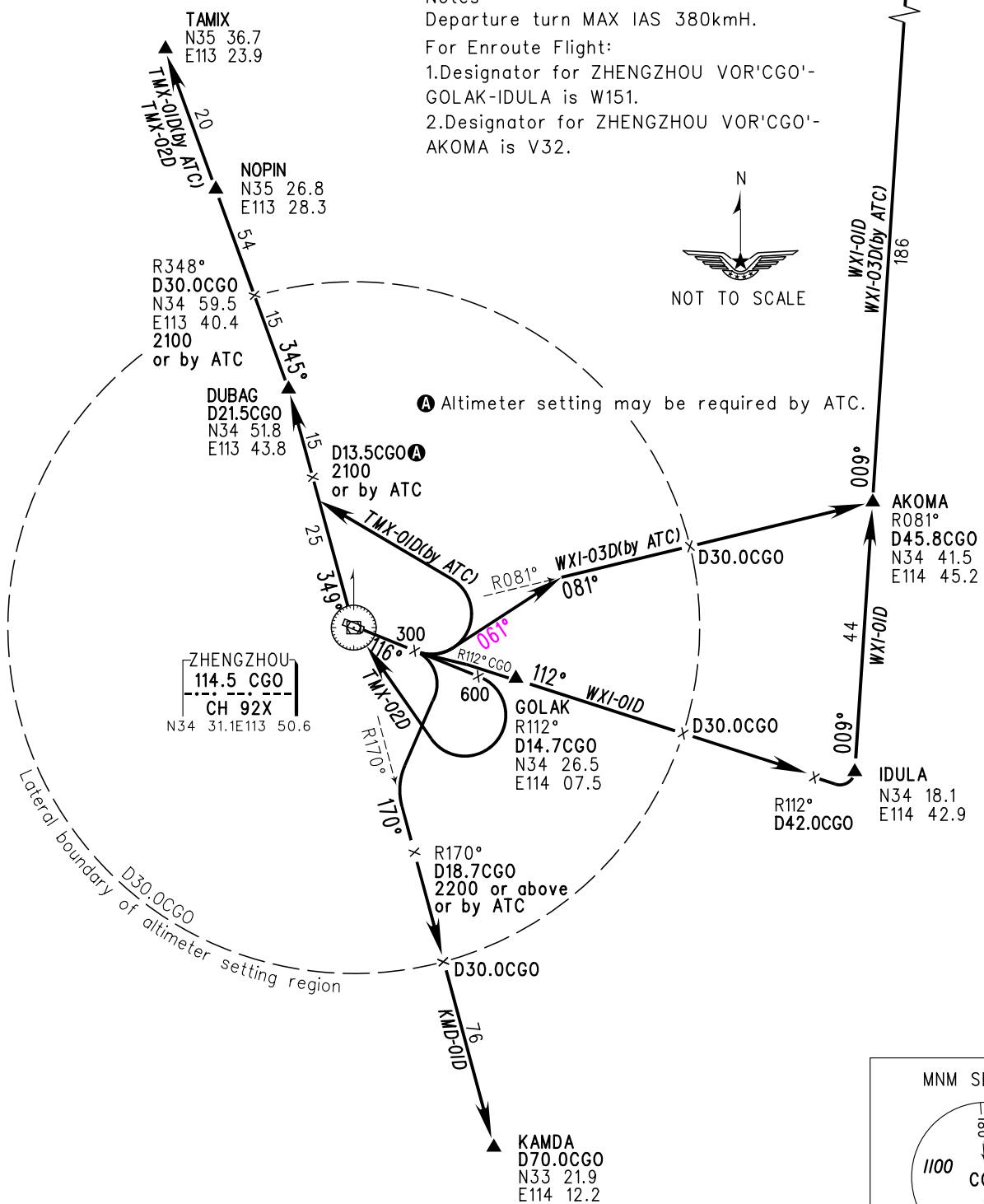
TL 3600
 TA 3000
 3300(QNH≥1031HPA)
 2700(QNH<979HPA)

WEIXIAN
 115.7 WXI
 CH 104X
 N36 21.8E114 55.0

Notes:
 Departure turn MAX IAS 380kmH.
 For Enroute Flight:
 1.Designator for ZHENGZHOU VOR'CGO'-
 GOLAK-IDULA is W151.
 2.Designator for ZHENGZHOU VOR'CGO'-
 AKOMA is V32.



Ⓐ Altimeter setting may be required by ATC.



Changes: Departure angle.