

# STANDARD DEPARTURE CHART-INSTRUMENT

VAR4° W  
 ATIS 128.45  
 APP 119.9(124.2)  
 TWR 118.3(118.85, 130.0)

ZHCC ZHENGZHOU/Xinzheng  
 RWY30

BEARINGS ARE MAGNETIC  
 ALTITUDES, ELEVATIONS  
 AND HEIGHTS IN METERS  
 DME DISTANCES IN  
 NAUTICAL MILES  
 DISTANCES IN KM

TL 3600  
 TA 3000  
 3300(QNH>1031HPA)  
 2700(QNH<979HPA)

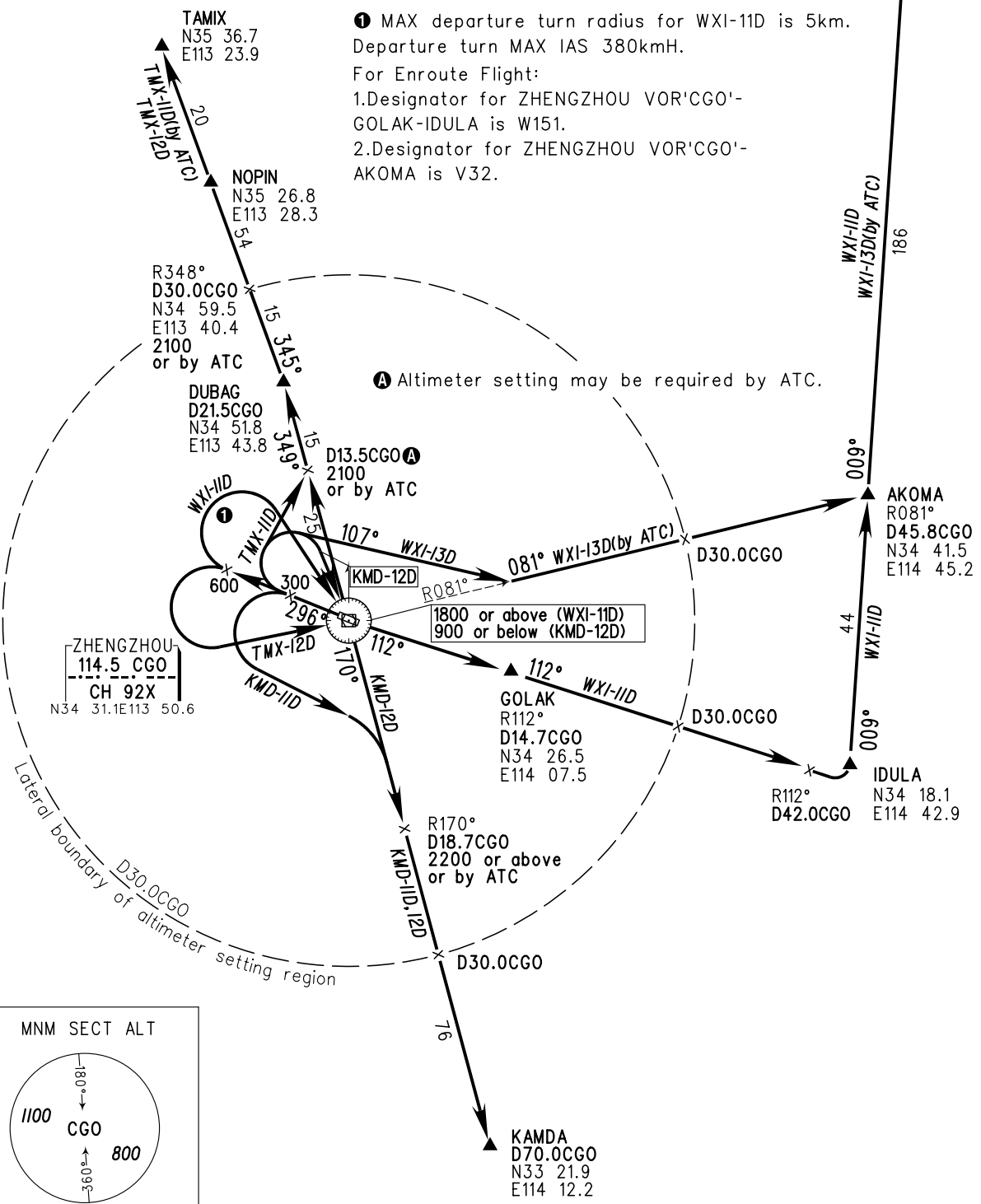


WEIXIAN  
 115.7 WXI  
 CH 104X  
 N36 21.8E114 55.0

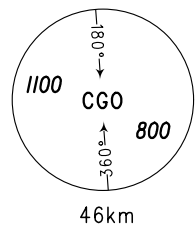
Notes:  
 1. MAX departure turn radius for WXI-11D is 5km.  
 Departure turn MAX IAS 380kmH.  
 For Enroute Flight:  
 1.Designator for ZHENGZHOU VOR'CGO'-  
 GOLAK-IDULA is W151.  
 2.Designator for ZHENGZHOU VOR'CGO'-  
 AKOMA is V32.

A Altimeter setting may be required by ATC.

1800 or above (WXI-11D)  
 900 or below (KMD-12D)



MNM SECT ALT



Changes: Nil.