

STANDARD ARRIVAL CHART-INSTRUMENT

VAR 4° W
 ATIS 128.45
 APP 119.9(124.2)
 TWR 118.3(118.85, 130.0)

ZHCC ZHENGZHOU/Xinzheng
 RWY12

BEARINGS ARE MAGNETIC
 ALTITUDES, ELEVATIONS
 AND HEIGHTS IN METERS
 DME DISTANCES IN
 NAUTICAL MILES
 DISTANCES IN KM

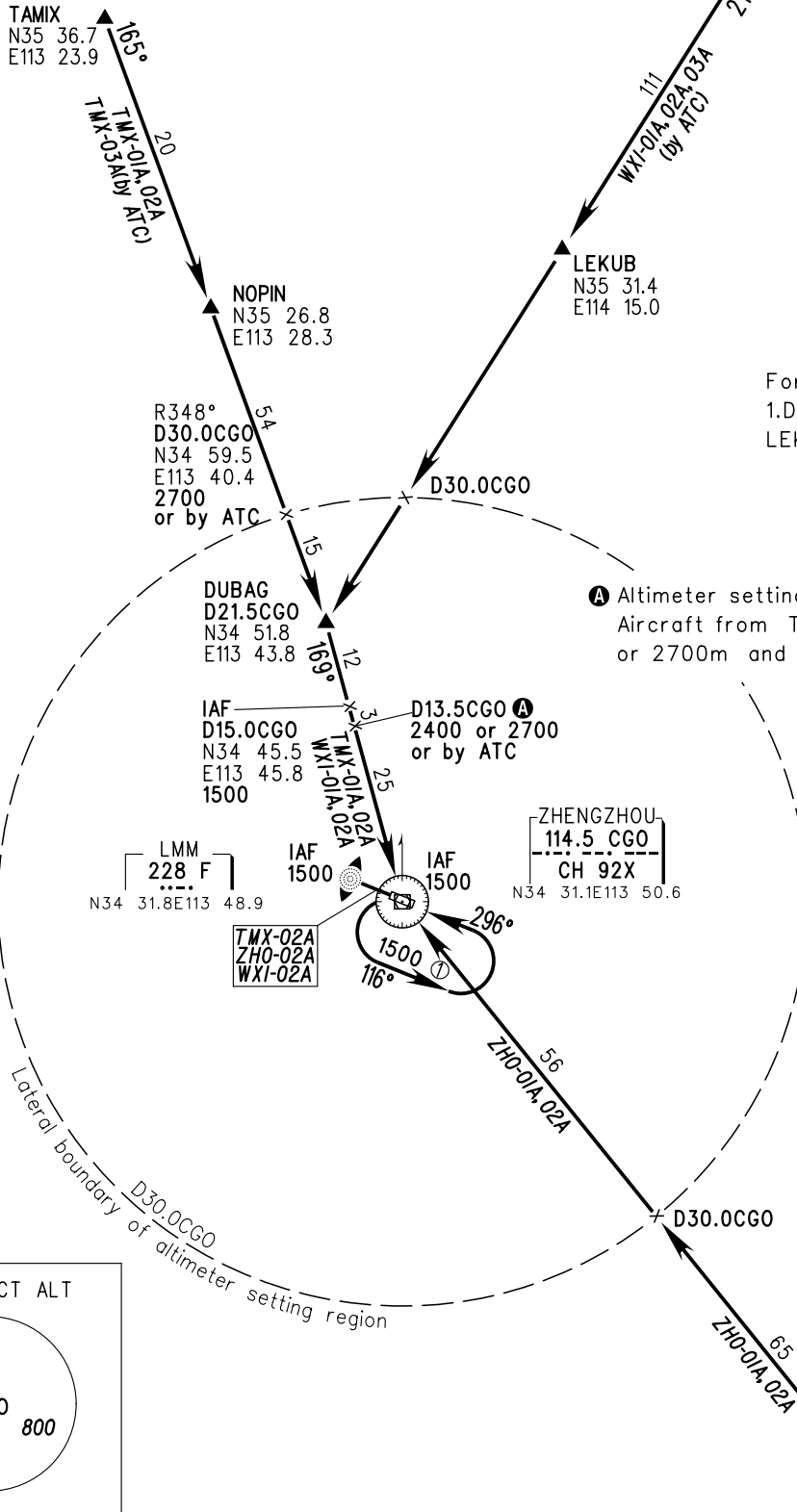
TL 3600
 TA 3000
 3300(QNH>1031HPA)
 2700(QNH<979HPA)

WEIXIAN
 115.7 WXI
 CH 104X
 N36 21.8E114 55.0

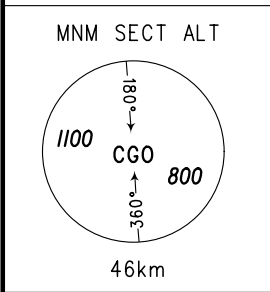


For Enroute Flight:
 1.Designator for WEIXIAN VOR'WXI'-
 LEKUB-DUBAG is V33.

Ⓐ Altimeter setting may be required by ATC:
 Aircraft from TAMIX shall descend to 2400m
 or 2700m and keep altitude to D13.5CGO.



Lateral boundary of altimeter setting region



Changes: Procedures.