

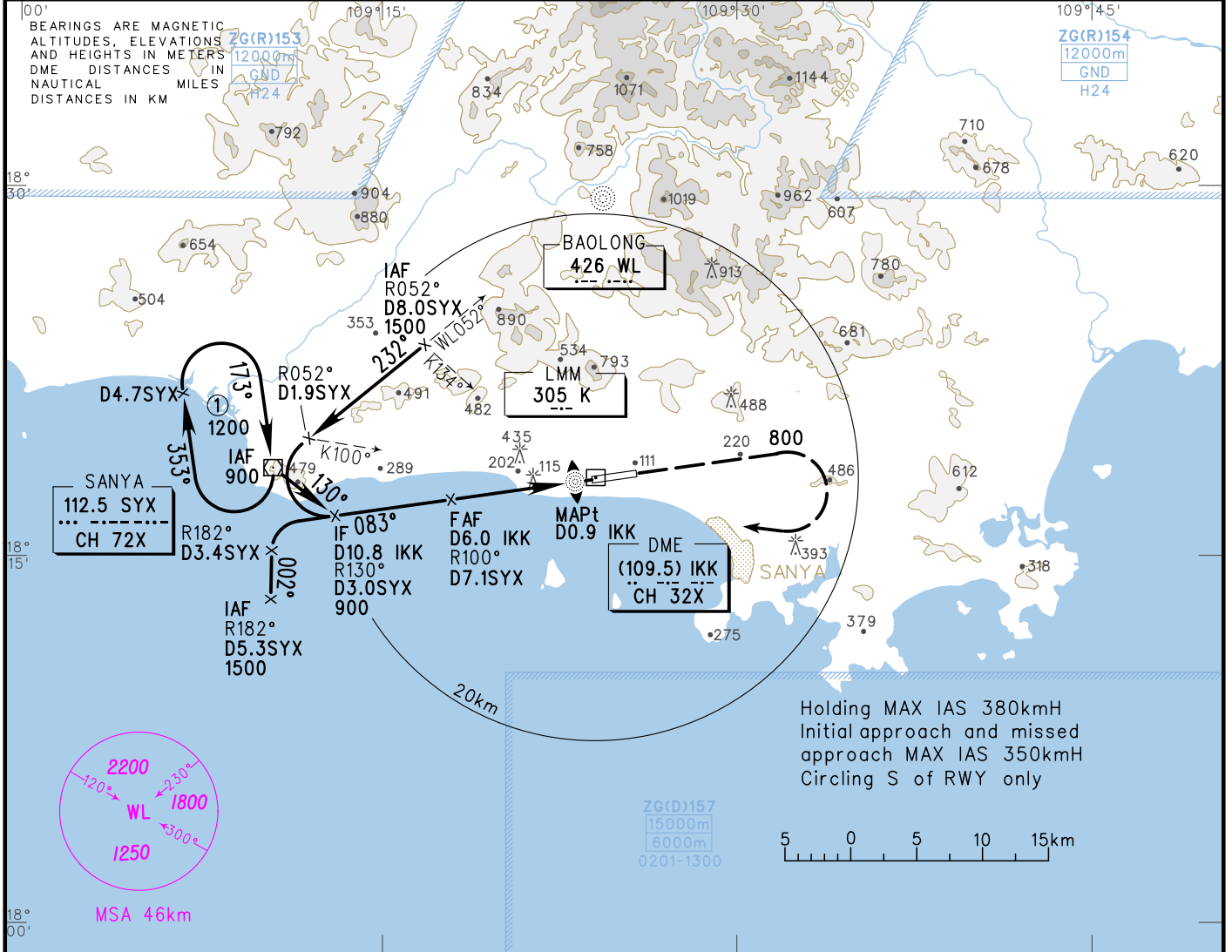
# INSTRUMENT APPROACH CHART-ICAO

VAR1°

AERODROME ELEV 29  
HEIGHTS RELATED TO  
THR RWY 08 ELEV 19

ATIS 126.45  
TWR 118.15(118.85)  
APP 125.55(119.25)

**ZJSY SANYA/Phoenix**  
NDB/DME RWY08

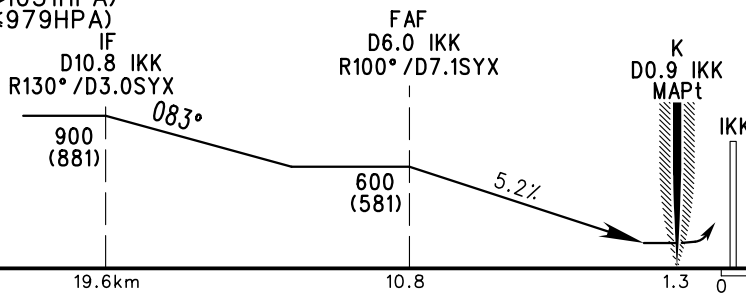


DME (IKK) (NM)	8	7	6	5	4	3	2	1
ALT (m)			596	500	403	307		

TL 3600  
TA 3000  
3300(QNH ≥ 10.31HPA)  
2700(QNH ≤ 979HPA)

### MISSED APPROACH

Climb straight ahead to 800, turn RIGHT inbound to K at 1200, then inbound to SYX on track 273°, or by ATC.



NDB/DME	MDA(H) VIS	A	B	C	D	FAF-MAPt 9.5km						
		485(466) 2000	485(466) 2400	485(466) 4000	485(466) 4400	GS in kt	80	100	120	140	160	180
CIRCLING	MDA(H) VIS	485(456) 5400				kt	150	185	220	260	295	335
		Time min:sec	3:51	3:05	2:34	2:12	1:55	1:43				
						Rate of descent m/s	2.2	2.7	3.2	3.8	4.3	4.8

Changes: Conversion table, MSA.