

STANDARD DEPARTURE CHART-INSTRUMENT

VAR2° W

ATIS 126.85
TWR 118.5(124.35)

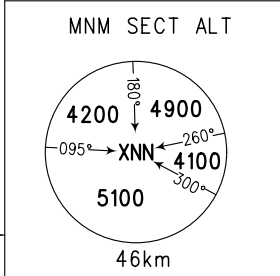
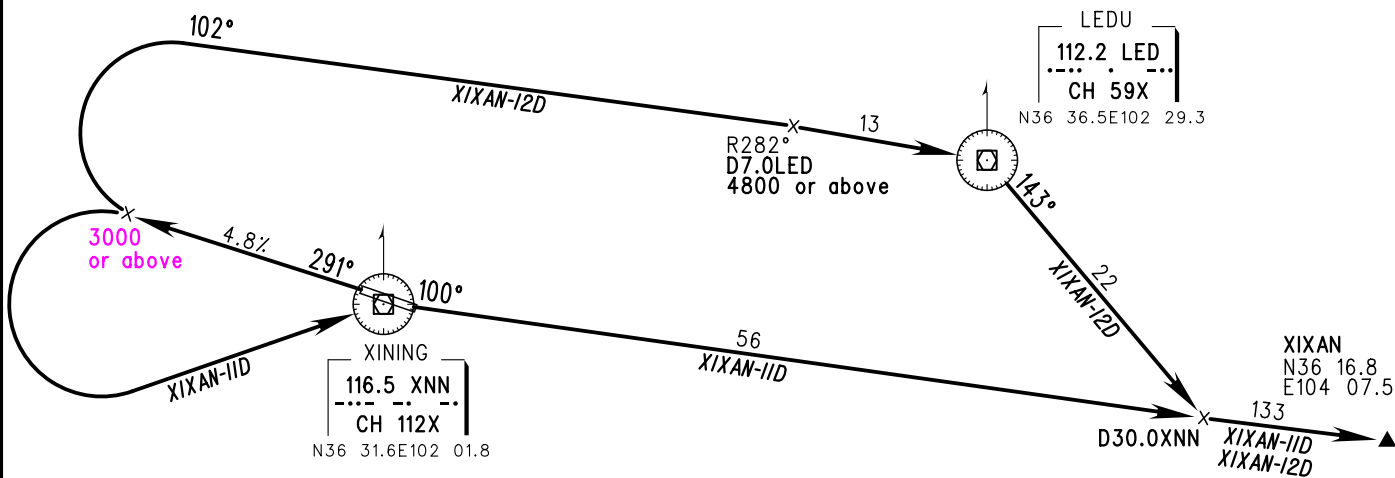
ZLXN XINING/Caojiapu
RWY29

BEARINGS ARE MAGNETIC
ALTITUDES, ELEVATIONS
AND HEIGHTS IN METERS
DME DISTANCES IN
NAUTICAL MILES
DISTANCES IN KM



TL 5400
TA 4800
5100 (QNH ≥ 1031HPA)
4500 (QNH ≤ 979HPA)

Departure MAX IAS 380kmH



Changes: Altitude lmlts.