

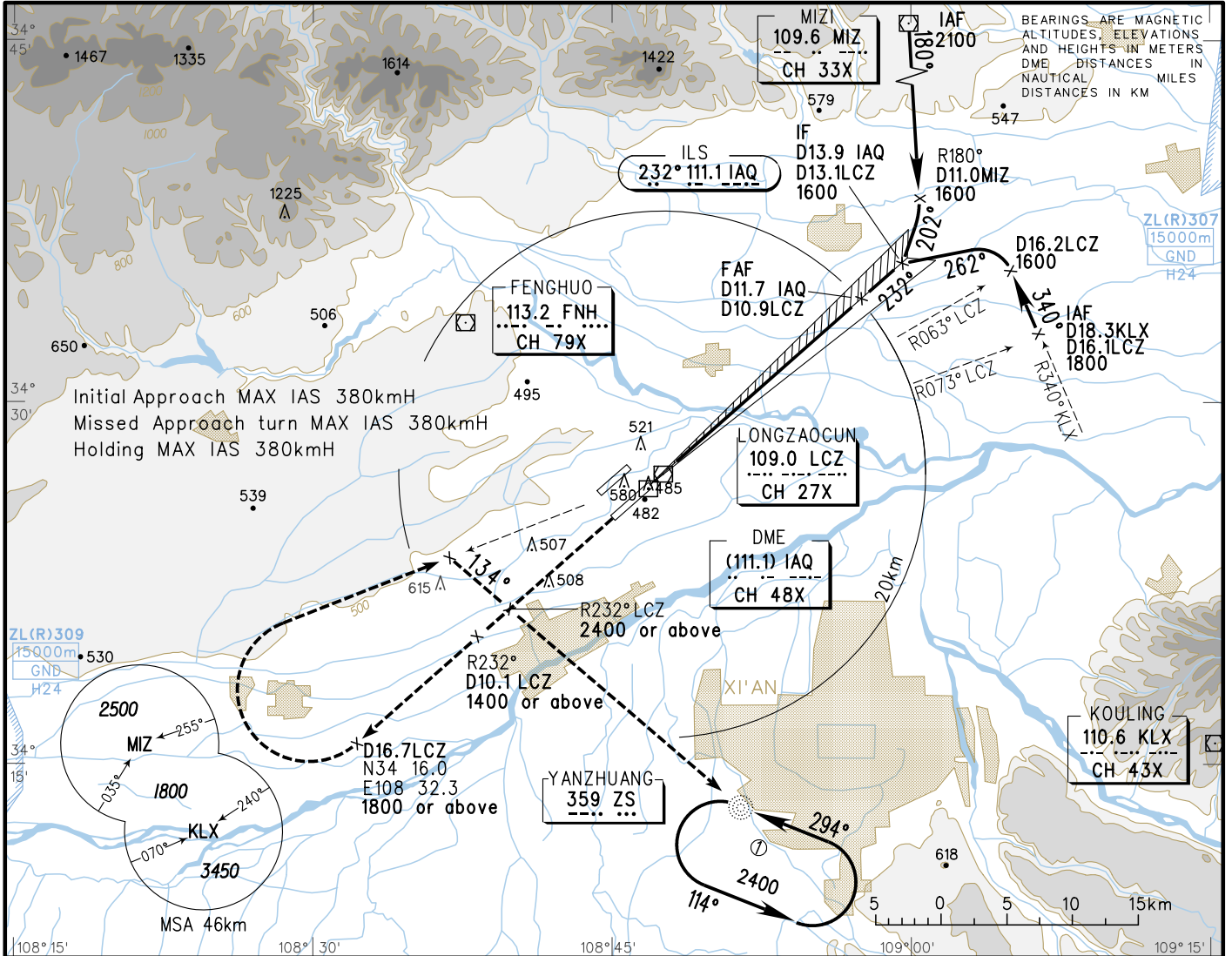
INSTRUMENT APPROACH CHART-ICAO

VAR3°W

AERODROME ELEV 479
HEIGHTS RELATED TO THR RWY23L ELEV 469

ATIS 127.45
D-ATIS 131.45
AP01 125.1(126.55)
AP02 119.05(123.85)
AP03 119.6(126.55)
AP04 119.9(121.4)
TWR(S) 130.45(118.15)

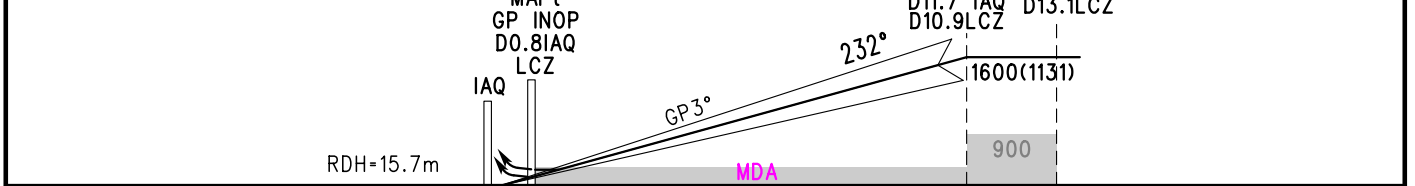
ZLXY XI'AN/Xianyang
ILS/DME RWY23L



GP INOP	DME (IAQ) (NM)	1	3	5	7	9	11
	ALT (m)		760	953	1147	1342	1537

MISSED APPROACH
Climb straight ahead to D10.1LCZ at 1400m or above, then to D16.7LCZ at 1800 or above and turn RIGHT, fly inbound to LCZ, then turn RIGHT to intercept ZS134°, 2400m or above at R232°LCZ/ZS134°, contact ATC over ZS.

TL 3600
TA 3000
3300(QNH≥1031HPA)
2700(QNH≤979HPA)



	A	A	B	C	D	FAF-MAPt(GP INOP) 20.1km						
						GS in kt	150	185	220	260	295	335
ILS/DME DA(H) RVR/VIS	5.5%		529(60)	550/800		80	100	120	140	160	180	
	3%		800(330)	5000		150	185	220	260	295	335	
GP INOP MDA(H) VIS	5%		570(101)	1200		8:08	6:31	5:26	4:39	4:04	3:37	
	3%		910(440)	5000		Rate of descent m/s	2.2	2.7	3.2	3.8	4.3	4.9
CIRCLING MDA(H) VIS			700(221)	4000		Note: A Missed approach climb gradient.						
						Changes: Landing minima, AP04.						