

INSTRUMENT APPROACH CHART-ICAO

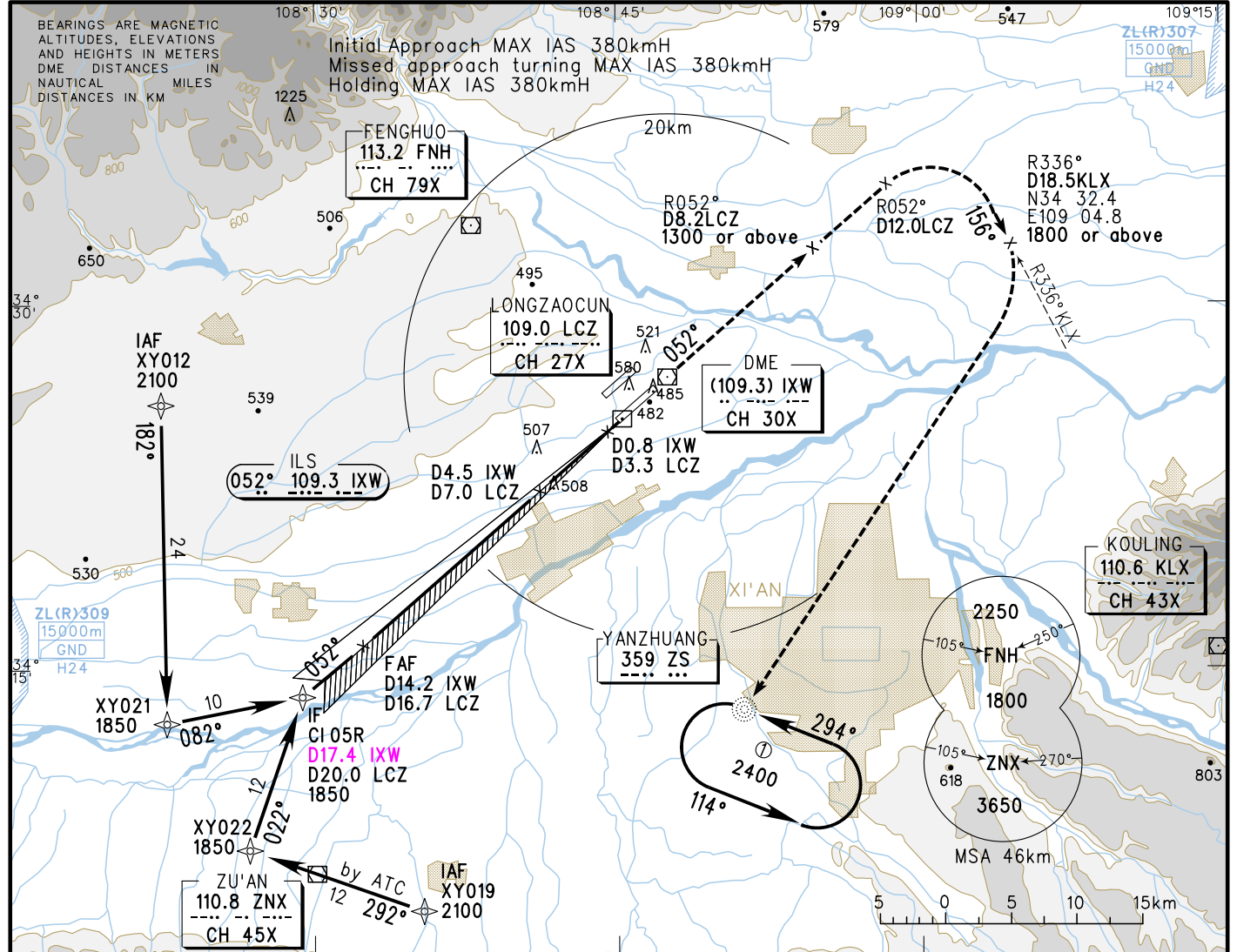
VAR3° W

AERODROME ELEV 479
 HEIGHTS RELATED TO AP04 119.9(121.4)
 THR RWY05R ELEV 474 TWR(S) 130.45(118.15)

ATIS 127.45
 D-ATIS 131.45
 AP01 125.1(126.55)
 AP02 119.05(123.85)
 AP03 119.6(126.55)
 AP04 119.9(121.4)
 TWR(S) 130.45(118.15)

ZLXY XI'AN/Xianyang

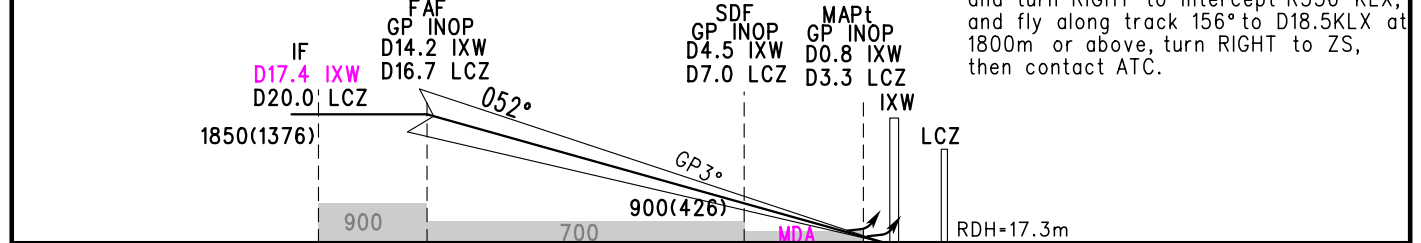
RNAV ILS/DME RWY05R



GP INOP	DME (IXW) (NM)	14	12	10	8	6	4	2
	ALT (m)	1833	1639	1445	1251	1057	864	670

TL 3600
 TA 3000
 3300(QNH>1031HPA)
 2700(QNH<979HPA)

MISSED APPROACH
 Climb straight ahead to D8.2LCZ at 1300m or above, then to D12.0LCZ, and turn RIGHT to intercept R336°KLX, and fly along track 156° to D18.5KLX at 1800m or above, turn RIGHT to ZS, then contact ATC.



	A	A	B	C	D	FAF-MAPt(GP INOP) 24.8km					
						GS in kt	100	120	140	160	180
ILS/DME DA(H) RVR/VIS	4.5%		534(60)	550/800		80	100	120	140	160	180
	3%		705(230)	3500		150	185	220	260	295	335
GP INOP MDA(H) VIS	3.7%		600(126)	1500							
	3%		730(256)	4000							
CIRCLING MDA(H) VIS			700(221)	4000							
			4000								
Time min:sec						10:03	8:02	6:42	5:44	5:01	4:28
Rate of descent m/s						2.2	2.7	3.2	3.8	4.3	4.9

Note: A Missed approach climb gradient.
 Changes: Landing minima AP04.