

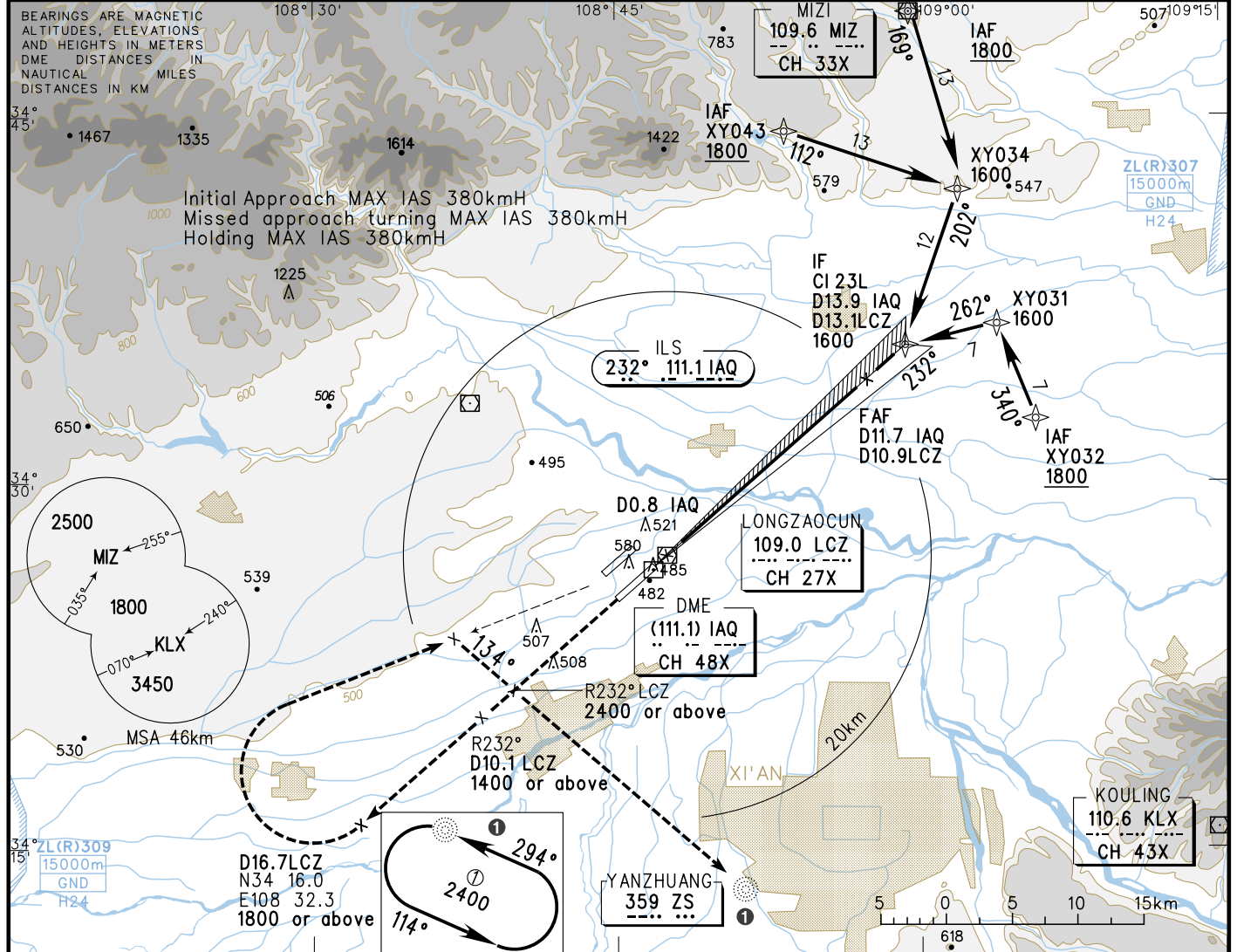
INSTRUMENT APPROACH CHART-ICAO

VAR3°W

AERODROME ELEV 479
HEIGHTS RELATED TO THR RWY23L ELEV 469

ATIS 127.45
D-ATIS 131.45
AP01 125.1(126.55)
AP02 119.05(123.85)
AP03 119.6(126.55)
AP04 119.9(121.4)
TWR(S) 130.45(118.15)

ZLXY XI'AN/Xianyang
RNAV ILS/DME RWY23L

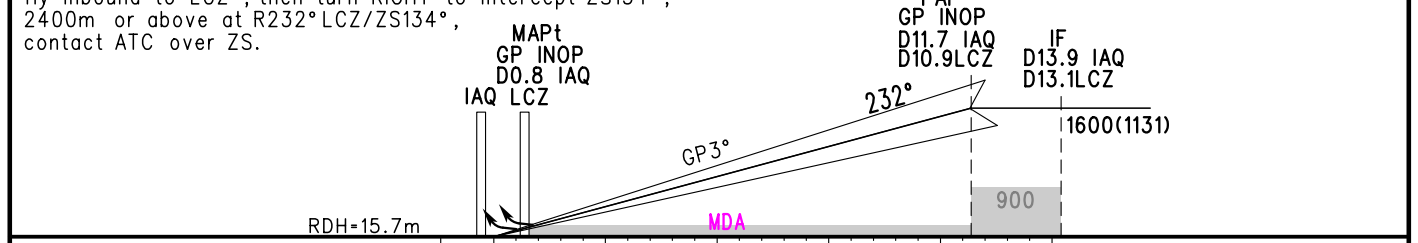


GP INOP	DME (IAQ) (NM)	1	3	5	7	9	11	13
	ALT (m)			760	953	1147	1342	1537

MISSED APPROACH

Climb straight ahead to D10.1LCZ at 1400m or above, then to D16.7LCZ at 1800 or above and turn RIGHT, fly inbound to LCZ, then turn RIGHT to intercept ZS134°, 2400m or above at R232° LCZ/ZS134°, contact ATC over ZS.

TL 3600
TA 3000
3300(QNH>1031HPA)
2700(QNH<=979HPA)



ILS/DME	DA(H) RVR/VIS	A	B	C	D	FAF-MAPt(GP INOP) 20.1km						
		5.5%	529(60) 550/800					GS in kt	80	100	120	140
3%	800(330) 5000					kmH	150	185	220	260	295	335
GP INOP	MDA(H) VIS	5%	570(101) 1200			Time min:sec	8:08	6:31	5:26	4:39	4:04	3:37
		3%	910(440) 5000			Rate of descent m/s	2.2	2.7	3.2	3.8	4.3	4.9
CIRCLING	MDA(H) VIS		700(221) 4000			Note: A Missed approach climb gradient.						
						Changes: Landing minma. AP04.						