

ATIS 128.65(DEP)
 D-ATIS 131.45
 AP01/04 125.1(126.55)
 AP02 119.05(123.85)
 AP03 119.6(126.55)
 TWR(N) 124.3(118.15)
 TWR(S) 130.45(118.15)

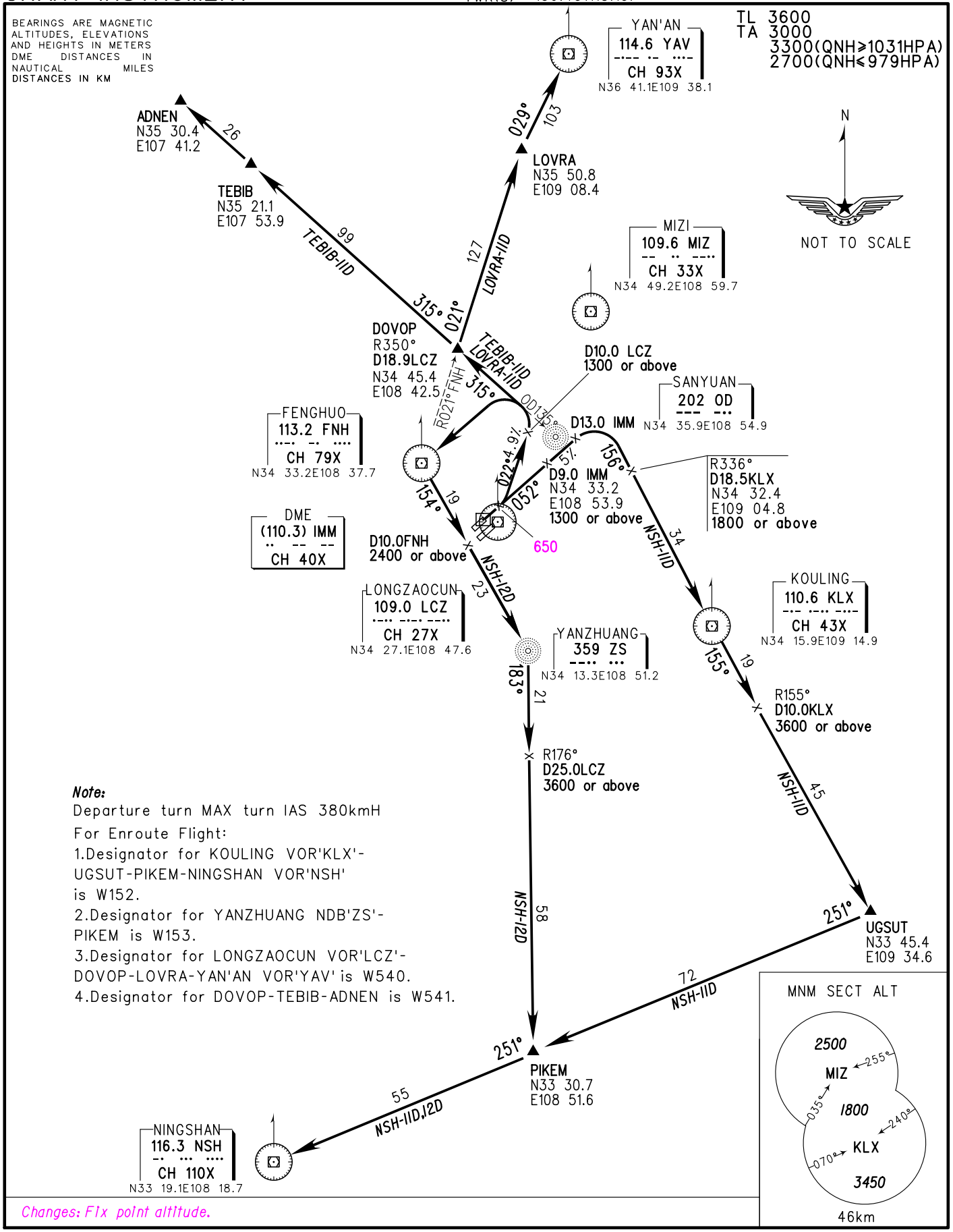
**STANDARD DEPARTURE
 CHART-INSTRUMENT**

VAR 3° W

ZLXY XI'AN/Xianyang
 RWY05L

BEARINGS ARE MAGNETIC
 ALTITUDES, ELEVATIONS
 AND HEIGHTS IN METERS
 DME DISTANCES IN
 NAUTICAL MILES
 DISTANCES IN KM

TL 3600
 TA 3000
 3300(QNH≥1031HPA)
 2700(QNH≤979HPA)



Changes: Flx point altitude.