

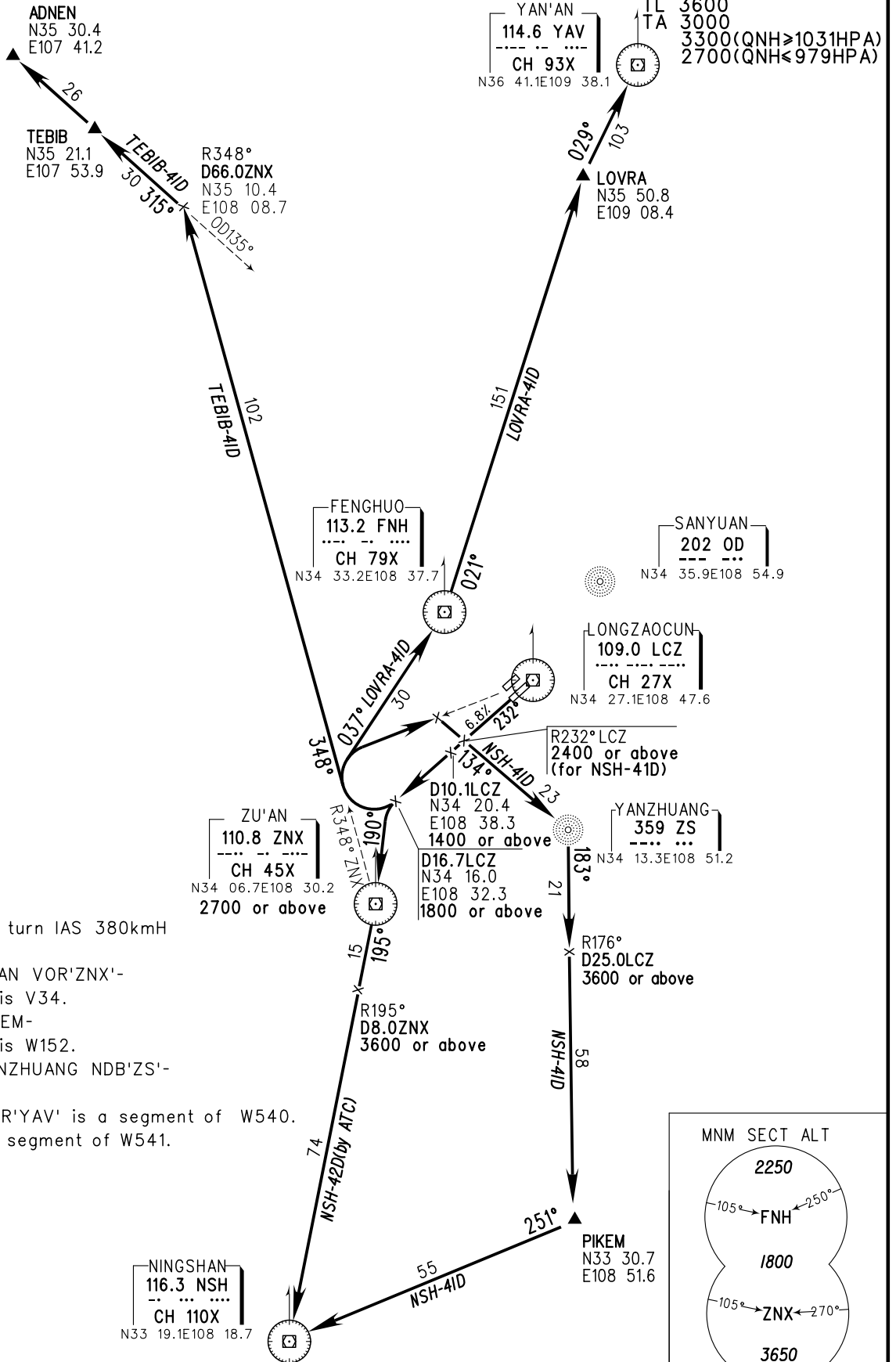
ATIS 128.65(DEP)
 D-ATIS 131.45
 AP01/04 125.1(126.55)
 AP02 119.05(123.85)
 AP03 119.6(126.55)
 TWR(N) 124.3(118.15)
 TWR(S) 130.45(118.15)

ZLXY XI'AN/Xianyang
 RWY23L

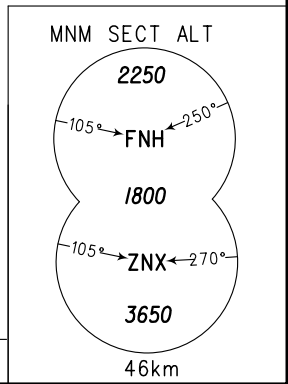
STANDARD DEPARTURE
CHART-INSTRUMENT

VAR3° W

BEARINGS ARE MAGNETIC
 ALTITUDES, ELEVATIONS
 AND HEIGHTS IN METERS
 DME DISTANCES IN
 NAUTICAL MILES
 DISTANCES IN KM



Note:
 Departure turn MAX turn IAS 380kmH
 For Enroute Flight:
 1.Designator for ZU'AN VOR'ZNX'-
 NINGSHAN VOR'NSH' is V34.
 2.Designator for PIKEM-
 NINGSHAN VOR'NSH' is W152.
 3.Designator for YANZHUANG NDB'ZS'-
 PIKEM is W153.
 4.LOVRA-YAN'AN VOR'YAV' is a segment of W540.
 5.TEBIB-ADNEN is a segment of W541.



Changes: Nil.