

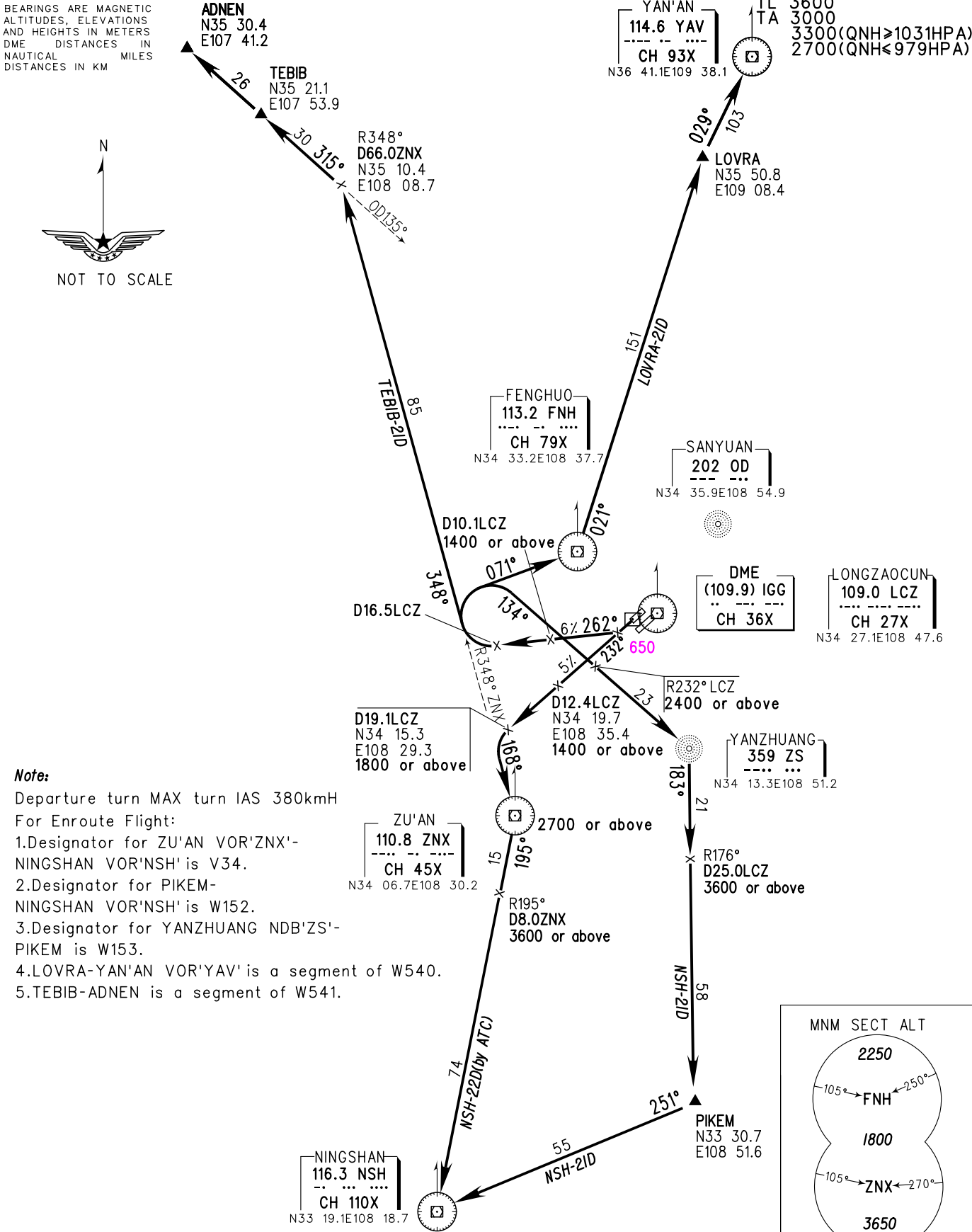
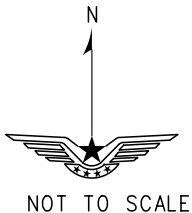
ATIS 128.65(DEP)
D-ATIS 131.45
AP01/04 125.1(126.55)
AP02 119.05(123.85)
AP03 119.6(126.55)
TWR(N) 124.3(118.15)
TWR(S) 130.45(118.15)

ZLXY XI'AN/Xianyang
RWY23R

STANDARD DEPARTURE
CHART-INSTRUMENT

VAR3° W

BEARINGS ARE MAGNETIC
ALTITUDES, ELEVATIONS
AND HEIGHTS IN METERS
DME DISTANCES IN
NAUTICAL MILES
DISTANCES IN KM



Changes: Fix point altitude.