

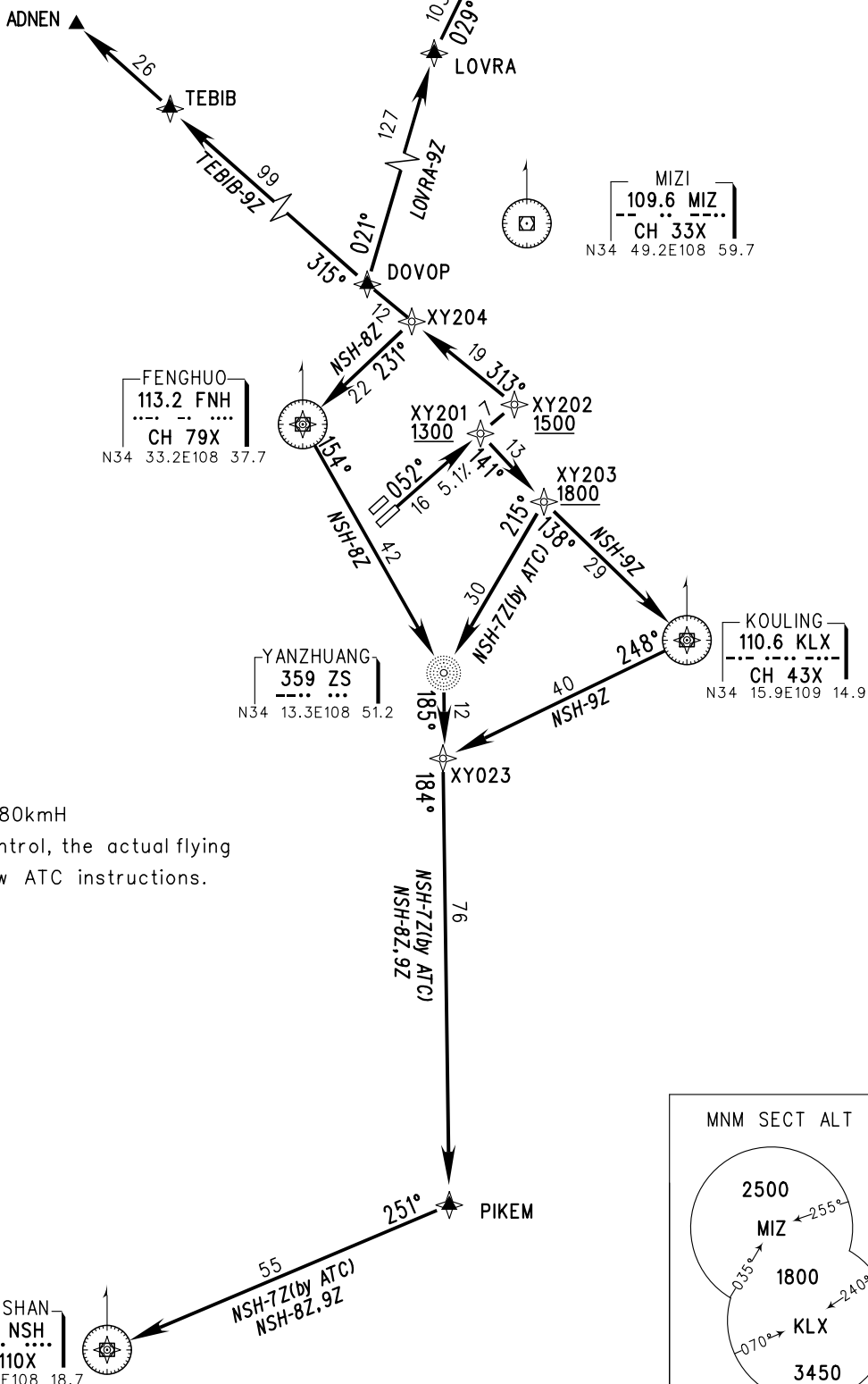
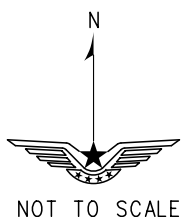
STANDARD DEPARTURE CHART-INSTRUMENT

VAR3° W

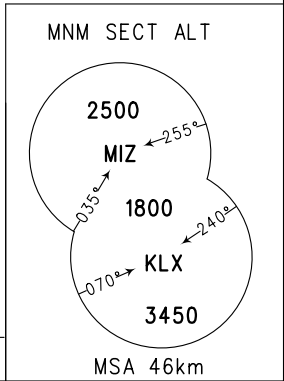
ZLXY XI'AN/Xiayang
RNAV RWY05R

ATIS 128.65
D-ATIS 131.45
AP01/04 125.1(126.55)
AP02 119.05(123.85)
AP03 119.6(126.55)
TWR(N) 124.3(118.15)
TWR(S) 130.45(118.15)

TL 3600 TA 3000 3300(QNH≥1031HPA) 2700(QNH<979HPA)	1. RADAR REQUIRED 2. RNAV 1 3. GNSS,DME/DME/IRU REQUIRED	BEARINGS ARE MAGNETIC ALTITUDES, ELEVATIONS AND HEIGHTS IN METERS DME DISTANCES IN NAUTICAL MILES DISTANCES IN KM
---	--	--



Note:
 1. MAX turn IAS 380kmH
 2. Under radar control, the actual flying altitude shall follow ATC instructions.



Changes: