

# STANDARD DEPARTURE CHART-INSTRUMENT

VAR3° W

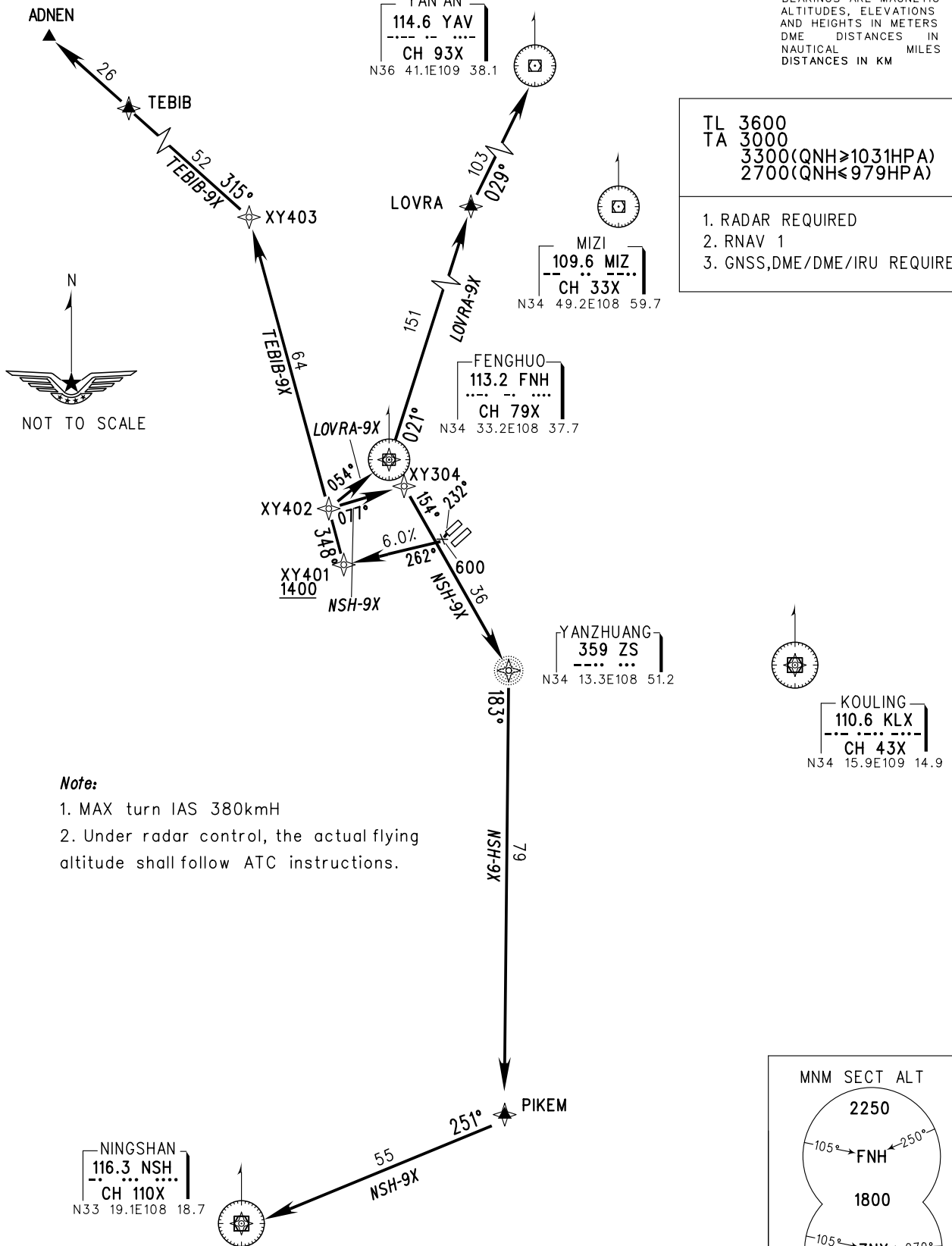
ATIS 128.65  
D-ATIS 131.45  
AP01/04 125.1(126.55)  
AP02 119.05(123.85)  
AP03 119.6(126.55)  
TWR(N) 124.3(118.15)  
TWR(S) 130.45(118.15)

**ZLXY XI'AN/Xianyang**  
RNAV RWY23R

BEARINGS ARE MAGNETIC  
ALTITUDES, ELEVATIONS  
AND HEIGHTS IN METERS  
DME DISTANCES IN  
NAUTICAL MILES  
DISTANCES IN KM

TL 3600  
TA 3000  
3300(QNH≥1031HPA)  
2700(QNH≤979HPA)

1. RADAR REQUIRED
2. RNAV 1
3. GNSS,DME/DME/IRU REQUIRED



**Note:**

1. MAX turn IAS 380kmH
2. Under radar control, the actual flying altitude shall follow ATC instructions.

Changes: Altitude limitation '1300m' after departure withdrawn.