

STANDARD ARRIVAL CHART-INSTRUMENT

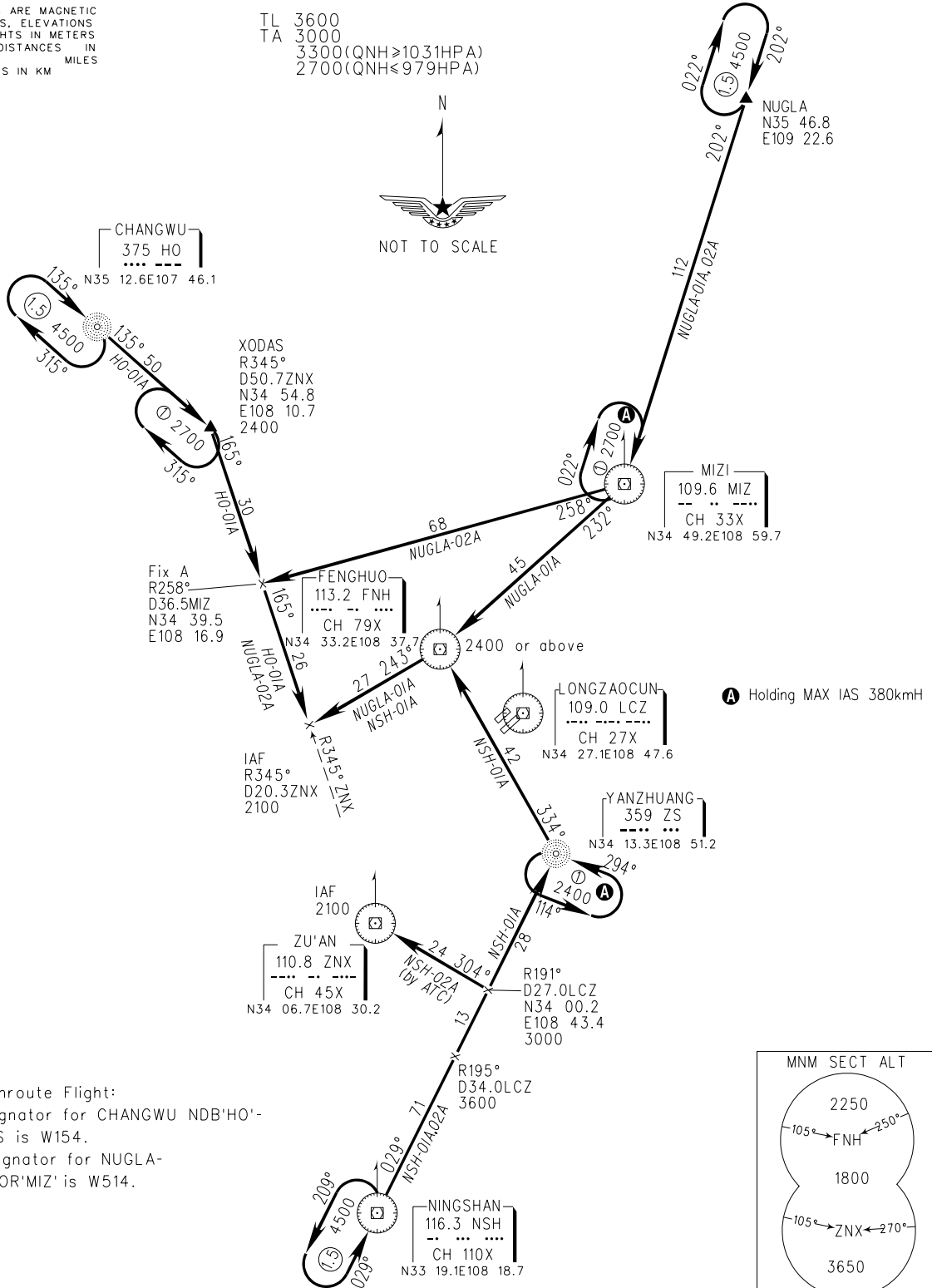
VAR3° W

ATIS 127.45
 D-ATIS 131.45
 AP01/04 125.1(126.55)
 AP02 119.05(123.85)
 AP03 119.6(126.55)
 TWR 124.3(118.15)(N)
 130.45(118.15)(S)

ZLXY XI'AN/Xianyang
 RWY05L/R

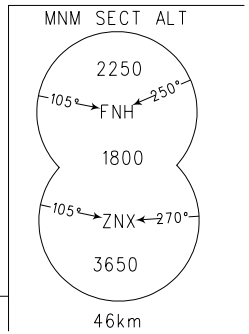
BEARINGS ARE MAGNETIC
 ALTITUDES, ELEVATIONS
 AND HEIGHTS IN METERS
 DME DISTANCES IN
 NAUTICAL MILES
 DISTANCES IN KM

TL 3600
 TA 3000
 3300(QNH≥1031HPA)
 2700(QNH≤979HPA)



A Holding MAX IAS 380kmh

Note:
 For Enroute Flight:
 1.Designator for CHANGWU NDB'HO'-
 XODAS is W154.
 2.Designator for NUGLA-
 MIZI VOR'MIZ' is W514.



Changes: New chart.