

# STANDARD ARRIVAL CHART-INSTRUMENT

VAR3°W

ATIS 127.45  
D-ATIS 131.45  
AP01/04 125.1(126.55)  
AP02 119.05(123.85)  
AP03 119.6(126.55)  
TWR 124.3(118.15)(N)  
130.45(118.15)(S)

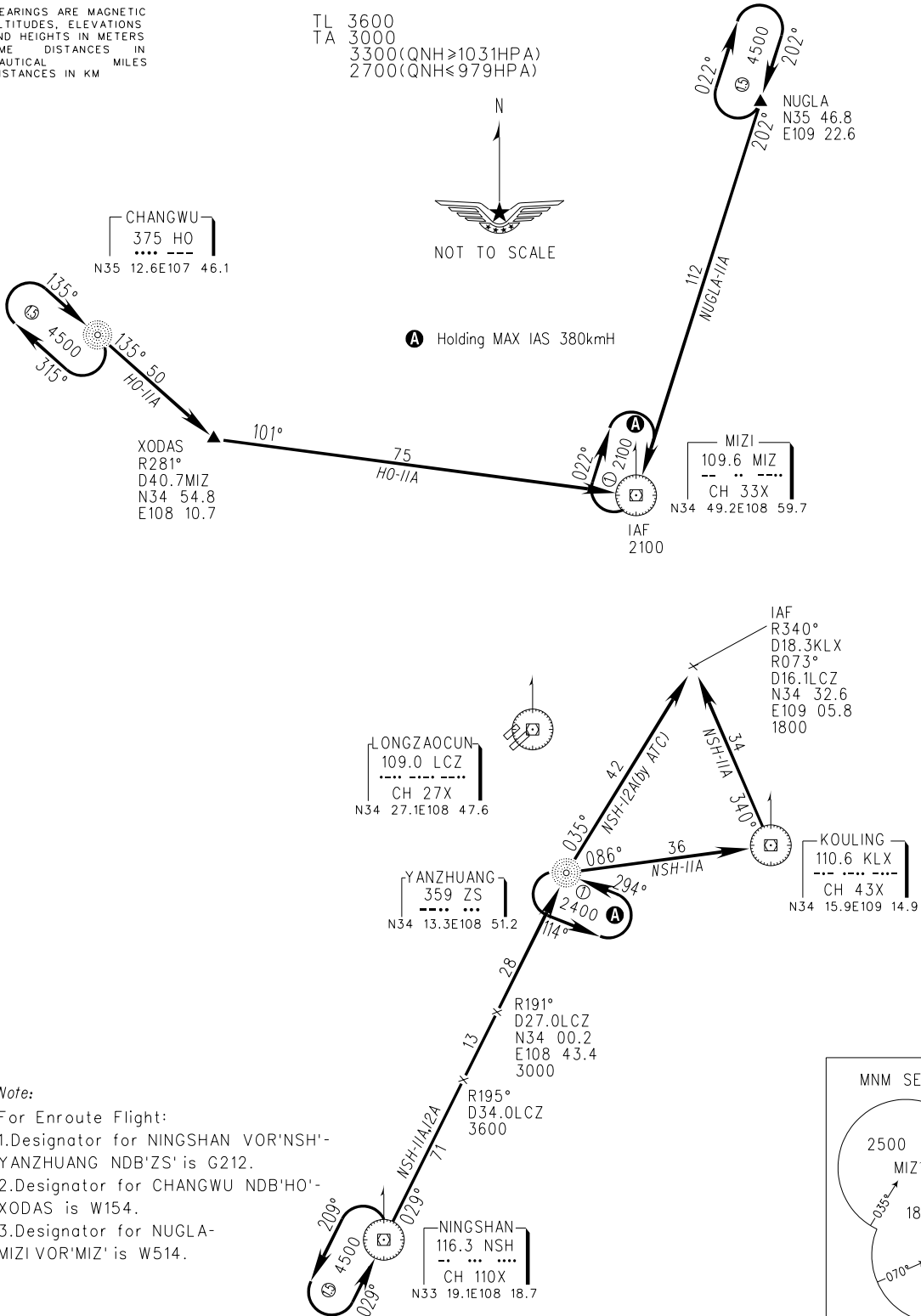
ZLXY XI'AN/Xianyang  
RWY23L/R

BEARINGS ARE MAGNETIC  
ALTITUDES, ELEVATIONS  
AND HEIGHTS IN METERS  
DME DISTANCES IN  
NAUTICAL MILES  
DISTANCES IN KM

TL 3600  
TA 3000  
3300(QNH≥1031HPA)  
2700(QNH≤979HPA)



**A** Holding MAX IAS 380kmH



**Note:**

For Enroute Flight:

- 1.Designator for NINGSHAN VOR'NSH'-YANZHUANG NDB'ZS' is G212.
- 2.Designator for CHANGWU NDB'HO'-XODAS is W154.
- 3.Designator for NUGLA-MIZI VOR'MIZ' is W514.

Changes: New chart.

