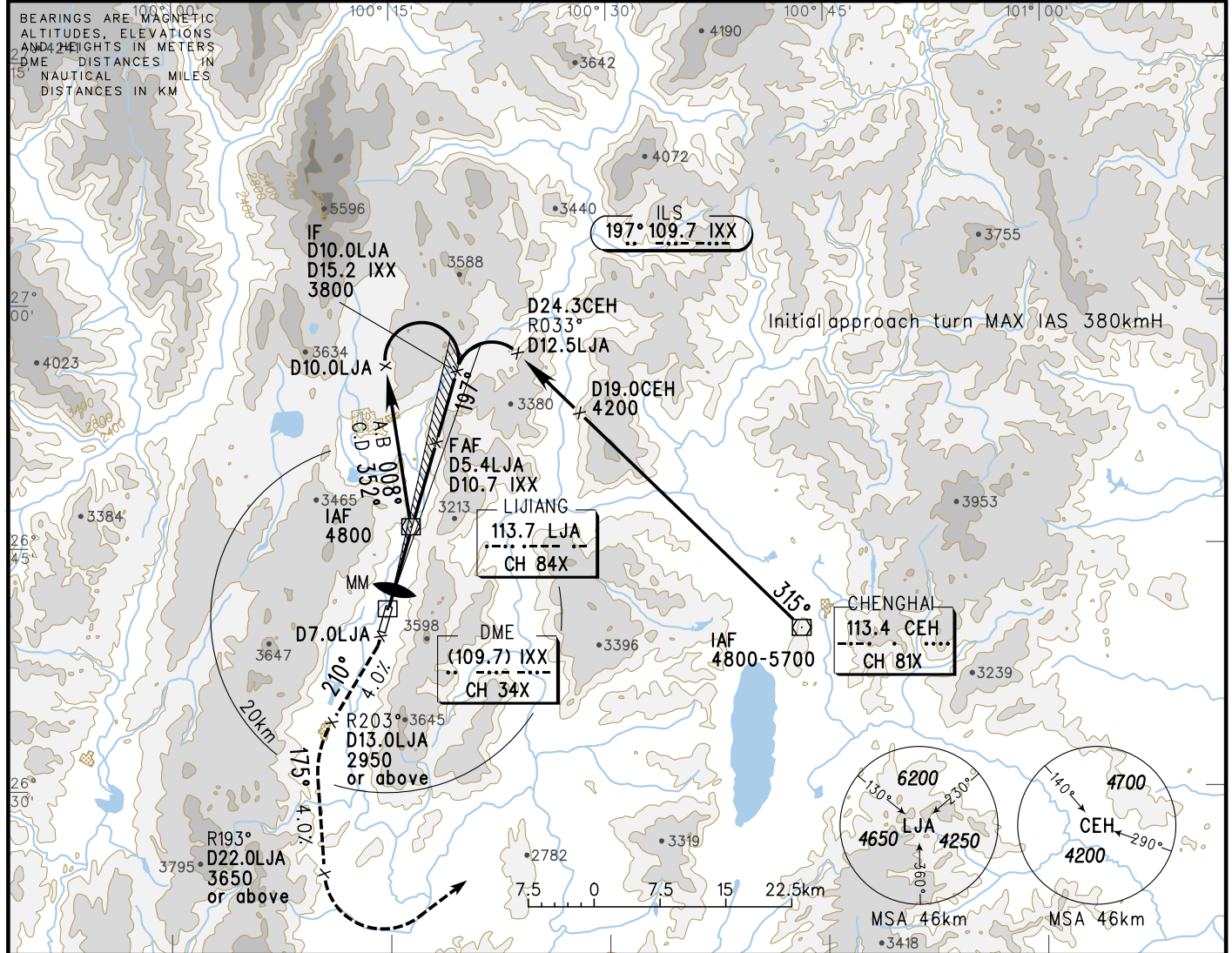


# INSTRUMENT APPROACH CHART-ICAO

VAR1°W

AERODROME ELEV 2243  
 HEIGHTS RELATED TO  
 THR RWY20 ELEV 2243 TWR 118.45(130.0)

ZPLJ LICHANG/Sanyi  
 ILS/DME RWY20



|         |                |      |      |      |      |      |  |  |
|---------|----------------|------|------|------|------|------|--|--|
| GP INOP | DME (IXX) (NM) | 2    | 4    | 6    | 8    | 10   |  |  |
|         | ALT (m)        | 2466 | 2692 | 2918 | 3148 | 3374 |  |  |

**MISSED APPROACH**

Climb straight ahead to D7.0LJA, turn RIGHT to R203°/D13.0LJA at 2950 or above on track 210° with gradient not less than 4.0%, then turn LEFT to R193°/D22.0LJA at 3650 or above on track 175° with gradient not less than 4.0%, then turn LEFT to CEH at 4800 or above, contact ATC.

TL 6600  
 TA 6000  
 6300(QNH 1031HPA)  
 5700(QNH 979HPA)

MAPt GP INOP D3.8LJA D1.4 IXX  
 LJA D5.2 IXX  
 SDF GP INOP D2.6LJA D7.9 IXX  
 SDF GP INOP D4.2LJA D9.5 IXX  
 FAF GP INOP D5.4LJA D10.7 IXX  
 IF D10.0LJA D15.2 IXX

RDH=15  
 MDA 2600  
 GP 3.5°  
 197°  
 3130 3310 3445(1202) 3800(1557)

|                     | A | B                 | C | D | FAF-MAPt(GP INOP) 17.2km |                     |      |      |      |      |      |      |  |
|---------------------|---|-------------------|---|---|--------------------------|---------------------|------|------|------|------|------|------|--|
| ILS/DME DA(H) VIS   |   | 2395(152)<br>1700 |   |   |                          | GS in kt            | 80   | 100  | 120  | 140  | 160  | 180  |  |
|                     |   |                   |   |   |                          | kmH                 | 150  | 185  | 220  | 260  | 295  | 335  |  |
| GP INOP MDA(H) VIS  |   | 2400(157)<br>1700 |   |   |                          | Time min:sec        | 6:57 | 5:34 | 4:38 | 3:58 | 3:28 | 3:05 |  |
| CIRCLING MDA(H) VIS |   |                   |   |   |                          | Rate of descent m/s | 2.5  | 3.1  | 3.8  | 4.4  | 5.0  | 5.6  |  |

Changes: New chart.