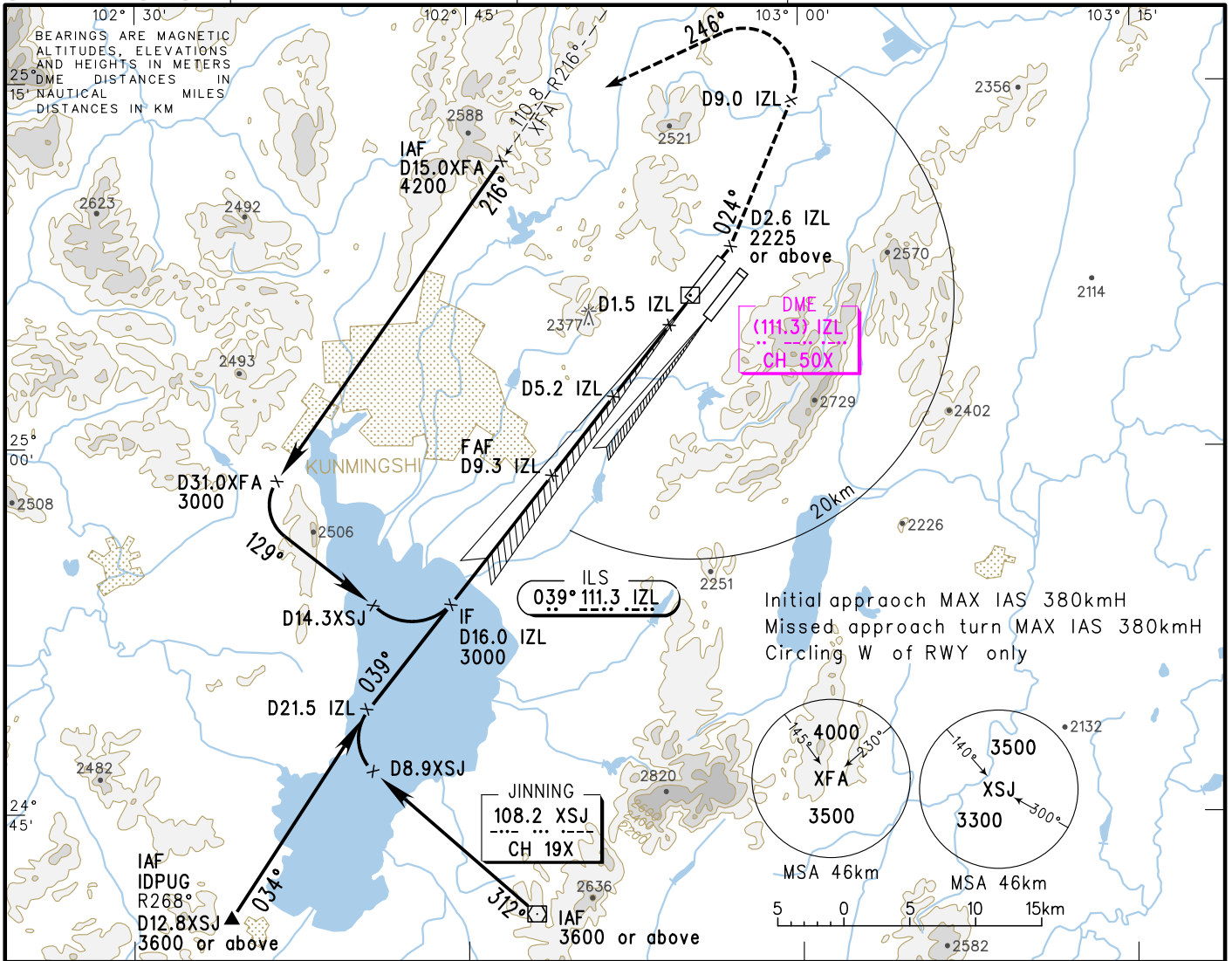


VAR1° W AERODROME ELEV 2104 RWY03 THR ELEV 2101

INSTRUMENT APPROACH CHART-ICAO

| | |
|----------------------|---------------------|
| ATIS 128.45 | AP01 119.0(125.55) |
| D-ATIS 131.45 | AP02 123.8(125.55) |
| TWR(E) 118.1(118.85) | AP03 120.35(127.9) |
| TWR(W) 130.6(118.85) | AP04 121.15(126.55) |
| | AP05 124.25(127.9) |

ZPPP KUNMING/Changshui ILS/DME RWY03



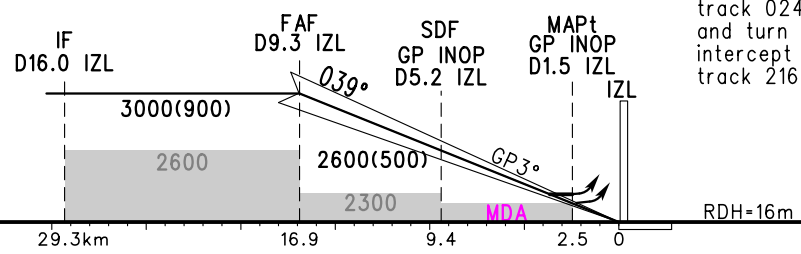
Initial approach MAX IAS 380kmH
Missed approach turn MAX IAS 380kmH
Circling W of RWY only

| GP INOP | DME (IZL) (NM) | 9 | 8 | 7 | 6 | 5 | 4 | 3 | 2 |
|---------|----------------|------|------|------|------|------|------|------|------|
| | ALT (m) | 2974 | 2877 | 2780 | 2683 | 2586 | 2489 | 2392 | 2294 |

TL 6000
TA 5400
5700(QNH>1031HPA)
5100(QNH<979HPA)

MISSED APPROACH

Climb straight ahead to D2.6 IZL, with ALT 2225m or above, then turn LEFT and climb along track 024° to D9.0 IZL, and turn LEFT along track 246° to intercept R216° XFA, then climb along track 216° at 3600, contact ATC.



| | | | | | | | | | | | | |
|--------------------------|-------------------|----------------------|-------------------|-------------------|--------------------------|------|------|------|------|------|------|--|
| | A | B | C | D | FAF-MAPT(GP INOP) 14.4km | | | | | | | |
| ILS/DME DA(H) RVR/VIS | | 2160(60) 550(800) | | | GS in kt | 80 | 100 | 120 | 140 | 160 | 180 | |
| | | | | | kmH | 150 | 185 | 220 | 260 | 295 | 335 | |
| GP INOP MDA(H) VIS | | 2230(130) 1600 | | | Time min:sec | 5:50 | 4:40 | 3:53 | 3:20 | 2:55 | 2:36 | |
| | | | | | Rate of descent m/s | 2.2 | 2.7 | 3.2 | 3.8 | 4.3 | 4.9 | |
| CIRCLING MDA(H) VIS | 2350(247) 1800 | 2470(367) 3000 | 2500(397) 4400 | 2500(397) 5000 | Changes: Landing minma. | | | | | | | |