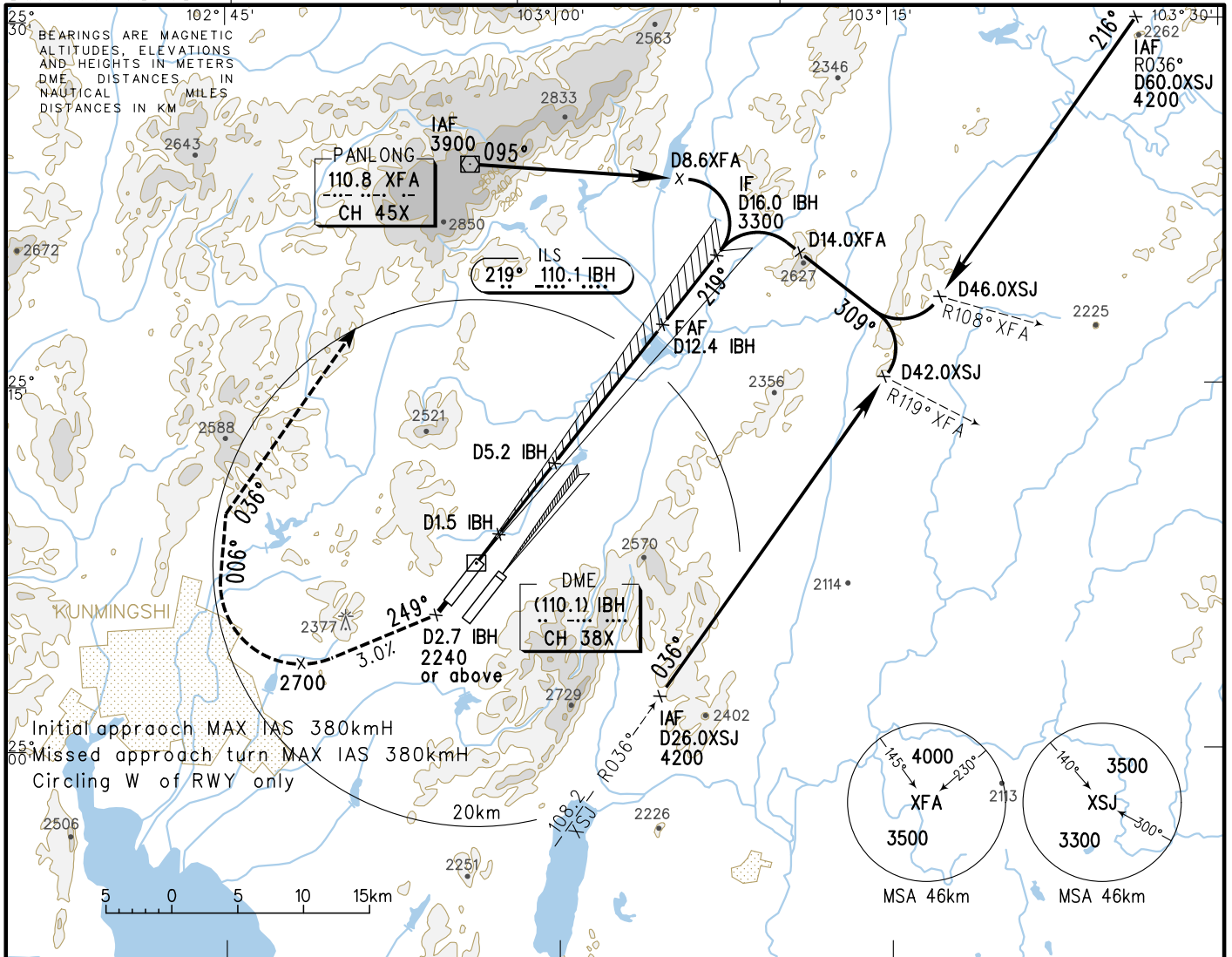


VAR1°W AERODROME ELEV 2104 RWY21 THR ELEV 2098

INSTRUMENT APPROACH CHART-ICAO

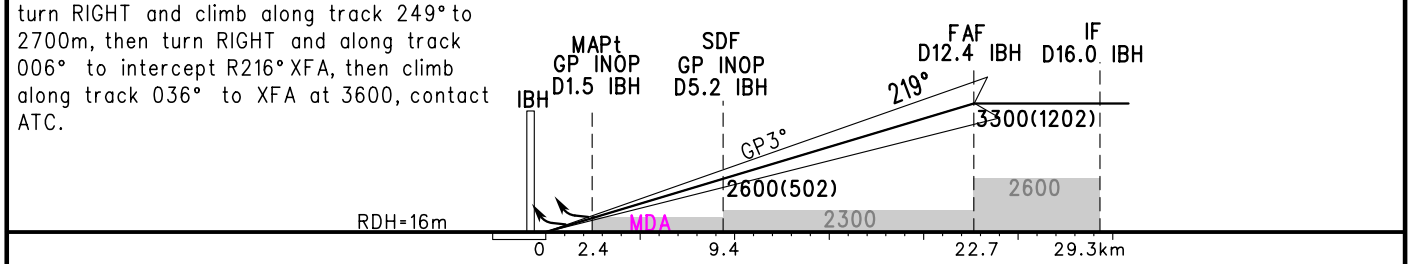
ATIS 128.45	AP01 119.0(125.55)
D-ATIS 131.45	AP02 123.8(125.55)
TWR(E) 118.1(118.85)	AP03 124.25(127.9)
TWR(W) 130.6(118.85)	AP04 121.15(126.55)
	AP05 120.35(127.9)

ZPPP KUNMING/Changshui ILS/DME RWY21



GP INOP	DME (IBH) (NM)	2	4	6	8	10	12
	ALT (m)	2292	2487	2681	2875	3069	3263

MISSED APPROACH
 Climb straight ahead (with gradient $\geq 3\%$) to D2.7 IBH with ALT 2240m or above, turn RIGHT and climb along track 249° to 2700m, then turn RIGHT and along track 006° to intercept R216° XFA, then climb along track 036° to XFA at 3600, contact ATC.
 TL 6000
 TA 5400
 5700(QNH ≥ 1031 HPA)
 5100(QNH ≤ 979 HPA)



ILS/DME	DA(H) RVR/VIS	FAF-MAPt(GP INOP) 20.3km			
		A	B	C	D
		2158(60) 550(800)			
		2235(137) 1800			
		2350(247) 1800	2470(367) 3000	2500(397) 4400	2500(397) 5000

GS in kt	80	100	120	140	160	180
kmH	150	185	220	260	295	335
Time min:sec	8:13	6:35	5:29	4:42	4:07	3:39
Rate of descent m/s	2.2	2.7	3.2	3.8	4.3	4.9

Changes: Landing minma.