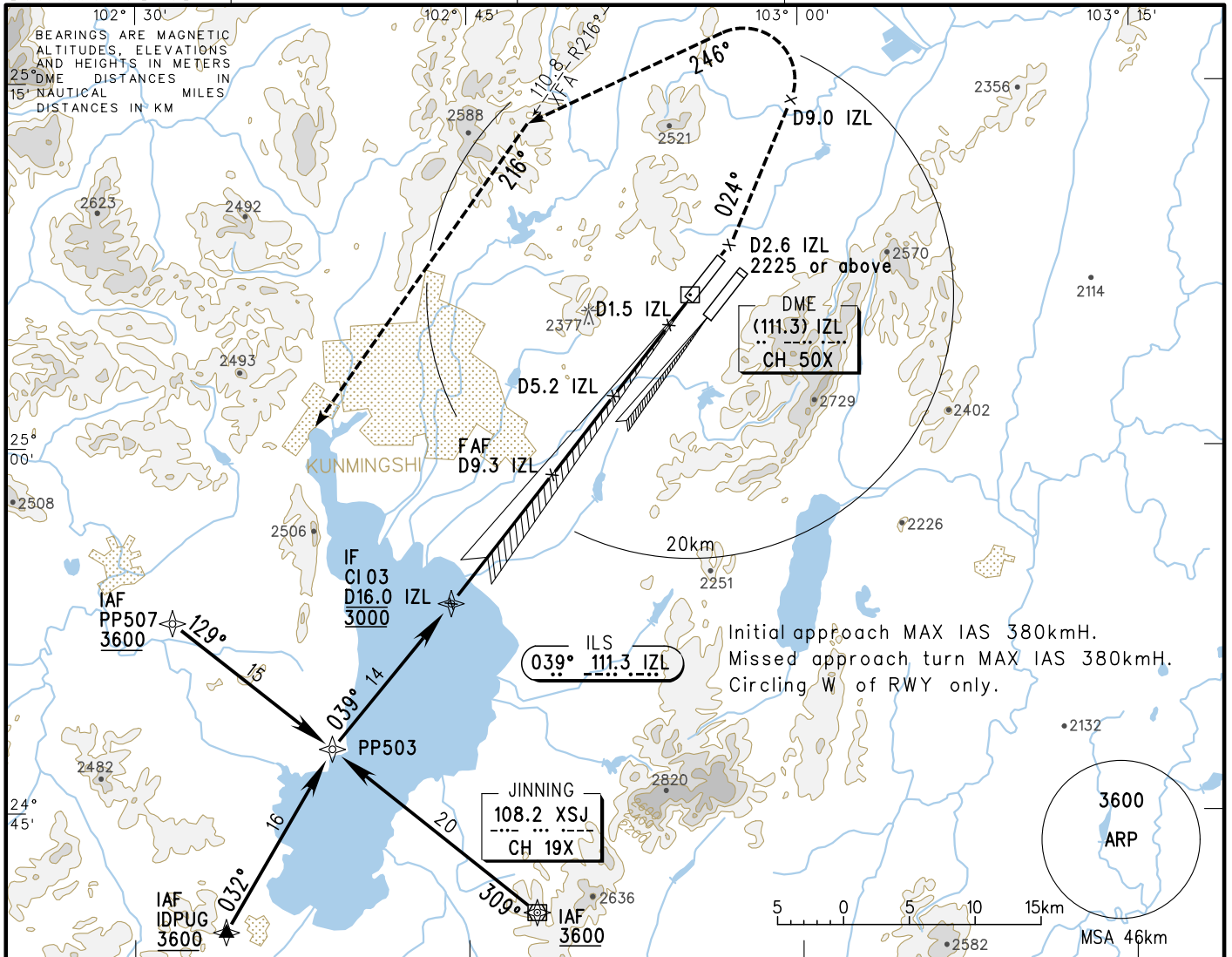


VAR1°W AERODROME ELEV 2104 RWY03 THR ELEV 2101

INSTRUMENT APPROACH CHART-ICAO

ATIS 128.45	AP01 119.0(125.55)
D-ATIS 131.45	AP02 123.8(125.55)
TWR(E) 118.1(118.85)	AP03 120.35(127.9)
TWR(W) 130.6(118.85)	AP04 121.15(126.55)
	AP05 124.25(127.9)

ZPPP KUNMING/Changshui
RNAV ILS/DME RWY03

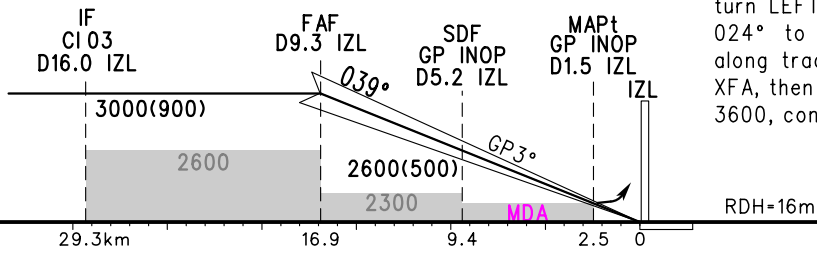


Initial approach MAX IAS 380kmh.
Missed approach turn MAX IAS 380kmh.
Circling W of RWY only.

GP INOP	DME (IZL) (NM)	9	8	7	6	5	4	3	2
	ALT (m)	2974	2877	2780	2683	2586	2489	2392	2294

TL 6000
TA 5400
5700(QNH≥1031HPA)
5100(QNH≤979HPA)

MISSED APPROACH
Climb straight ahead to D2.6 IZL, with ALT 2225m or above, then turn LEFT and climb along track 024° to D9.0 IZL, and turn LEFT along track 246° to intercept R216° XFA, then climb along track 216° to 3600, contact ATC.



ILS/DME	DA(H) RVR/VIS	FAF-MAPt(GP INOP) 14.4km			
		A	B	C	D
		2160(60) 550(800)			
GP INOP	MDA(H) VIS	2230(130) 1600			
CIRCLING	MDA(H) VIS	2350(247) 1800	2470(367) 3000	2500(397) 4400	2500(397) 5000

GS in kt	80	100	120	140	160	180
kmH	150	185	220	260	295	335
Time min:sec	5:50	4:40	3:53	3:20	2:55	2:36
Rate of descent m/s	2.2	2.7	3.2	3.8	4.3	4.9

Changes: Chart number, landing minima.