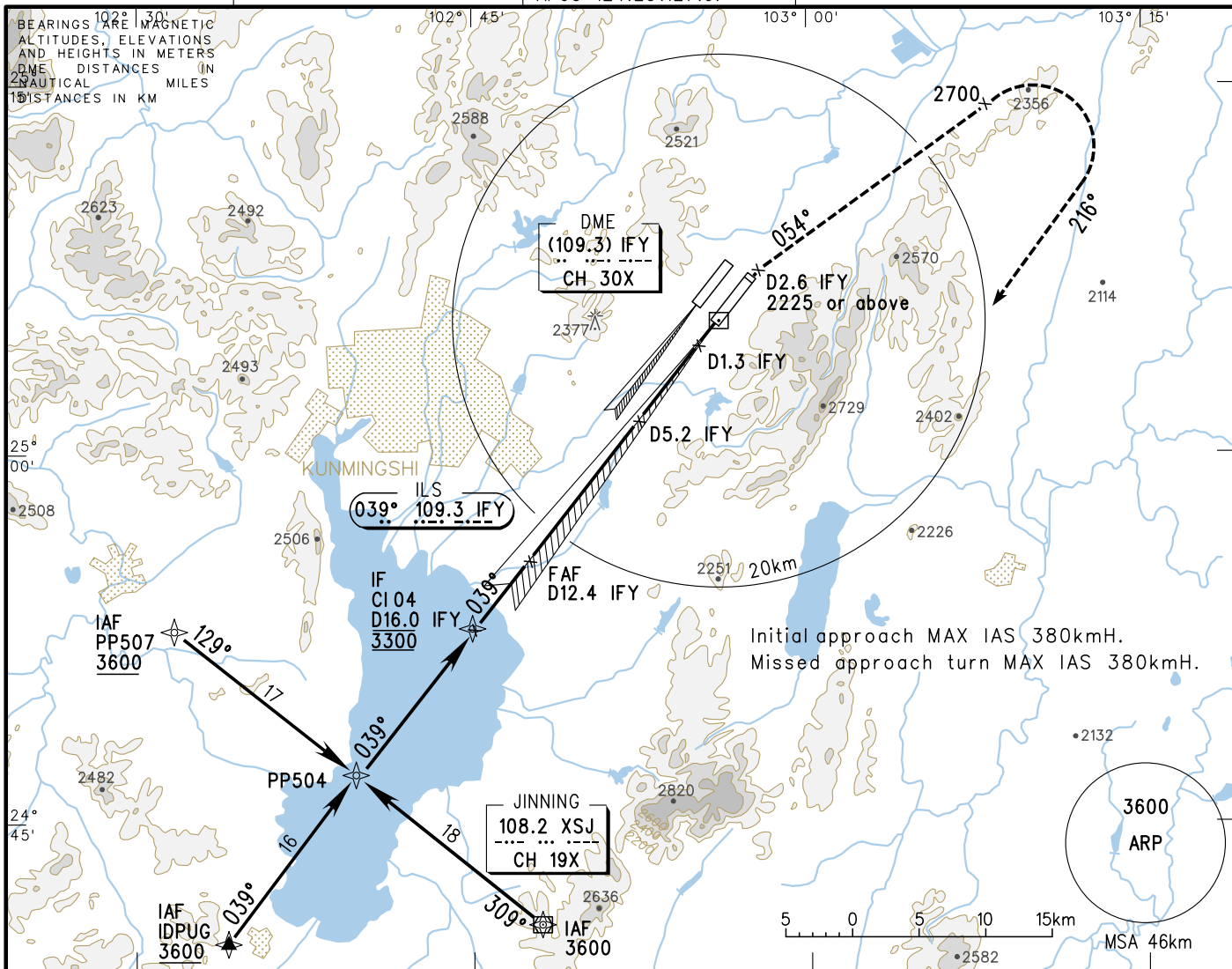


VAR1°W AERODROME ELEV 2104 RWY04 THR ELEV 2099

# INSTRUMENT APPROACH CHART-ICAO

ATIS 128.45	AP01 119.0(125.55)
D-ATIS 131.45	AP02 123.8(125.55)
TWR(E) 118.1(118.85)	AP03 120.35(127.9)
TWR(W) 130.6(118.85)	AP04 121.15(126.55)
	AP05 124.25(127.9)

## ZPPP KUNMING/Changshui RNAV ILS/DME RWY04



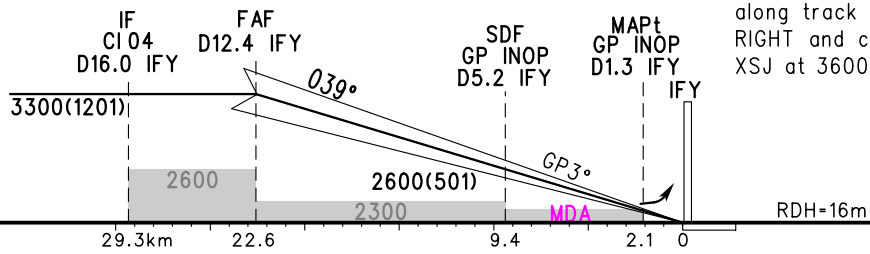
Initial approach MAX IAS 380kmH.  
Missed approach turn MAX IAS 380kmH.

GP INOP	DME (IFY) (NM)	12	10	8	6	4	2		
	ALT (m)	3263	3069	2875	2681	2487	2292		

TL 6000  
TA 5400  
5700(QNH≥1031HPA)  
5100(QNH≤979HPA)

### MISSED APPROACH

Climb straight ahead to D2.6 IFY, with ALT 2225m or above, turn RIGHT along track 054° to 2700m, then turn RIGHT and climb along track 216° to XSJ at 3600, contact ATC.



	A	B	C	D	FAF-MAPt(GP INOP) 20.5km						
	ILS/DME DA(H) RVR/VIS		2159(60) 550(800)			GS in kt	80	100	120	140	160
GP INOP MDA(H) VIS		2225(126) 1600			kmH	150	185	220	260	295	335
CIRCLING MDA(H) VIS					Time min:sec	8:15	6:39	5:35	4:44	4:10	3:40
					Rate of descent m/s	2.2	2.7	3.2	3.8	4.3	4.9

Changes: Landing minima.