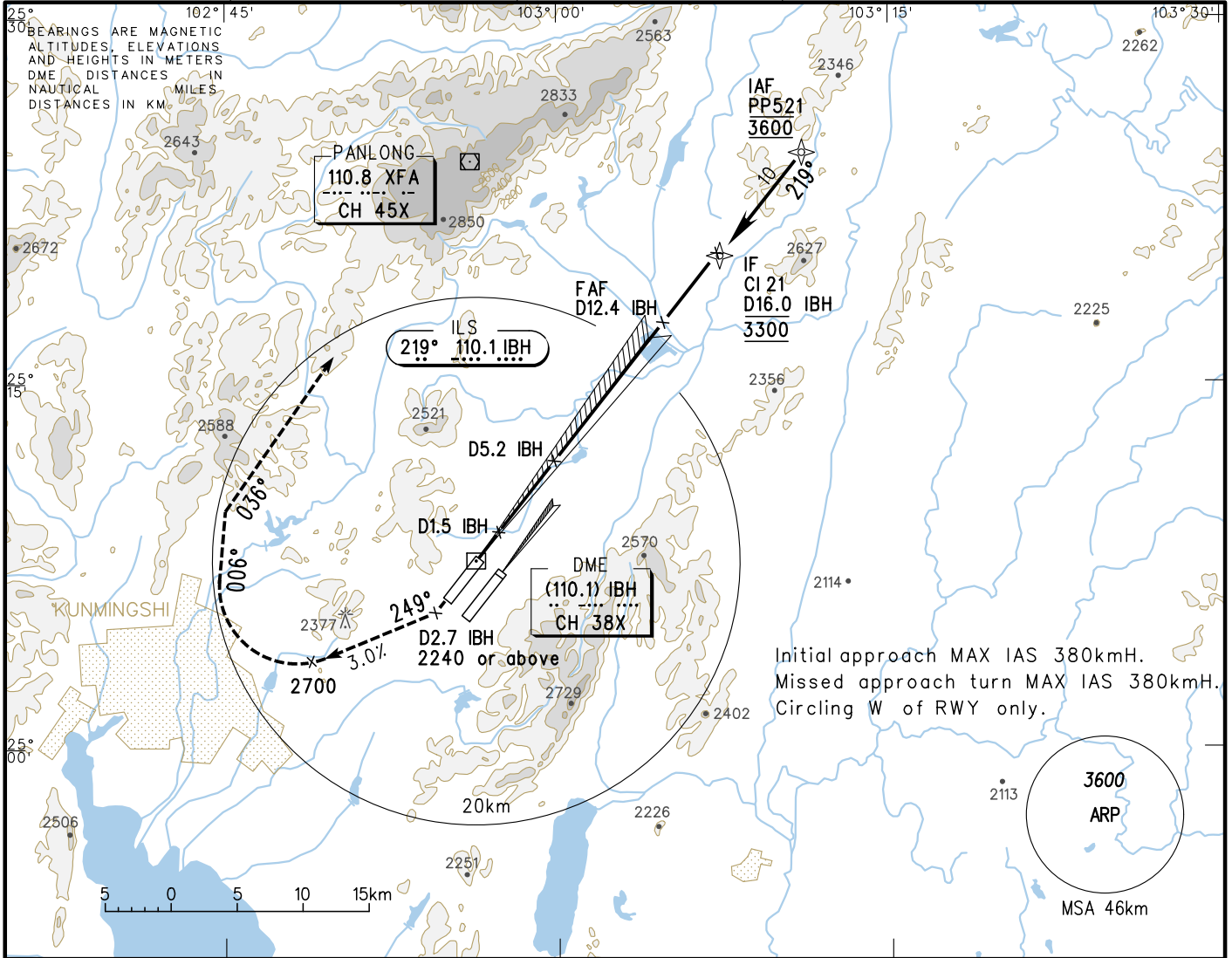


VAR1° W AERODROME ELEV 2104 RWY21 THR ELEV 2098

# INSTRUMENT APPROACH CHART-ICAO

ATIS 128.45	AP01 119.0(125.55)
D-ATIS 131.45	AP02 123.8(125.55)
TWR(E) 118.1(118.85)	AP03 124.25(127.9)
TWR(W) 130.6(118.85)	AP04 121.15(126.55)
	AP05 120.35(127.9)

## ZPPP KUNMING/Changshui RNAV ILS/DME RWY21



GP INOP	DME (IBH) (NM)	2	4	6	8	10	12	14	16
	ALT (m)	2292	2487	2681	2875	3069	3263		

**MISSED APPROACH**

Climb straight ahead (with gradient  $\geq 3\%$ ) to D2.7 IBH with ALT 2240m or above, turn RIGHT and climb along track 249° to 2700m, then turn RIGHT and along track 006° to intercept R216° XFA, then climb along track 036° to XFA at 3600, contact ATC.

TL 6000  
TA 5400  
5700(QNH  $\geq 1031$ HPA)  
5100(QNH  $\leq 979$ HPA)

	A	B	C	D	FAF-MAPt(GP INOP) 20.3km								
					GS in kt	80	100	120	140	160	180		
ILS/DME DA(H) RVR/VIS			2158(60) 550(800)										
GP INOP MDA(H) VIS			2235(137) 1800										
CIRCLING MDA(H) VIS	2350(247) 1800	2470(367) 3000	2500(397) 4400	2500(397) 5000									
					Time min:sec	8:13	6:35	5:29	4:42	4:07	3:39		
					Rate of descent m/s	2.2	2.7	3.2	3.8	4.3	4.9		

Changes: Landing minma.