

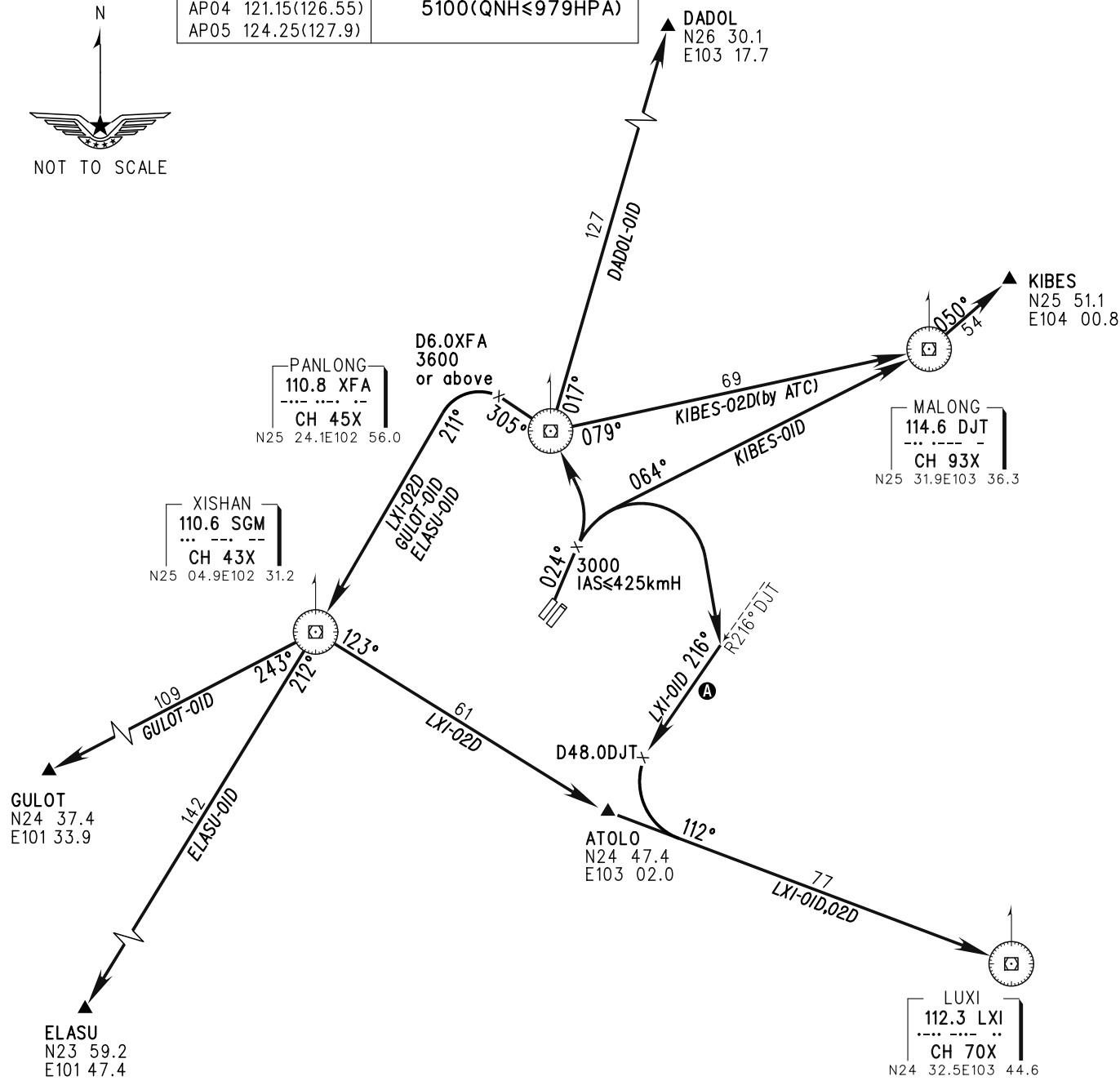
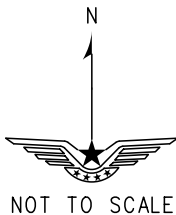
STANDARD DEPARTURE CHART-INSTRUMENT

ZPPP KUNMING/Changshui RWY03

VAR1° W

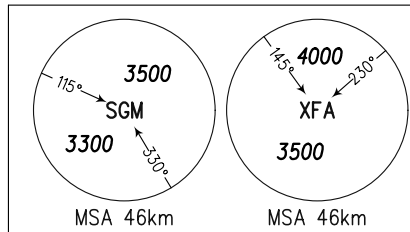
BEARINGS ARE MAGNETIC
ALTITUDES, ELEVATIONS
AND HEIGHTS IN METERS
DME DISTANCES IN
NAUTICAL MILES
DISTANCES IN KM

ATIS 128.45 D-ATIS 131.45	TWR(E) 118.1(118.85) TWR(W) 130.6(118.85)
AP01 119.0(125.55) AP02 123.8(125.55) AP03 120.35(127.9) AP04 121.15(126.55) AP05 124.25(127.9)	TL 6000 TA 5400 5700(QNH>1031HPA) 5100(QNH<=979HPA)



Note:

1. Ⓐ Deviation to east of R216° DJT is forbidden.
2. While simultaneous operation implemented, turn RIGHT after take-off shall be permitted by ATC.
3. Under radar control service, actual flight ALT instructed by ATC.



Changes: Procedure.