

STANDARD DEPARTURE CHART-INSTRUMENT

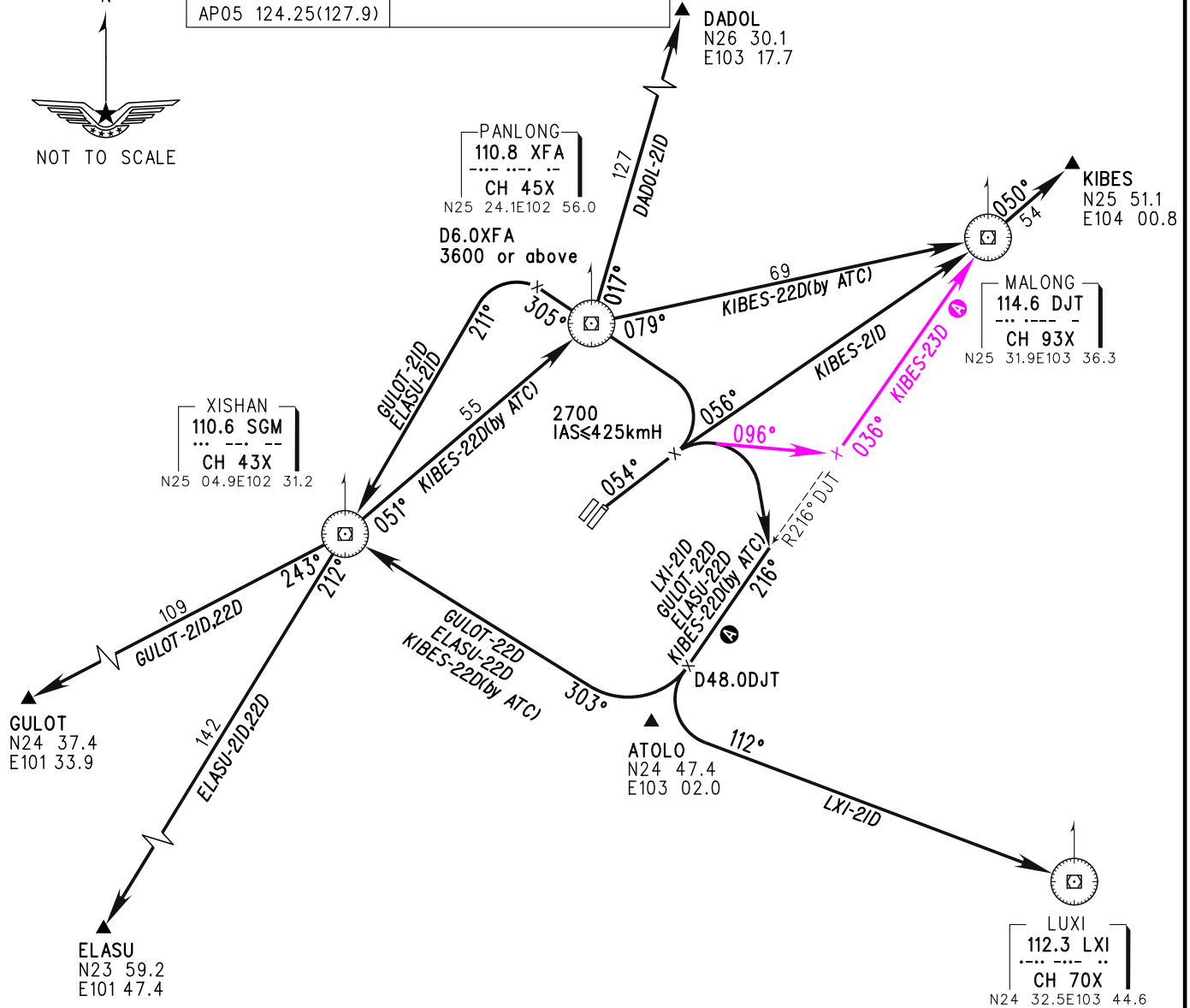
ZPPP KUNMING/Changshui
RWY04

VAR1° W

BEARINGS ARE MAGNETIC
ALTITUDES, ELEVATIONS
AND HEIGHTS IN METERS
DME DISTANCES IN
NAUTICAL MILES
DISTANCES IN KM

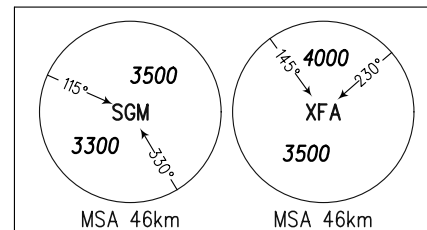
ATIS 128.45	TWR(E) 118.1(118.85)
D-ATIS 131.45	TWR(W) 130.6(118.85)
AP01 119.0(125.55)	TL 6000
AP02 123.8(125.55)	TA 5400
AP03 120.35(127.9)	5700(QNH>1031HPA)
AP04 121.15(126.55)	5100(QNH<=979HPA)
AP05 124.25(127.9)	

TL 6000
TA 5400
5700(QNH>1031HPA)
5100(QNH<=979HPA)



Note:

1. ⓐ Deviation to east of R216° DJT is forbidden.
2. While simultaneous operation implemented, turn LEFT after take-off shall be permitted by ATC.
3. Under radar control service, actual flight ALT instructed by ATC.



Changes: Procedure.